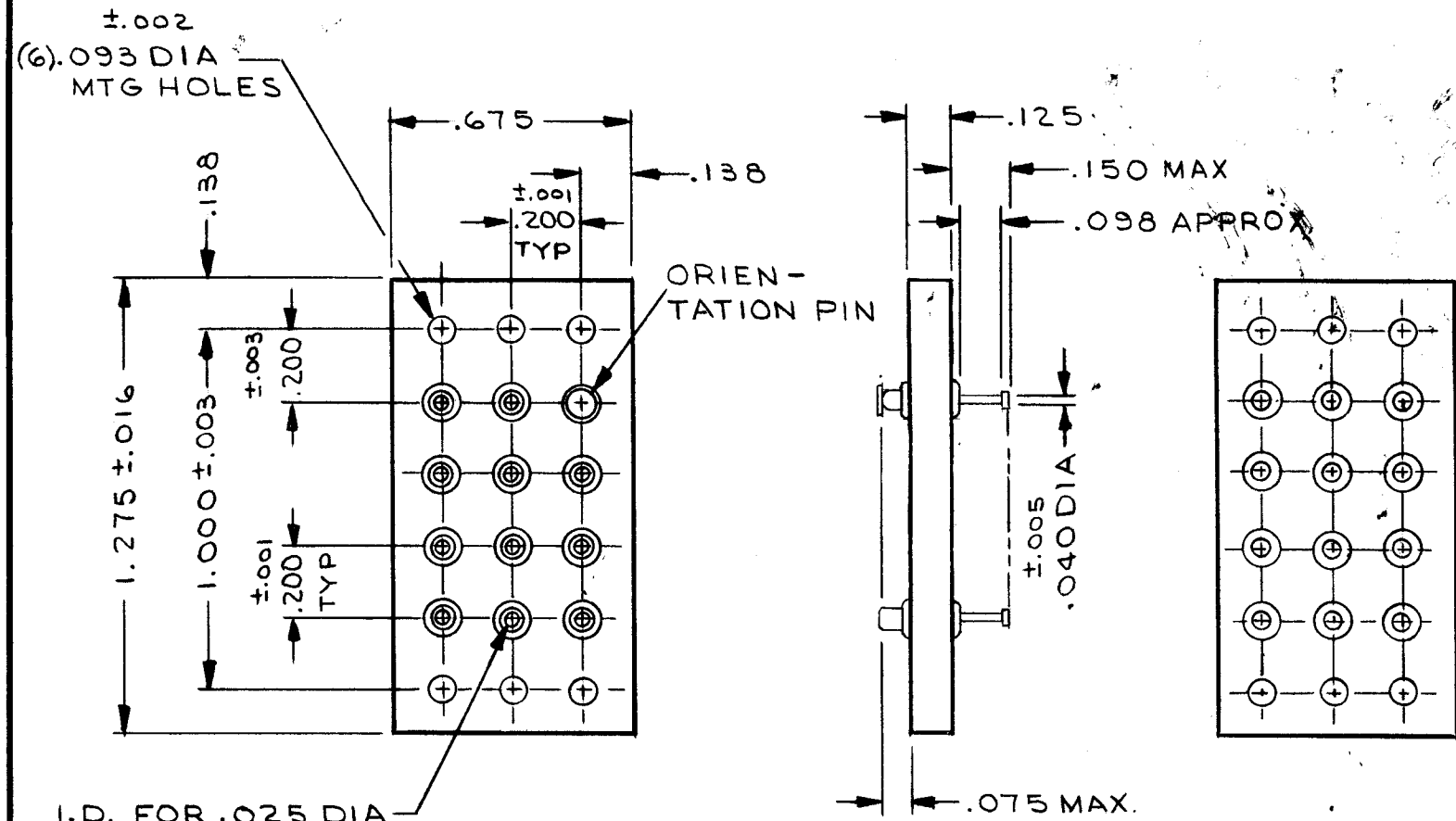


STANDARD DRAWING

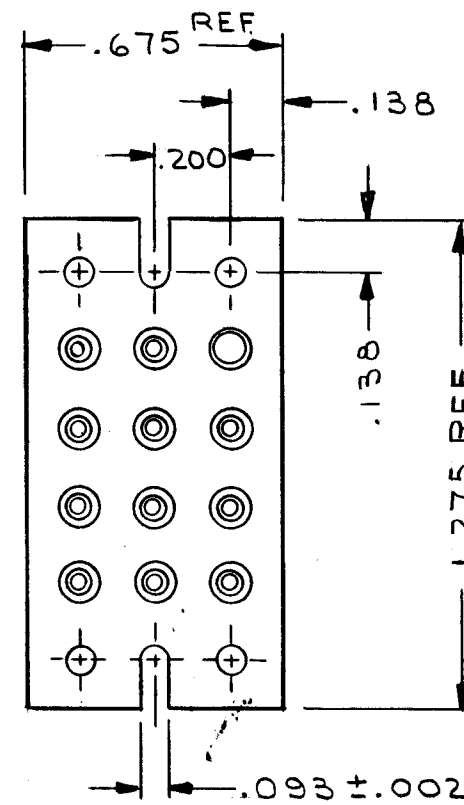
TMC PART NO.	MFG PART NO.
TS180-1	3740-1-03
TS180-2	3740-1-03 MODIFIED

TS180

REVISIONS						
SYM	DESCRIPTION	DATE	E.M.N. NO.	DRAFT	CHKD	APPD
Ø	RELEASER	8-24-65	Ø	G.D.L.		



TS180-1



TS180-2

IDENTICAL TO TS180-1 EXCEPT FOR TWO (2) CENTER .093 WIDE MTG SLOTS.

SPECIFICATIONS

MATERIAL & FINISH

BOARD: PHENOLIC XXXP

JACKS: BODIES - BRASS

SPRINGS - BERYLLIUM COPPER
(HEAT TREATED)

ORIENTATION PIN: BRASS

.000020 HARD GOLD
PLATE OVER SILVER
PLATE .0002

RTPD		
Q'TY./UNIT	MODEL USED ON	ASS'Y. NO.
SCALE 2/1	CODE	3401-167

NOTES

THE CONTENTS OF THIS DRAWING ARE THE EXCLUSIVE PROPERTY OF THE TECHNICAL MATERIEL CORP. ITS UNAUTHORIZED USE OR REPRODUCTION IN WHOLE OR IN PART IS STRICTLY FORBIDDEN.

REQ'D.	ITEM	PART NUMBER	DESCRIPTION	SYMBOL
LIST OF MATERIAL				
MATERIAL		SEE SPECS	THE TECHNICAL MATERIEL CORP. MAMARONECK, NEW YORK	
FINISH		SEE SPECS	TITLE SOCKET, MODULE	
UNLESS OTHERWISE SPECIFIED DIMENSIONS ARE IN INCHES AND INCLUDE CHEMICALLY APPLIED OR PLATED FINISHES		DRAWN J. LESHINSKI	DATE 8/10/65	FINAL APPROVAL <i>[Signature]</i>
DECIMALS .X ± .05 .XX ± .01 .XXX ± .005		TOLERANCES		DATE 8/23/65
FRACTIONS ± 1/64 ANGLES ± 0° 30'		ELECT. DES.		DATE 8/23/65
		MECH. DES.		DATE 8/23/65
			TS180	
			SHEET	
			REV. LTR.	