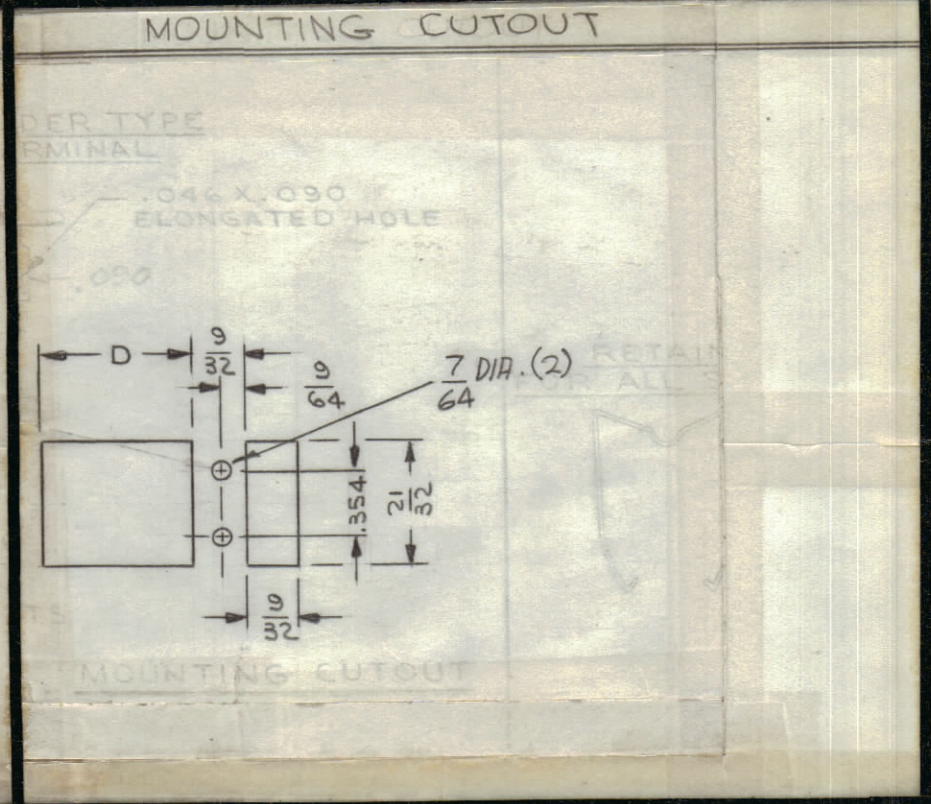
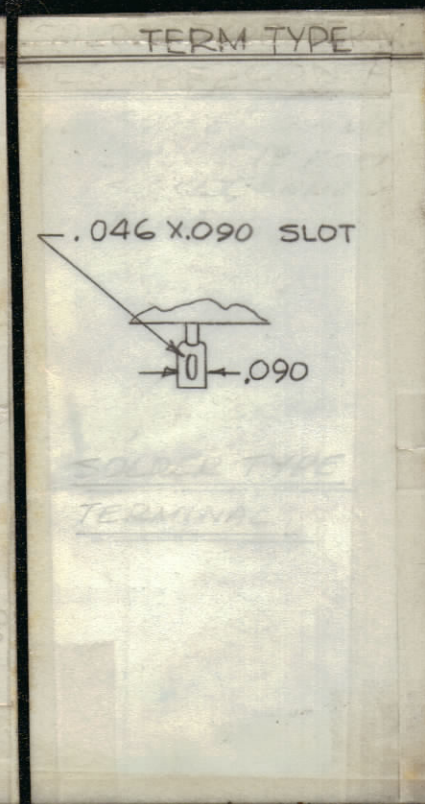
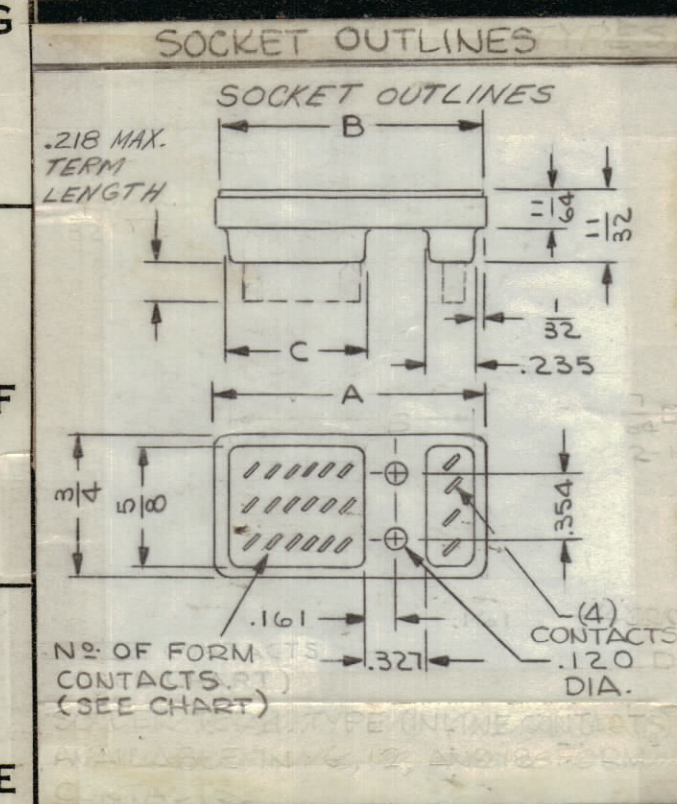
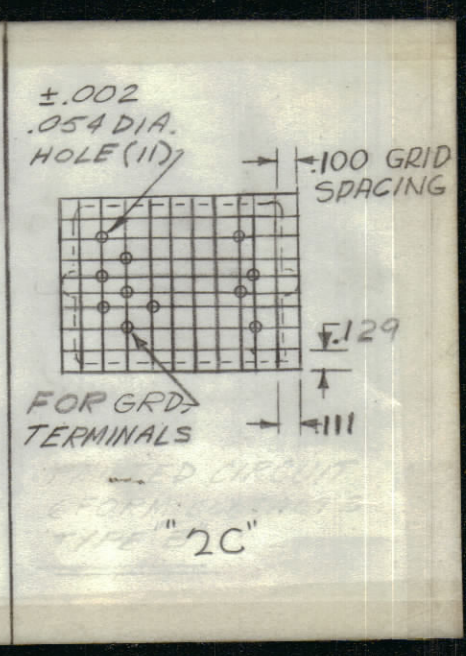
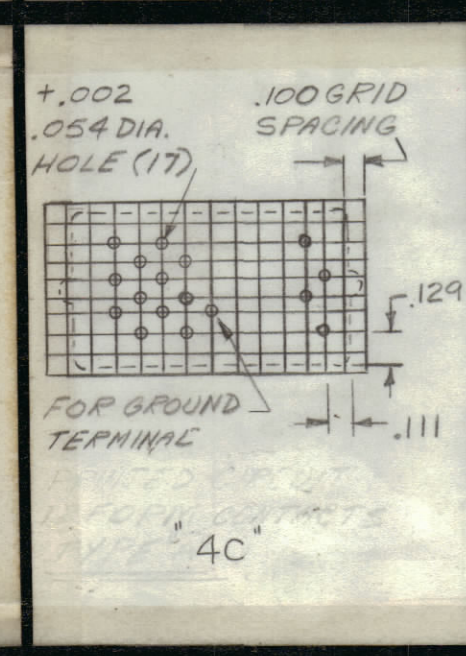
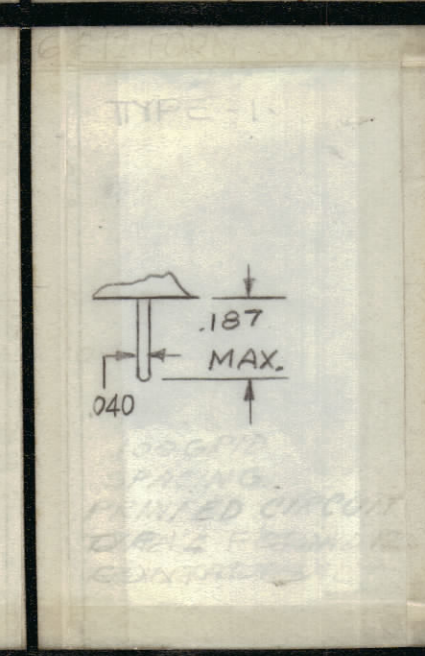
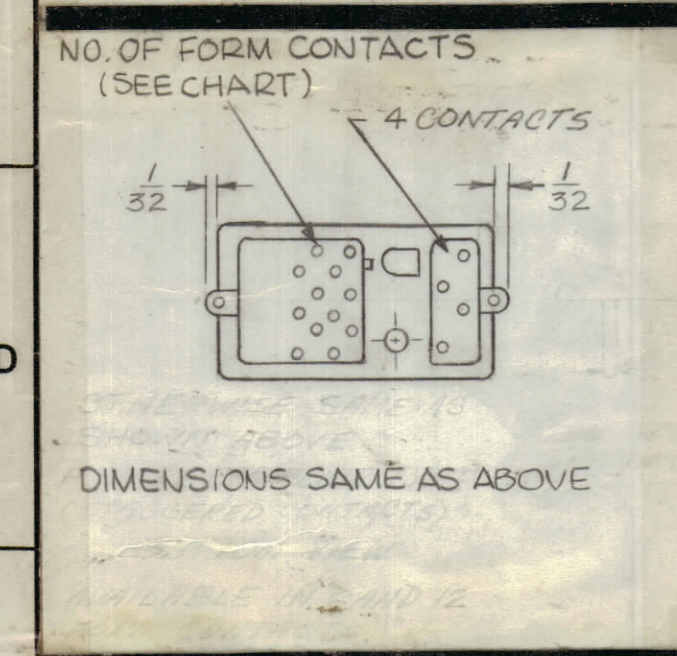


TMC PART NUMBER	MFG. PART NUMBER	DIMENSIONS				NO. OF FORM CONTACTS	SOCKET TYPE
		A	B	C	D		
TS171-1	30055-1	3/32	59/64	.296	11/32	6	SOLDER TERMINAL
TS171-2	30055-20	1 13/32	1 23/64	.730	25/32	18	SOLDER TERMINAL
TS171-3	30055-2	1 13/64	1 9/64	.513	9/16	12	SOLDER TERMINAL
TS171-4	30055-4	1 13/64	1 9/64	.513		12	PRINTED CIRCUIT
TS171-5	30055-3	3/32	59/64	.296		6	PRINTED CIRCUIT
TS171-6	30055-24	1 13/32	1 23/64	.730		18	PRINTED CIRCUIT

REVISIONS						
ZONE	SYM	DESCRIPTION	DATE	E.M.N. NO.	DRAFT	CHKD
#	C	COMPLETELY REVISED WAS 1 SIZE	1/24/65	15506	MVV	996

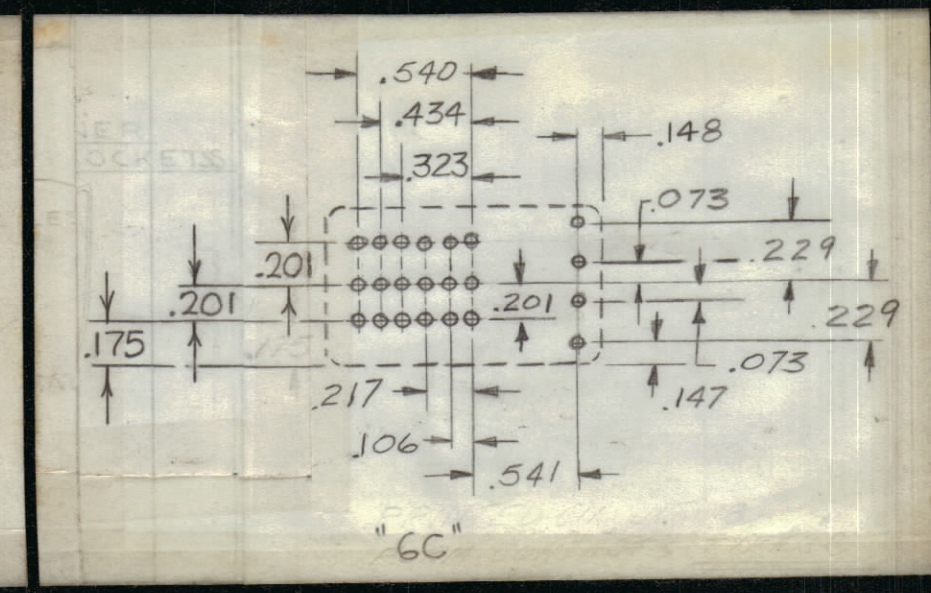


SOCKET TYPE
SOLDER TERM. TYPE.
AVAILABLE IN FORM 2C, 4C, 6C, (6, 12, AND 18 FORM CONTACTS.)



PRINTED CKT TYPE
AVAILABLE IN FORM 2C, 4C, (6 AND 12 FORM CONTACTS)
RETAINER
SEE TMC NO. CUI63 FOR TALL RETAINER USED ON AC RELAYS

OUTLINE IS SAME AS SOLDER TERMINAL SHOWN ABOVE.



PRINTED CKT TYPE
AVAILABLE IN FORM 6C (18 FORM CONTACTS)

NOTES
1. ALL CONTACT MATERIAL BERYLLIUM COPPER GOLD PLATED.
2. SOCKET MATERIAL - BLACK PHENOLIC
3. RECOMMENDED CHASSIS THICKNESS .062
4. SOCKET USED WITH -RL156

Q'TY./UNIT	MODEL USED ON	ASS'Y. NO.
DO NOT SCALE	C	S401-227

REQ'D.	ITEM	PART NUMBER	DESCRIPTION	SYMBOL
GELLMAN LIST OF MATERIAL				
MATERIAL		SEE NOTES		
FINISH		H		
TITLE		THE TECHNICAL MATERIEL CORP. MAMARONECK, NEW YORK		
DRAWN		D.VENEZIAN		
CHECKED		ROB		
DATE		1-19-66		
ELECT. DES.		DATE		
MECH. DES.		DATE		
TOLERANCES		DECIMALS: .X ± .05, .XX ± .01, .XXX ± .010; FRACTIONS: ± 1/64 ANGLES ± 0° 30'		
UNLESS OTHERWISE SPECIFIED DIMENSIONS ARE IN INCHES AND INCLUDE CHEMICALLY APPLIED OR PLATED FINISHES		DATE: 1/28/66 SHEET: C		