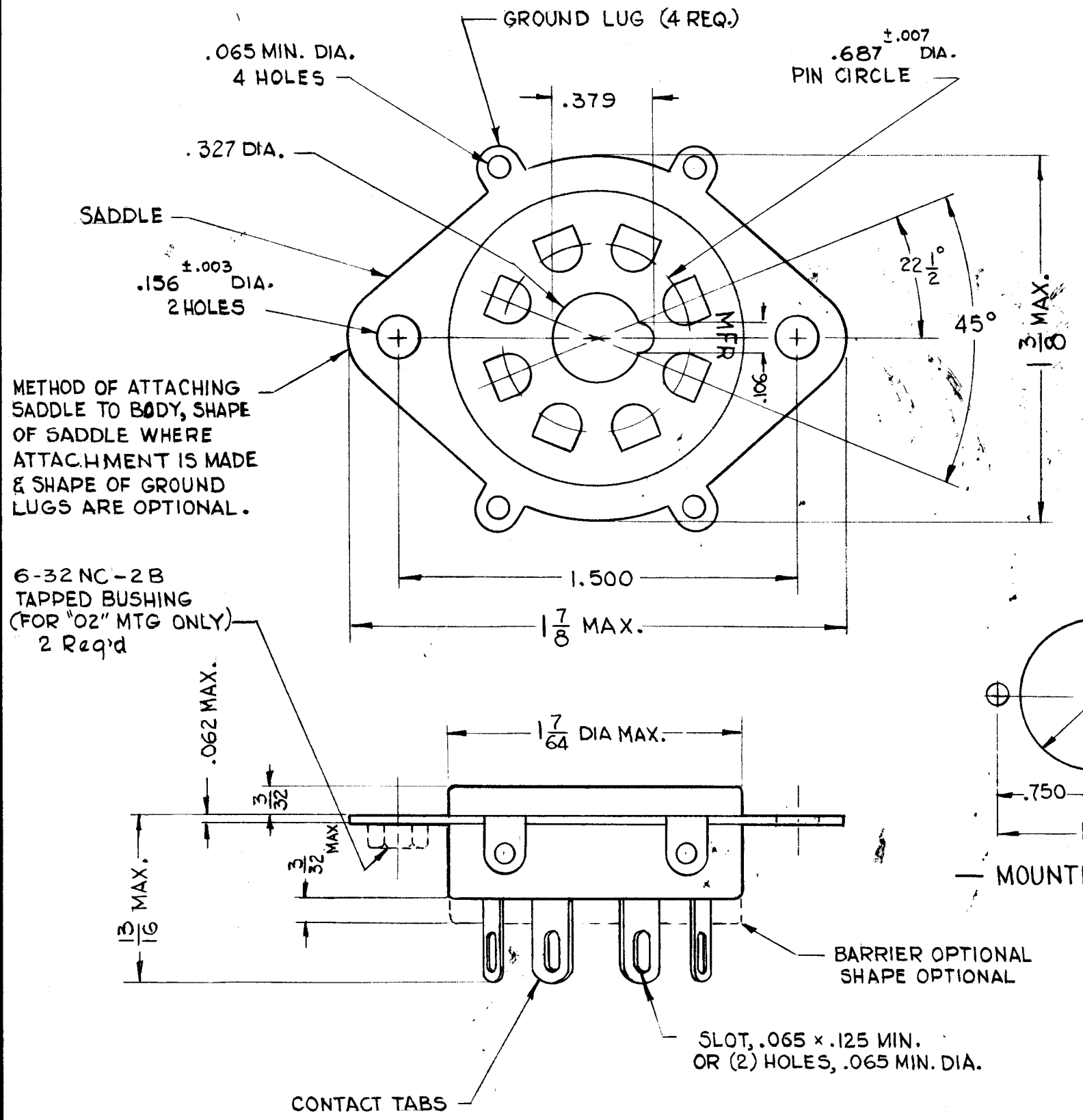


STANDARD DRAWING

A
TS 165

| REVISIONS | | | | | |
|-----------|------------------------------------|---------|------------|-------|---------------|
| SYM | DESCRIPTION | DATE | E.M.N. NO. | DRAFT | CHKD APPD |
| A | ON NOTE 2 ADDED "OR NICKEL PLATED" | 7-26-64 | 16640 | RME | <i>JCA JC</i> |



INSULATOR BODY

C: CERAMIC, GRADE L-4B OR HIGHER AS PER SPEC. JAN-I-10.
P: MOLDED THERMOSETTING PLASTIC AS PER SPEC. MIL-M-14, TYPE MFE.

MOUNTING TYPE

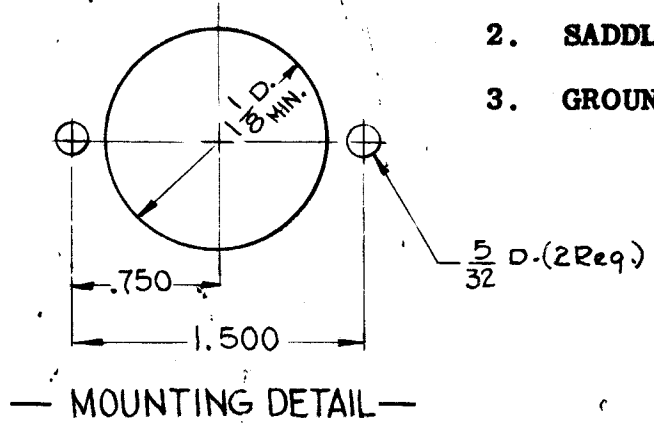
- 01: 2 HOLES 0.156 DIAMETER.**
- 02: 2 MOUNTING BUSHINGS, 6-32 TAPPED.**

NOTES

1. CONTACTS AND CONTACT TABS: PHOSPHOR BRONZE OR BERYLLIUM COPPER PLATED WITH SILVER (99%) AND HOT SOLDER DIPPED.
2. SADDLE SHALL BE BRASS, CADMIUM PLATED (QQ-P-416, TYPE II, CLASS "A" OR "B"), OR NICKEL PLATED
3. GROUND LUGS SHALL BE HOT-SOLDER DIPPED.

TMC TYPE DESIGNATION

| TYPE | INSULATOR BODY | MOUNTING TYPE |
|--------|----------------|---------------|
| TS-105 | C | 01 |



SOCKETS SHALL BE IN ACCORDANCE WITH MIL-S-12883/1A EXCEPT FOR 3/32 LOW CROWN.

| REQ'D. | ITEM | PART NUMBER | DESCRIPTION | SYMBOL |
|---|------|--|---|--|
| LIST OF MATERIAL | | | | |
| MATERIAL | | THE TECHNICAL MATERIEL CORP. MAMARONECK, NEW YORK | | |
| FINISH | | TITLE SOCKET, ELECTRON TUBE SADDLE TYPE, 8 CONTACT, LOW CROWN | | |
| UNLESS OTHERWISE SPECIFIED DIMENSIONS ARE IN INCHES AND INCLUDE CHEMICALLY APPLIED OR PLATED FINISHES | | DRAWN <i>G.D.L</i> CHECKED <i>HQ</i> ELECT. DES. <i>L. Gabel</i> MECH. DES. <i>L. Gabel</i> | DATE <i>5-16-63</i> DATE <i>5/23/63</i> DATE <i>5/23/63</i> | FINAL APPROVAL <i>YFH</i> DATE <i>5-24-63</i> |
| DECIMALS .X ± .05 .XX ± .01 .XXX ± .005 | | FRACTIONS ± 1/64 ANGLES ± 0° 30' | | TOLERANCES |
| Q'TY./UNIT SCALE <i>H</i> | | MODEL USED ON CODE | | ASS'Y. NO. |
| THE CONTENTS OF THIS DRAWING ARE THE EXCLUSIVE PROPERTY OF THE TECHNICAL MATERIEL CORP. ITS UNAUTHORIZED USE OR REPRODUCTION IN WHOLE OR IN PART IS STRICTLY FORBIDDEN. | | TS 165 | | A |
| NOTES | | SHEET | | REV. LTR. |