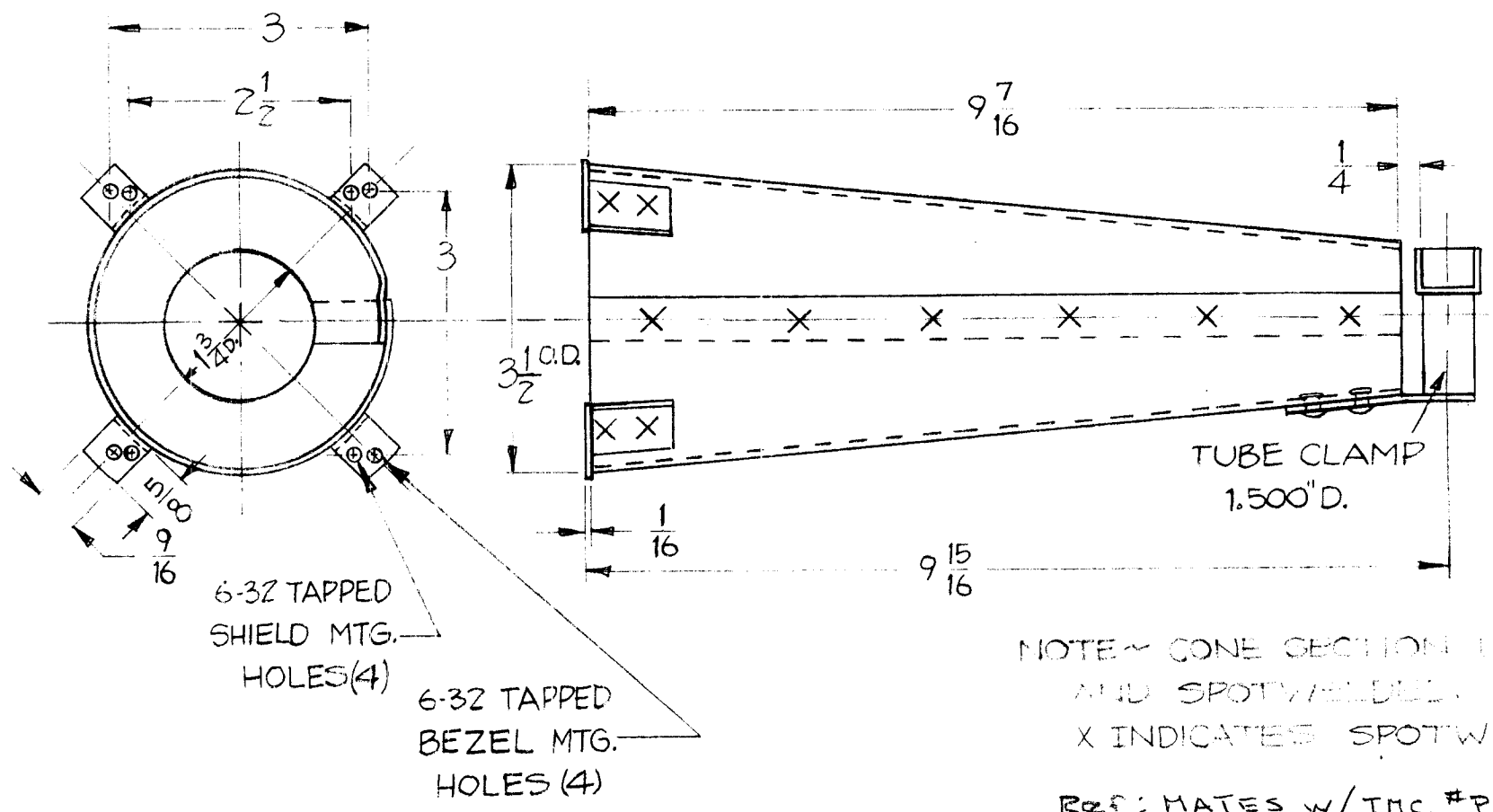


REQ. PER. UNIT	USED ON			TS-148
	MODEL	ASS'Y. NO.	DATE	
1	DVM-2		5-11-60	
1	DVM-4		2-6-62	



NOTE - CONE SECTION TAPPED AND SPOTWELDED.  
 X INDICATES SPOTWELD  
 REF: MATES W/TMC #PC-196

ISSUE	ITEM	CHANGED FROM	DATE	CH. NO.	DRAFTS	CHECKER	ENG. APP.	REQ. ITEM	PART NO.	DESCRIPTION	SYMBOL	
										THE TECHNICAL MATERIEL CORP. MAMARONECK, NEW YORK SHIELD		
									STOCK SIZE			
									MATERIAL			
TOLERANCES			SCALE: S-401-101 (K80803-G)									
DEC. DIM. ± FRAC. DIM. ± ANGULAR DIM. ±			MAXIMUM ALLOWABLE TOLERANCES HAVE BEEN DETERMINED AND ANY DEVIATIONS WILL BE CAUSE FOR REJECTION. REMOVE ALL BURRS AND SHARP EDGES									
								TYPE & TEMPER	HEATTREAT. SPEC.	DRAWN	CHECKED	FINAL APPROVAL
								ZINC CHROMATE PRIMER BLACK ENAMEL				TS-148
								FINISH & SPEC. NO.		ELEC. DES. APP	MECH. DES. APP	