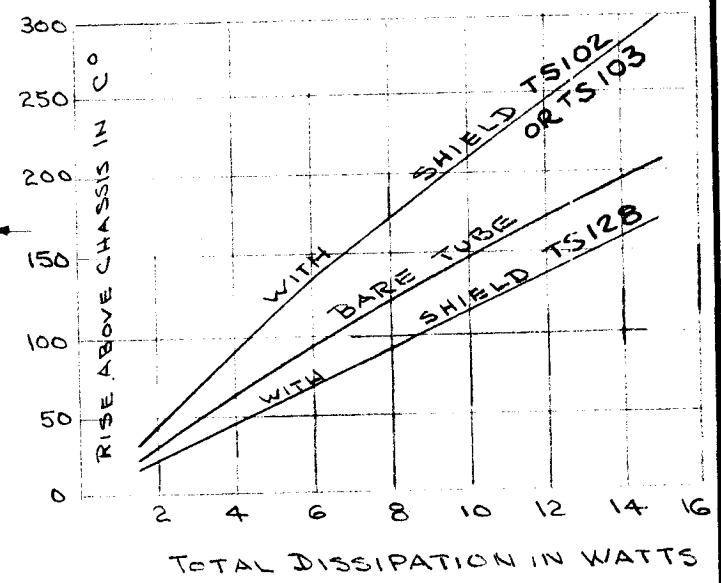


TMC PART NO.	A HEIGHT OF SHIELD	B MAX. SEATED HEIGHT	USE WITH TUBE TYPE	SHIELD TYPE	MFG. PART NO.	USED ON			TS 128	C
						REQ. PER UNIT	MODEL	ASS'Y. NO.		
TS 128-1	1 1/2 <sup>+0</sup> / <sub>-1/16</sub>	1 5/8"	6ALS	C	TR5-50155					
-2	2 <sup>+0</sup> / <sub>-1/16</sub>	2 1/8"	6AW6	C	TR5-50208					
-3	2 1/2 <sup>+0</sup> / <sub>-1/16</sub>	2 5/8"	6AQ5	C	TR5-50211					
-4	1 1/2 <sup>+0</sup> / <sub>-1/16</sub>	1 5/8"	5G70	D	TR5-50211					
-5	2 <sup>+0</sup> / <sub>-1/16</sub>	2 1/8"	12A07	D	TR5-50211					
-6	2 1/2 <sup>+0</sup> / <sub>-1/16</sub>	2 5/8"	12BH7	D	TR5-50211					
-7	2 3/4 <sup>+0</sup> / <sub>-1/16</sub>	2 7/8"	6094	D	TR5-50211					
-8	2 3/4 <sup>+0</sup> / <sub>-1/16</sub>	2 7/8"		D	TR5-50211					

STANDARD DRAWING



**SPECS.**

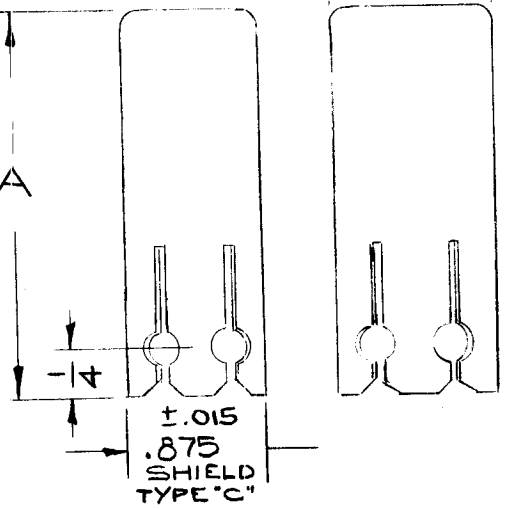
LINER MATERIAL - BERYLLIUM COPPER  
FINISH - BLACK CADMIUM PLATE OR HENDERLUBE

SHELL MATERIAL - HEAT CONDUCTING - NON MAGNETIC  
FINISH - ANODIZE DULL BLACK A OR HENDERLUBE.  
 BOTTOM 5/8 INCH ON INSIDE SHALL BE FREE OF FINISH.

INSTALLATION FORCE - LESS THAN 20 POUNDS AT 25°C ± 5°C

HEAT DISSIPATION CHARACTERISTIC - "X" OR BETTER

MAX. OPERATING TEMP. - 200°C



REQ.	ITEM	PART NO.	DESCRIPTION	SYMBOL									
C	2	±.015 ADD TO PICT. (2 PL) SPECS. ADD. NOTE REV.	10.13.64 12603	WBS									
B	3	INSERT LINER NOTE ADDED MIL SPEC. NOTE ADDED OR ALL MFG PART NO. SUFFIX "B" ADDED	7-15-6 5266	G.D.L.									
A	2	Tolerances Added	7-19-57 1	SK.									
A	1	TS-128-7 & 8 Added											
ISSUE ITEM		CHANGED FROM	DATE	CH. NO.	DRAFTS	CHECKER	ENG. APP.	MATERIAL					
TOLERANCES		SCALE: S401-312			TYPE & TEMPER			HEAT TREAT. SPEC.	DRAWN	CHECKED	FINAL APPROVAL		
DEC. DIM. ±		MAXIMUM ALLOWABLE TOLERANCES HAVE BEEN DETERMINED AND ANY DEVIATIONS WILL BE CAUSE FOR REJECTION. REMOVE ALL BURRS AND SHARP EDGES			FINISH & SPEC. NO.		ELEC. DES. APP.	MECH. DES. APP.	TS 128		C		
FRAC. DIM. ±													
ANGULAR DIM. ±													