

IF IT IS FOUND DESIRABLE TO CHANGE ANY TOLERANCE OR OTHER DETAIL SPECIFIED ON THIS DRAWING NOTIFY THE PURCHASER PROMPTLY.

STANDARD DRAWING

TS-107 E

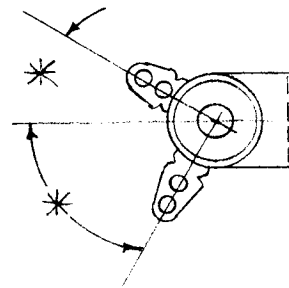
MAXIMUM ALLOWABLE TOLERANCES HAVE BEEN DETERMINED AND DEVIATIONS WILL BE CAUSE FOR REJECTION. REMOVE ALL BURRS AND SHARP EDGES

USED ON

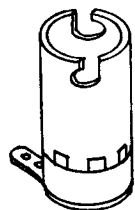
MODEL PROJECT NO. ASS'Y. NO. DATE

TMC NO.	DESCRIPTION
TS-107-1	CLIP WITH EARS DOWNWARD
TS-107-2	BRACKET WITH 5/32 MTG. HOLE
TS-107-3	NO MTG BRACKET
TS-107-4	NO MTG BRACKET ONE TERMINAL/CASE GROUND

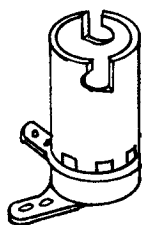
SUPERCEDES TS-109



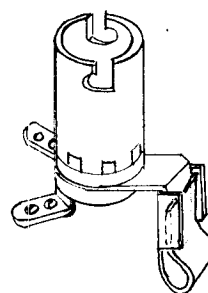
DIM. FOR REF. ONLY.



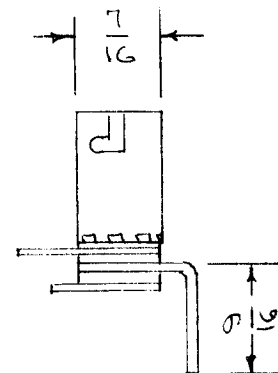
TS-107-4



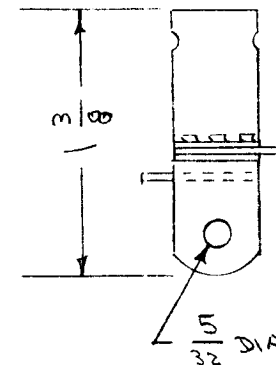
TS-107-3



TS-107-1



TS-107-2



ELEC. SPEC:  
1000V HIPOT TEST

MAT'L:  
BODY - STEEL, CADMIUM PLATE  
TERM. - BRASS HOT TIN  
WASHER - PHENOLIC  
\* ANG DIM. OF LUGS MAY VARY BETWEEN 60° & 90°

REQ.	ITEM	PART NO.	DESCRIPTION	SYMBOL
			THE TECHNICAL MATERIEL CORP. MAMARONECK, NEW YORK	
		STOCK SIZE	LAMPHOLDER	
		MATERIAL WEIGHT PER PC.	MINIATURE BAYONET	
		TYPE & TEMPER	CDID. 2-15-54	G.T.O
		HEAT TREAT. SPEC.	DRAWN	ELEC. DES. APP. MECH. DES. APP.
		FINISH & SPEC. NO.	CHECKED	FINAL APPROVAL

E	ADDED NOTE *	9-11-68	19237	HS	JA	RFM	DR
ISSUE	ITEM	CHANGED FROM	DATE	CN. NO.	DRAFTS	CHECKER	ENG. APP.

TOLERANCES		SCALE 5/101-155 (TYPE 700)
ALL OTHERS	DEC. DIM. ± FRAC. DIM. ± ANGULAR DIM. ±	DRILL, PUNCH, COMMERCIAL STOCK SIZES AND MANUFACTURERS TOLERANCES ARE NOT INCLUDED.

TS-107 E