

IF IT IS FOUND DESIRABLE TO CHANGE ANY TOLERANCE OR OTHER DETAIL SPECIFIED ON THIS DRAWING NOTIFY THE PURCHASER PROMPTLY.

STANDARD DRAWING

TS-105

MAXIMUM ALLOWABLE TOLERANCES HAVE BEEN DETERMINED AND DEVIATIONS WILL BE CAUSE FOR REJECTION. REMOVE ALL BURRS AND SHARP EDGES

RELEASED

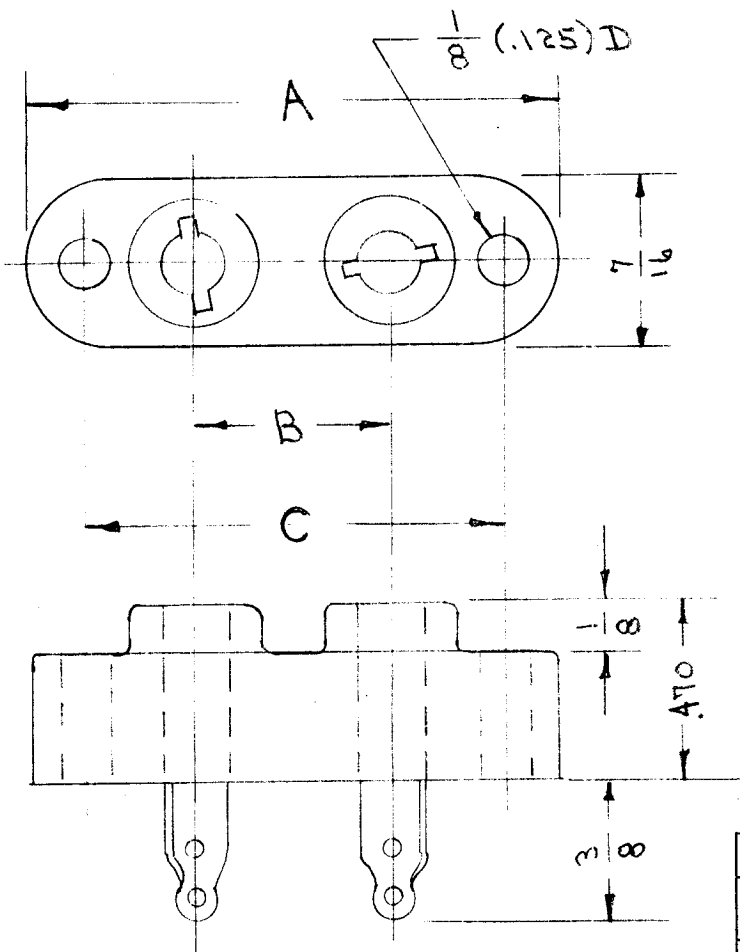
USED ON

MODEL

PROJECT NO.

ASS'Y. NO.

DATE



TMC NO.	CAT. NO.	A	B	C
TS-105-1	K-33102	1 3/8	.487	1 3/32

DIMENSIONS FOR REF. ONLY

REF.: JAMES MILLEN Co.

CONTACTS- PHOSPHOR BRONZE-
SILVER PLATED.

REQ.	ITEM	PART NO.	DESCRIPTION	SYMBOL
	#		THE TECHNICAL MATERIEL CORP. MAMARONECK, NEW YORK	
		STOCK SIZE		
	STEATITE	#	SOCKET, CRYSTAL	
		MATERIAL	WEIGHT PER PC.	
		TYPE & TEMPER	C.D.D. 9-1252	G.T.O. <i>OTB</i>
			DRAWN	ELEC. DES. APP. MECH. DES. APP.
			10-27602	<i>HA</i>
		HEAT TREAT. SPEC.	CHECKED	FINAL APPROVAL
				TS-105
		FINISH & SPEC. NO.		

ISSUE ITEM CHANGED FROM DATE CN. NO. DRAFTS CHECKER ENG. APP.

TOLERANCES

SCALE TWICE SIZE

ALL OTHERS

DEC. DIM. ± .005
FRAC. DIM. ± 1/64
ANGULAR DIM. ±

DRILL, PUNCH, COMMERCIAL STOCK SIZES AND MANUFACTURERS TOLERANCES ARE NOT INCLUDED.