

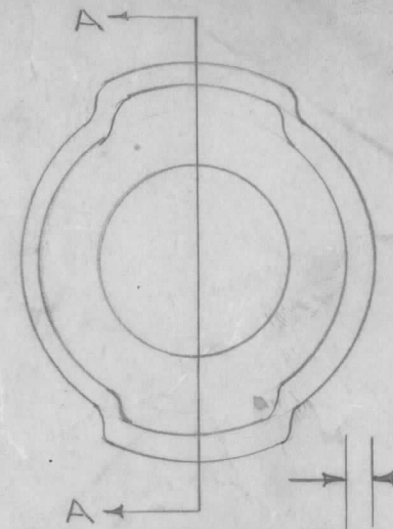
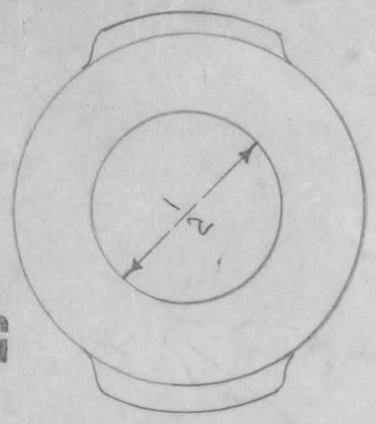
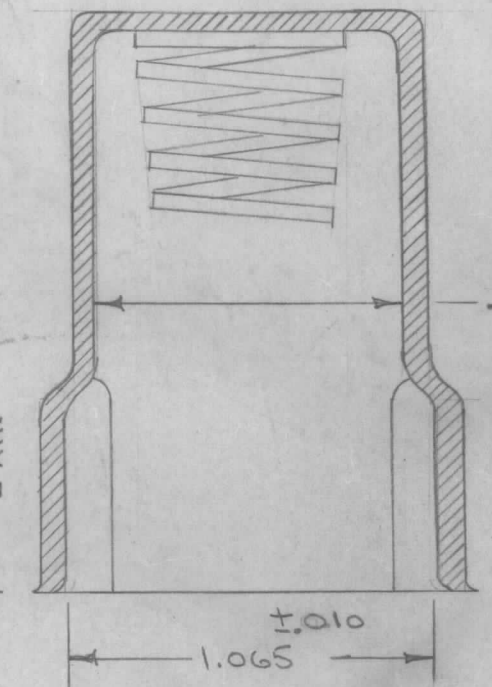
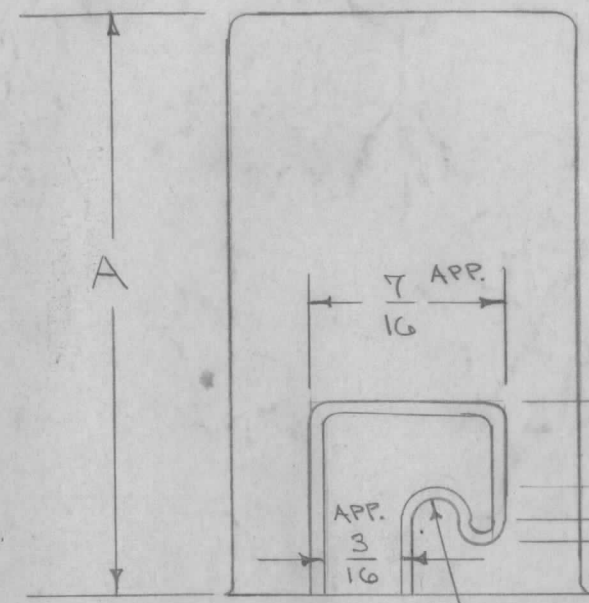
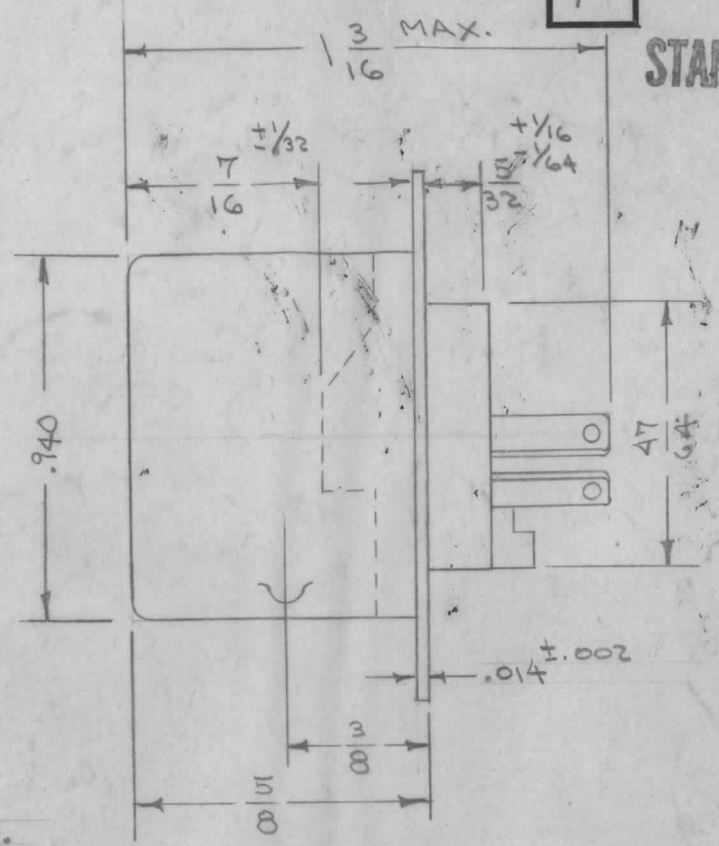
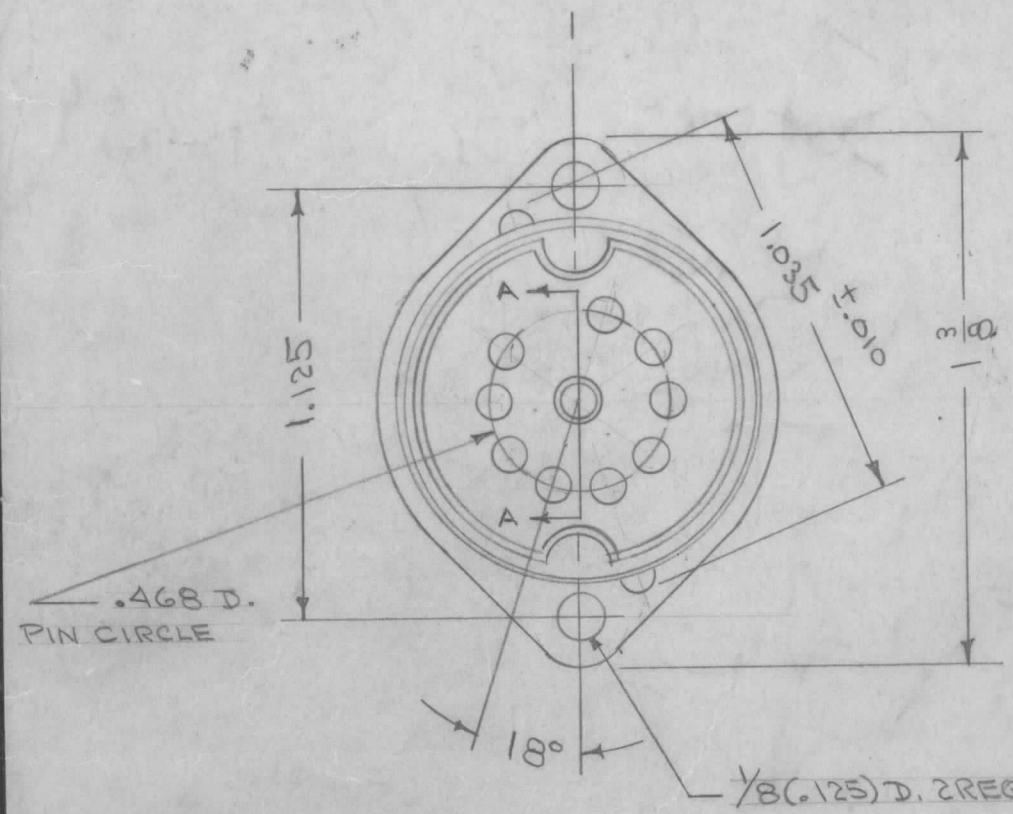
IF IT IS FOUND DESIRABLE TO CHANGE ANY TOLERANCE OR OTHER DETAIL SPECIFIED ON THIS DRAWING NOTIFY THE PURCHASER PROMPTLY.

MAXIMUM ALLOWABLE TOLERANCES HAVE BEEN DETERMINED AND DEVIATIONS WILL BE CAUSE FOR REJECTION. REMOVE ALL BURRS AND SHARP EDGES

THE SOCKET SHIELD BASE SHALL BE BRASS, NICKEL PLATED.
 THE CENTER SHIELD & CONTACT TABS SHALL BE HOT TIN DIPPED.
 THE TUBE SHIELDS SHALL BE BRASS OR COPPER, NICKEL PLATED.

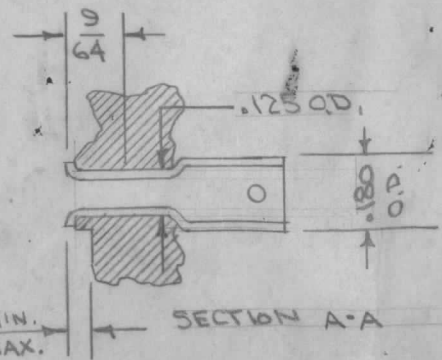
TS103 D

STANDARD DRAWING



TYPE	INSULATING MATERIAL
TS103C01	CERAMIC, GRADE L-48 OR BETTER, AS PER JAN-110
TS103P01	MOULDED THERMOSETTING PLASTIC. MIL-M-14 TYPE MFE.

SEE TMC TS128 FOR MIL TYPE TUBE SHIELDS



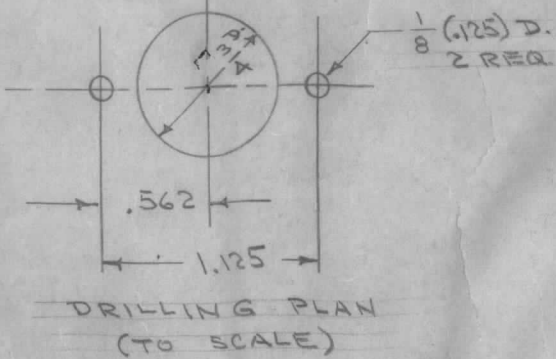
TUBE SHIELD (See Note)

TYPE	A
TS103U01	1/2
TS103U02	15/16
TS103U03	2 3/8

Note: For Black Anodized Tube Shields add - P35A to type number.
 Example: TS103U01-P35A

Denotes Black Anodized

SOCKETS SHALL BE IN ACCORDANCE WITH MIL-S-12883



ISSUE	ITEM	CHANGED FROM	DATE	CN. NO.	DRAFTS	CHECKER	ENG. APP.
D		NOTES CLARIFIED	10.4.66	16981	440		
C	1	BLACK ANODIZE ADDED	1/20/60	1788	116		
#	#	REDRAWN - NO CHANGE			200		

TOLERANCES		SCALE:
ALL OTHERS	DEC. DIM. ± FRAC. DIM. ± ANGULAR DIM. ±	DRILL, PUNCH, COMMERCIAL STOCK SIZES AND MANUFACTURERS TOLERANCES ARE NOT INCLUDED.

MODEL	PROJECT NO.	ASS'Y. NO.	DATE

REQ.	ITEM	PART NO.	DESCRIPTION	SYMBOL
			THE TECHNICAL MATERIEL CORP. MAMARONECK, NEW YORK	
			SOCKET / SHIELD	
			NOVAL	
			CADD. 6-29-54	
			G.T.O	
			ELEC. DES. APP.	
			MECH. DES. APP.	
			CHECKED	
			FINAL APPROVAL	
			TS-103 D	