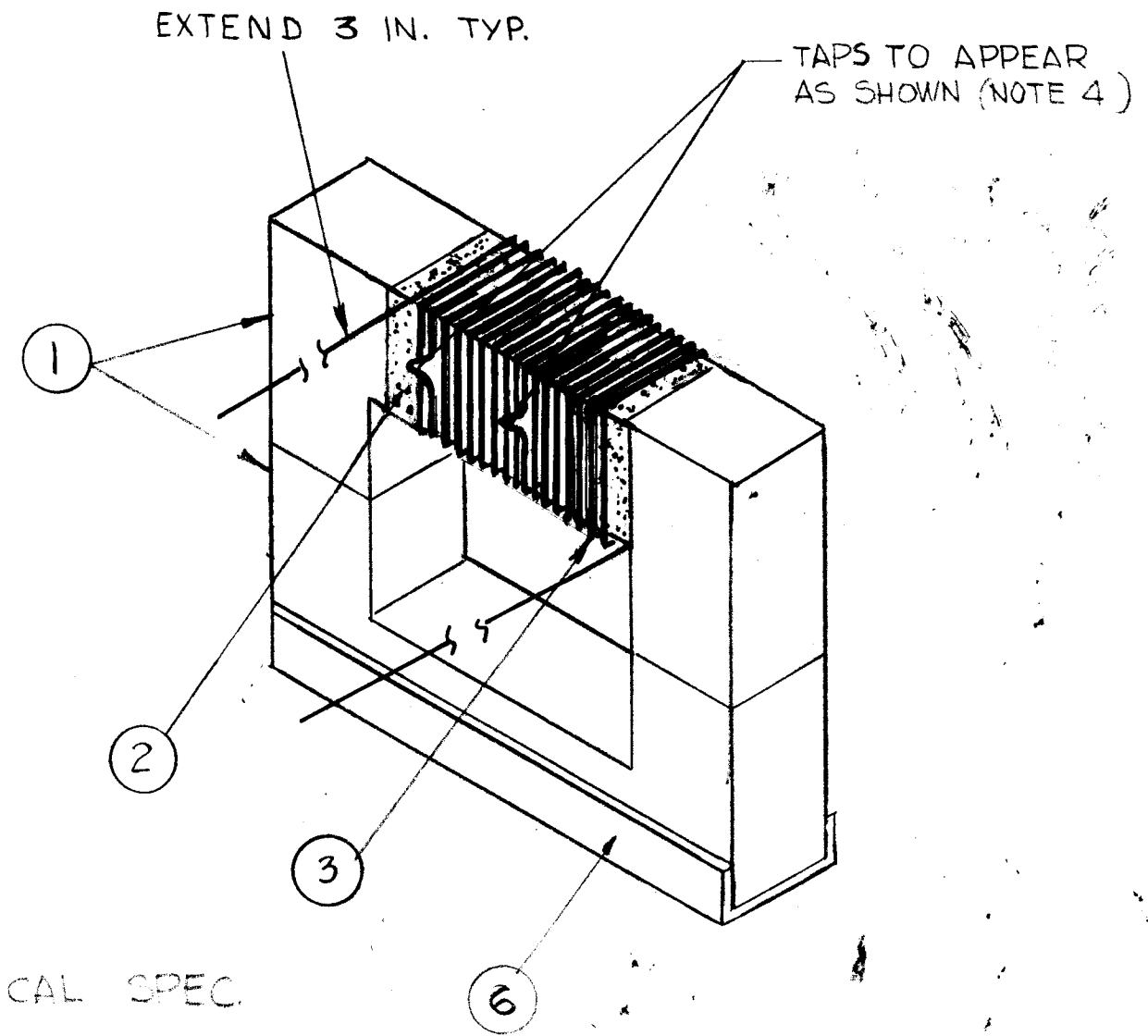


REVISIONS							
E.M.N. NO.	DRAFT	CHKD	ZONE	LTR	DESCRIPTION	DATE	APPROVED
				X	EXP. RELEASE		
				XI	REVISED	11-15-74	
	D.L.			Ø	ORIGINAL RELEASE FOR PRODUCTION	1-2-75	



- NOTES:
- 1- USING ITEM 4 JOIN 1 & 6 TOGETHER AS SHOWN
 - 3- WRAP 2 TURNS ITEM 2 AROUND ITEM 1 AS SHOWN
 - 4- WIND 16 TURN ITEM 3, TAPPED AT 3 & 11 TURNS CLOCKWISE AS SHOWN-
 - 5- FASTEN ITEM 3 TO ITEM 6 WITH ITEM 5 AS SHOWN

ELECTRICAL SPEC.

L =
Q =

REQ'D	ITEM	PART NUMBER	DESCRIPTION	SYM.
	1	6	MSG559	BRACKET, XFMR MTG
X	5	BS 100	SOLDER TIN ALLOY	
X	4	NO.TMC NO.	ADHESIVE (EASTMAN 910)	
X	3	W1123-18	WIRE ELECTRICAL MAG	
X	2	TA 108-5	TAPE	
2	1	CI 101-3Q1	CORE U	

LIST OF MATERIAL

1	HFL-100	
QTY / UNIT	MODEL USED ON	ASS'Y NO.
APPLICATION		
	CODE	

NOTICE TO PERSONS RECEIVING THIS DRAWING
 THE TECHNICAL MATERIEL CORPORATION claims proprietary right in the material disclosed hereon. This drawing is issued in confidence for engineering information only and may not be reproduced or used to manufacture anything shown hereon without permission from THE TECHNICAL MATERIEL CORPORATION to the user. This drawing is loaned for mutual assistance and is subject to recall at any time.

UNLESS OTHERWISE SPECIFIED DIMENSIONS ARE IN INCHES AND INCLUDE CHEMICALLY APPLIED OR PLATED FINISHES

DECIMALS: .X ± .05, .XX ± .01, .XXX ± .005
 FRACTIONS: 1/64
 TOLS. ANGLES: 0° - 30'

FINAL APPROVAL: *[Signature]* DATE: 12/31/74
 MECH. DES. DATE: 2-31-74
 ELECT. DES. DATE:
 CHECKED DATE:
 DRAWN DATE:
 MATERIAL:
 FINISH:
 SCALE:
 SHEET OF:
 ISSUE: Ø

THE TECHNICAL MATERIEL CORP.
 MAMARONECK, NEW YORK

TRANSFORMER, OUTPUT

SIZE: B
 CODE IDENT. NO.: 82679
 DWG NO.: TR 200
 SCALE:
 SHEET OF:
 ISSUE: Ø