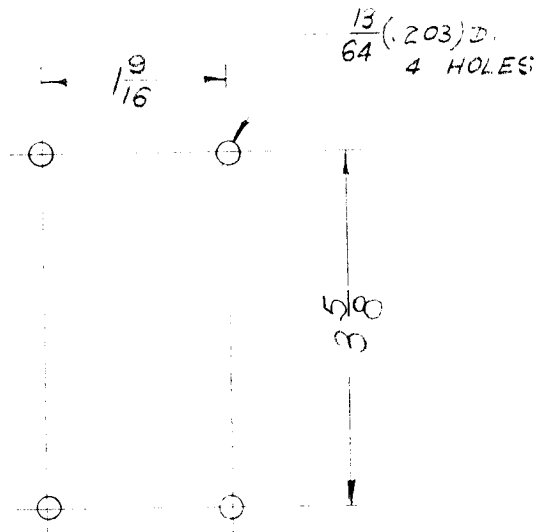
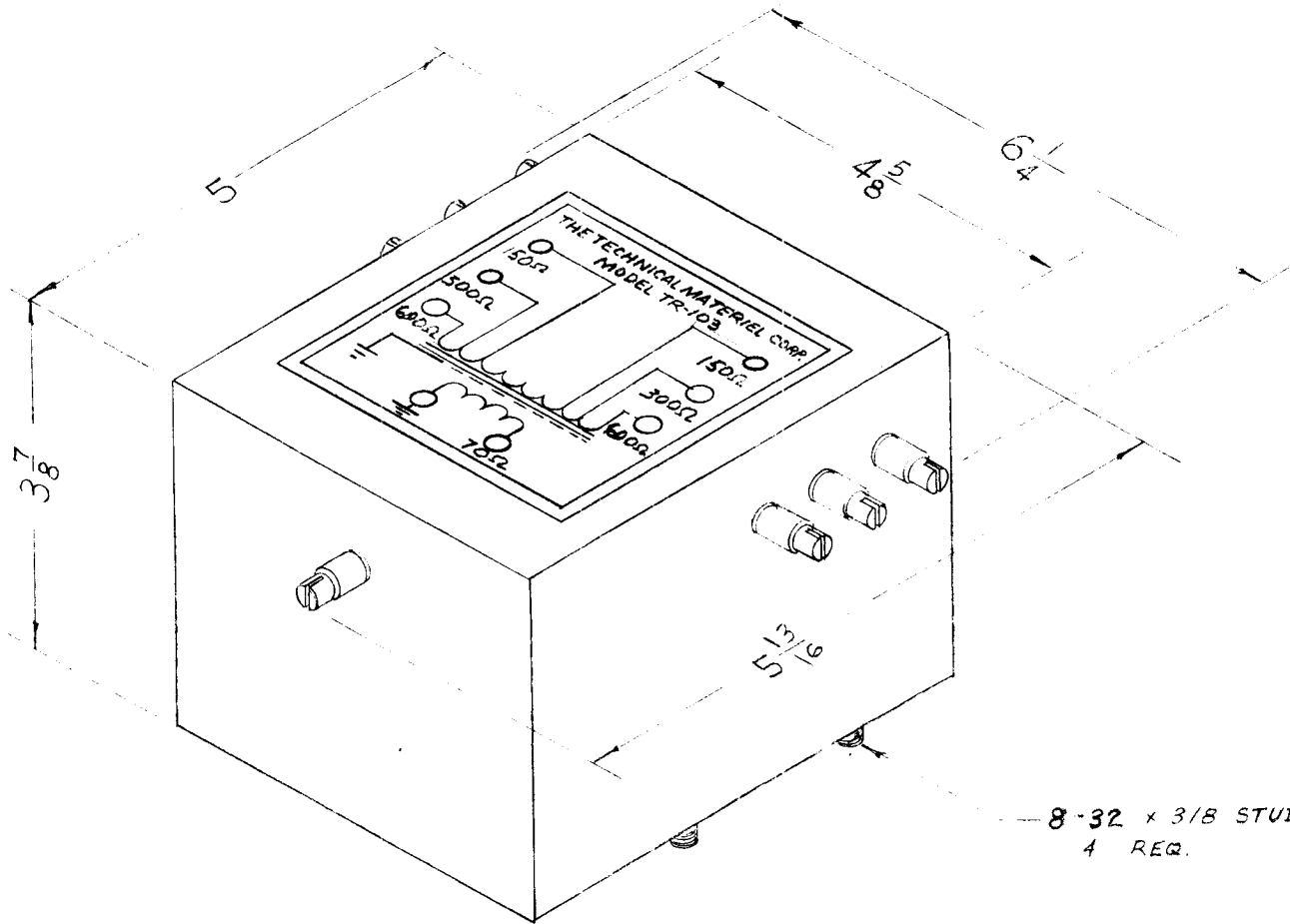


REQ. PER UNIT	USED ON			TR-103	B
	MODEL	ASS'Y. NO.	DATE		
1	TRC-500-704/600B	437	2/20/56		



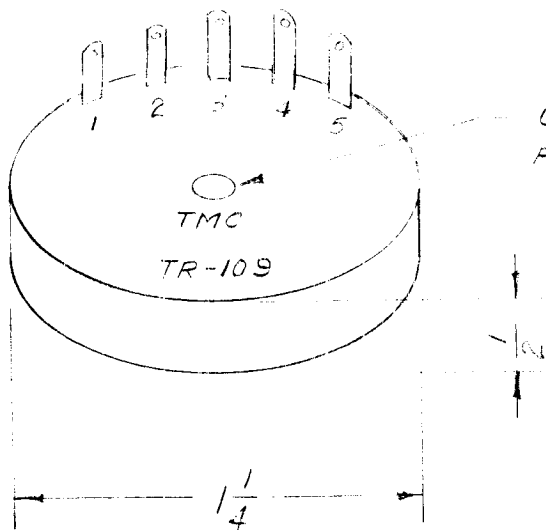
MOUNTING DETAIL

8-32 x 3/8 STUD.
4 REQ.

DIM. FOR REF. ONLY.

REQ.	ITEM	PART NO.	DESCRIPTION				SYMBOL
			THE TECHNICAL MATERIEL CORP. MAMARONECK, NEW YORK				
B	1	PICT, TITLE & MOD. NO. UPDATED	9-4-63	9193	<i>K. J. W.</i>	<i>W.P.</i>	COUPLER, TRANSMISSION, LINE
A	1	TERMINALS RE-NUMBERED	2/20/56	1	<i>J.A. W.</i>	<i>W.P.</i>	
ISSUE	ITEM	CHANGED FROM	DATE	CH. NO.	DRAFTS	CHECKER	ENG. APP.
TOLERANCES			SCALE: 4A-121B				
DEC. DIM. ± FRAC. DIM. ± ANGULAR DIM. ±			MAXIMUM ALLOWABLE TOLERANCES HAVE BEEN DETERMINED AND ANY DEVIATIONS WILL BE CAUSE FOR REJECTION. REMOVE ALL BURRS AND SHARP EDGES				
		TYPE & TEMPER	HEAT TREAT. SPEC.	DRAWN		CHECKED	FINAL APPROVAL
		FINISH & SPEC. NO.		ELEC. DES. APP.		MECH. DES. APP.	TR-103
							B

REQ. PER UNIT	USED ON			TR-109
	MODEL	ASS'Y. NO.	DATE	



CLEARANCE
FOR A 6-32 SCREW

SPECIFICATIONS
 FREQUENCY RANGE 100-500 KCS
 IMPEDANCE - INPUT: 70-300 BAL. - UNBAL.
 OUTPUT: 300 UNBAL.

CONNECTIONS

3-2 70 Ω BAL. - UNBAL. INPUT
 4-2 300 Ω BAL. - UNBAL. INPUT
 1-5 300 Ω UNBAL. OUTPUT

ISSUE	ITEM	CHANGED FROM	DATE	CH. NO.	DRAFTS	CHECKER	ENG. APP.	REQ. ITEM	PART NO.	DESCRIPTION	SYMBOL		
								THE TECHNICAL MATERIEL CORP. MAMARONECK. NEW YORK ANTENNA TRANSFORMER TR-109					
TOLERANCES DEC. DIM. ± FRAC. DIM. ± ANGULAR DIM. ±								SCALE: 2A-1091 MAXIMUM ALLOWABLE TOLERANCES HAVE BEEN DETERMINED AND ANY DEVIATIONS WILL BE CAUSE FOR REJECTION. REMOVE ALL BURRS AND SHARP EDGES					
								MATERIAL		DRAWN		CHECKED	
								TYPE & TEMPER		HEAT TREAT. SPEC.		FINAL APPROVAL	
								FINISH & SPEC. NO.		ELEC. DES. APP.		MECH. DES. APP.	
												TR-109	

IF IT IS FOUND DESIRABLE TO CHANGE ANY TOLERANCE OR OTHER DETAIL SPECIFIED ON THIS DRAWING NOTIFY THE PURCHASER PROMPTLY.

TR-112

A

MAXIMUM ALLOWABLE TOLERANCES HAVE BEEN DETERMINED AND DEVIATIONS WILL BE CAUSE FOR REJECTION.
REMOVE ALL BURRS AND SHARP EDGES

REQ. PER UNIT

USED ON

MODEL

PROJECT NO.

ASS'Y. NO.

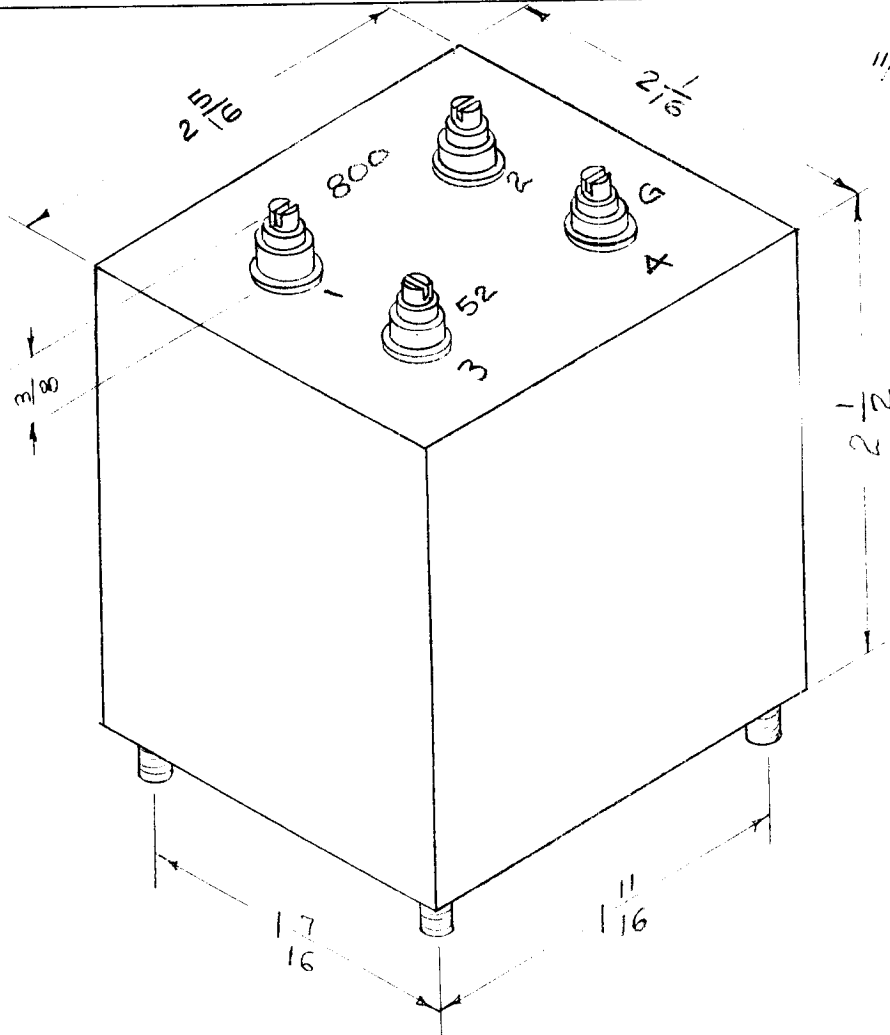
DATE

1

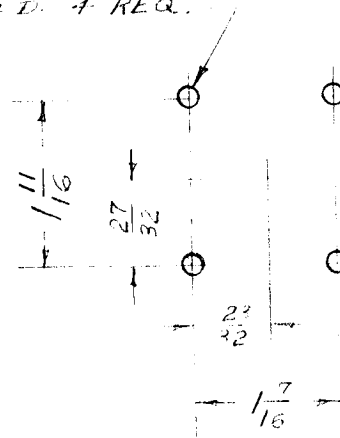
RAC-12

A-990

4-8-55



11/64 D. 4 REQ.



DRILLING PLAN

MECHANICAL SPECIFICATIONS

- 1- CASE STEEL
- 2- COLOR GRAY
- 3- STUDS 6-32 x 1/4

ELECTRICAL SPECIFICATIONS

- 800 Ohm. BALANCED TO
- 52 Ohm. UNBALANCED
- 2-30 mcs

REQ.	ITEM	PART NO.	DESCRIPTION	SYMBOL
			THE TECHNICAL MATERIEL CORP.	
			MAMARONECK. NEW YORK	
			TRANSFORMER SPECIFICATIONS	
			MODEL TR-112	
			DRAWN: [Signature] ELEC. DES. APP. [Signature] MECH. DES. APP. [Signature]	
			CHECKED: [Signature] FINAL APPROVAL	
			2A-988 TR-112 A	

A	1	DIM. CHGD FROM 2.012 X2.240 X 2-1/8 +D 2-1/16 X 2-5/16 X 2-1/2 AS PER BX-137	1/9/58	1	16	[Signature]	[Signature]
ISSUE	ITEM	CHANGED FROM	DATE	CN. NO.	DRAFTS	CHECKER	ENG. APP.

TOLERANCES		SCALE
ALL OTHERS	DEC. DIM. ± FRAC. DIM. ± ANGULAR DIM. ±	DRILL, PUNCH, COMMERCIAL STOCK SIZES AND MANUFACTURERS TOLERANCES ARE NOT INCLUDED.

IF IT IS FOUND DESIRABLE TO CHANGE ANY TOLERANCE OR OTHER DETAIL SPECIFIED ON THIS DRAWING NOTIFY THE PURCHASER PROMPTLY.

TR-119

MAXIMUM ALLOWABLE TOLERANCES HAVE BEEN DETERMINED AND DEVIATIONS WILL BE CAUSE FOR REJECTION. REMOVE ALL BURRS AND SHARP EDGES

REQ. PER UNIT

USED ON

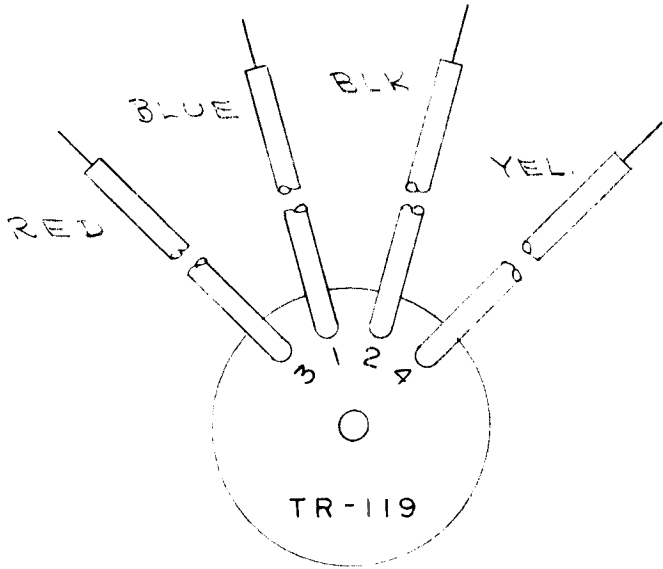
MODEL

PROJECT NO.

ASS'Y. NO.

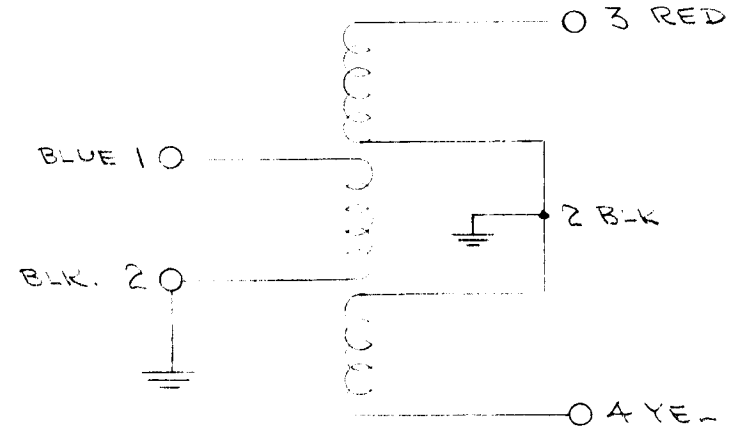
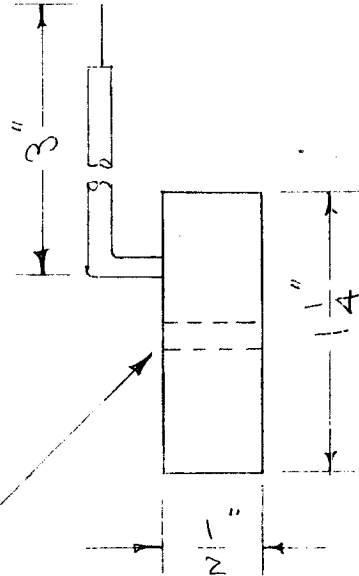
DATE

DIMENSIONS FOR REFERENCE ONLY



CASE - PLASTIC

9/64 D



1-2 INPUT
3-4 OUTPUT
FREQ. RANGE

70 Ω UNBALANCED
300 Ω BALANCED
2-30 MC ± 3db

REQ.	ITEM	PART NO.	DESCRIPTION	SYMBOL
			THE TECHNICAL MATERIEL CORP.	
STOCK SIZE			MAMARONECK. NEW YORK	
			TRANSFORMER	
MATERIAL		WEIGHT PER PC.	ANTENNA MATCHING	
TYPE & TEMPER			CDD 7-20-55	<i>WJ</i>
			DRAWN	ELEC. DES. APP. MECH. DES. APP.
HEAT TREAT. SPEC.			<i>False</i>	<i>ARB</i>
FINISH & SPEC. NO.			CHECKED 2A-1049	FINAL APPROVAL TR-119

ISSUE	ITEM	CHANGED FROM	DATE	CN. NO.	DRAFTS	CHECKER	ENG. APP.
TOLERANCES			SCALE 2A-1049				
ALL OTHERS	DEC. DIM. ± FRAC. DIM. ± ANGULAR DIM. ±		DRILL, PUNCH, COMMERCIAL STOCK SIZES AND MANUFACTURERS TOLERANCES ARE NOT INCLUDED.				

IF IT IS FOUND DESIRABLE TO CHANGE ANY TOLERANCE OR OTHER DETAIL SPECIFIED ON THIS DRAWING NOTIFY THE PURCHASER PROMPTLY.

TR-124

MAXIMUM ALLOWABLE TOLERANCES HAVE BEEN DETERMINED AND DEVIATIONS WILL BE CAUSE FOR REJECTION. REMOVE ALL BURRS AND SHARP EDGES

REQ. PER UNIT

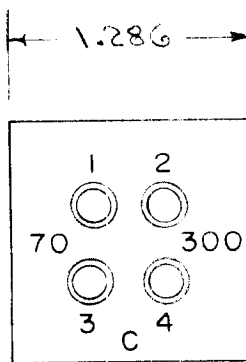
USED ON

MODEL

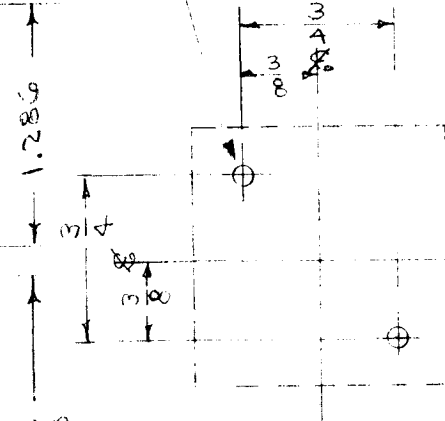
PROJECT NO.

ASS'Y. NO.

DATE



1/64 D HOLES

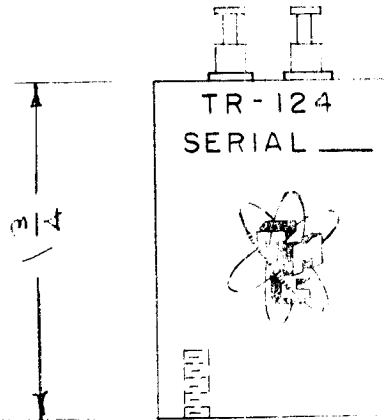


MECHANICAL SPECIFICATIONS

- 1 CASE - STEEL
- 2 TERMINALS - CERAMIC
- 3 FILLER - COMPOUND
- 4 FINISH - GRAY
- * 3 INSERTS - 6-32 X 3/8

ELECTRICAL SPECIFICATIONS

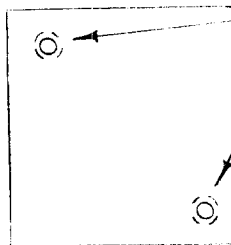
- 1 INPUT - 1-3 70 Z UNBAL.
- OUTPUT - 2-4 300 Z "
- 2 FREQUENCY RESPONSE
- 2-30 MC ± 3 db.



1.00

MOUNTING FLANGE

* WITH 6-32 X 3/8 STUDS SEE TR-113



6-32 THREADED INSERT

REQ.	ITEM	PART NO.	DESCRIPTION	SYMBOL
			THE TECHNICAL MATERIEL CORP.	
			MAMARONECK. NEW YORK	
			TRANSFORMER	
			SPECIFICATION	
			CDR 8/5/K	115K
			DRAWN	MECH. DES. APP.
			HEAT TREAT. SPEC.	FINAL APPROVAL
			2A-999	TR-124
			FINISH & SPEC. NO.	

ISSUE	ITEM	CHANGED FROM	DATE	CN. NO.	DRAFTS	CHECKER	ENG. APP.

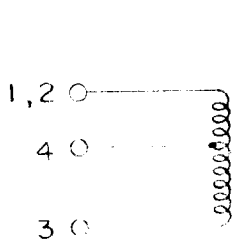
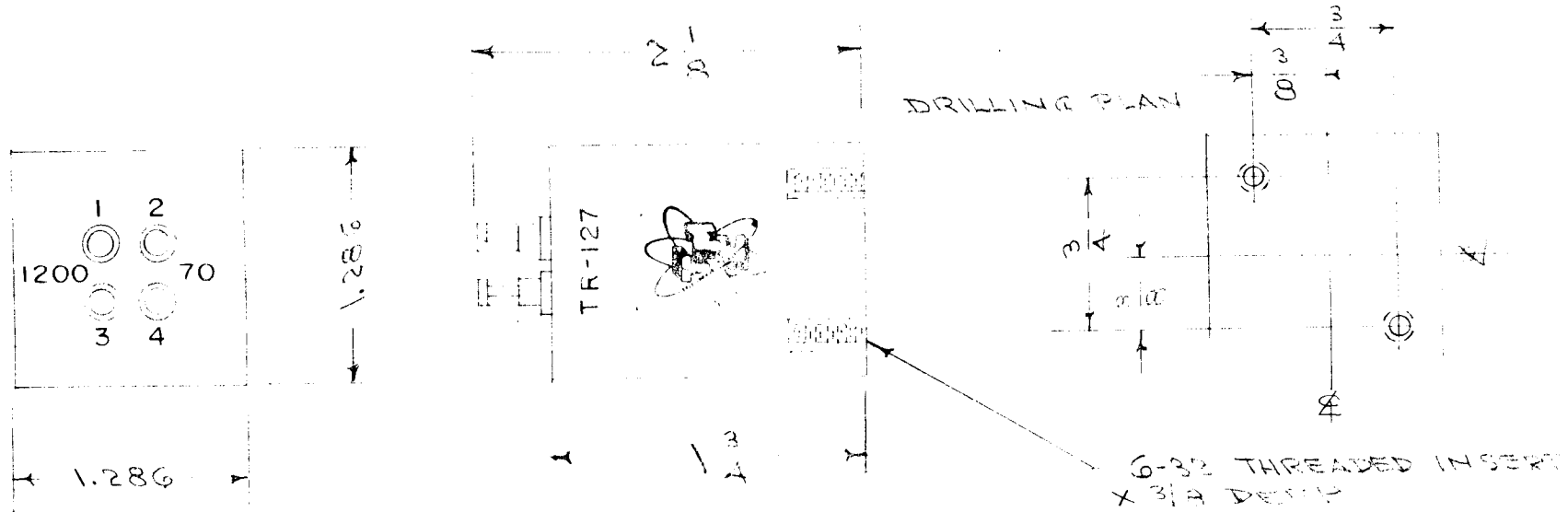
TOLERANCES

SCALE

DRILL, PUNCH, COMMERCIAL STOCK SIZES AND MANUFACTURERS TOLERANCES ARE NOT INCLUDED.

ALL OTHERS
DEC. DIM. ±
FRAC. DIM. ±
ANGULAR DIM. ±

REQ. PER UNIT	USED ON			TR-127	A
	MODEL	ASS'Y. NO.	DATE		

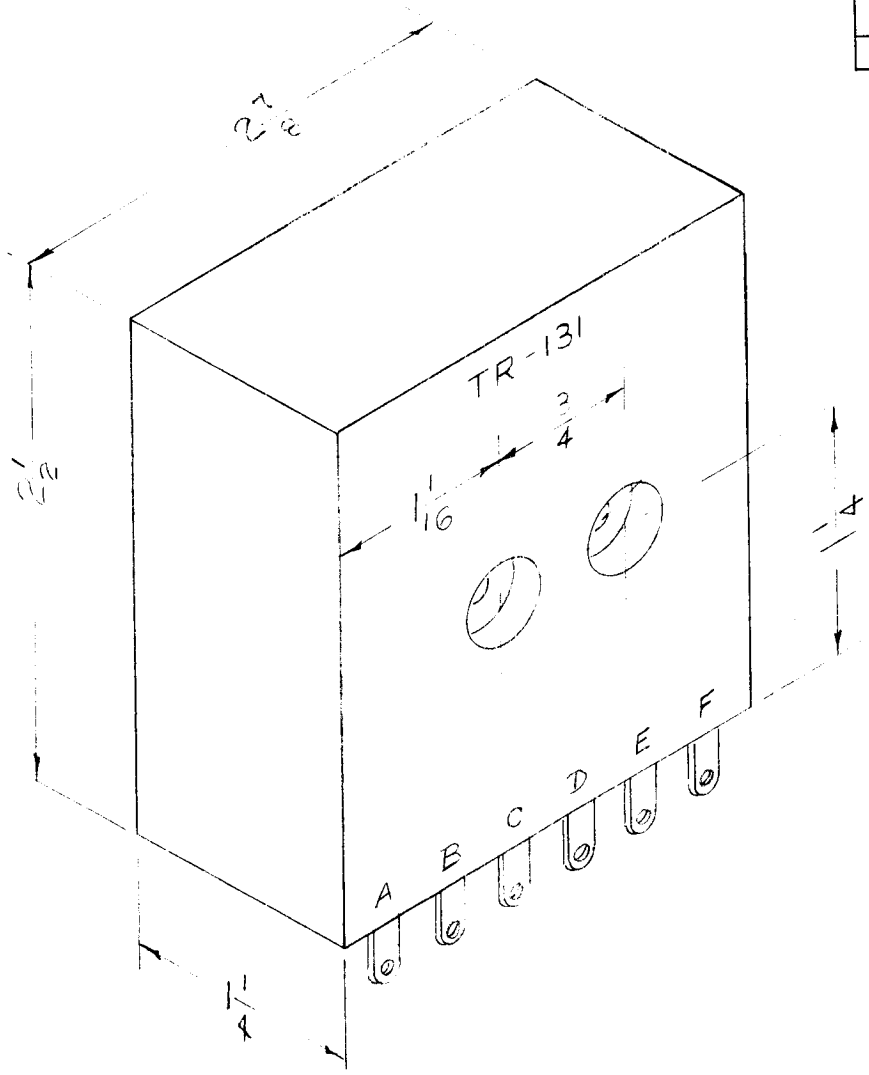


ELECTRICAL DATA
 PRIMARY RANGE 2-8 MC. ±3db.
 2-4 70Ω UNBALANCED
 1-3 120Ω UNBALANCED
 WINDING 18 GA. AWG
 COIL WINDING 100% FULL

MECHANICAL SPECIFICATIONS
 CASE - STEEL
 INSERTS - 6-32 X 3/8 DEPTH
 FILLER - COMPOUND
 COLOR - GRAY

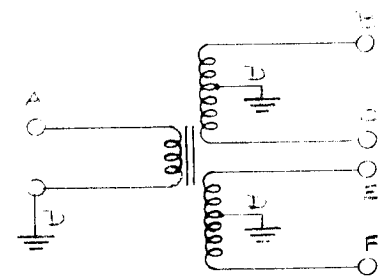
ISSUE	ITEM	CHANGED FROM	DATE	CH. NO.	DRAFTS	CHECKER	ENG. APP.	REQ. ITEM	PART NO.	DESCRIPTION	SYMBOL						
										THE TECHNICAL MATERIEL CORP. MAMARONECK. NEW YORK							
										TRANSFORMER							
										70Ω - 120Ω UNBAL.							
A	2	70 WAS SET. 1-3															
	1	1200 " " 2-4															
TOLERANCES			SCALE: 2A-1112					MATERIAL		CDD 10-3-55 2A-1112							
DEC. DIM. ±			MAXIMUM ALLOWABLE TOLERANCES HAVE BEEN DETERMINED AND ANY DEVIATIONS WILL BE CAUSE FOR REJECTION. REMOVE ALL BURRS AND SHARP EDGES					TYPE & TEMPER		HEAT TREAT. SPEC.		DRAWN		CHECKED		FINAL APPROVAL	
FRAC. DIM. ±								FINISH & SPEC. NO.		ELEC. DES. APP.		MECH. DES. APP.		A.J.J.		TR-127	
ANGULAR DIM. ±																	

REQ. PER UNIT	USED ON			TR-131	A
	MODEL	ASS'Y. NO.	DATE		
1	LFD-2		3-28-56		



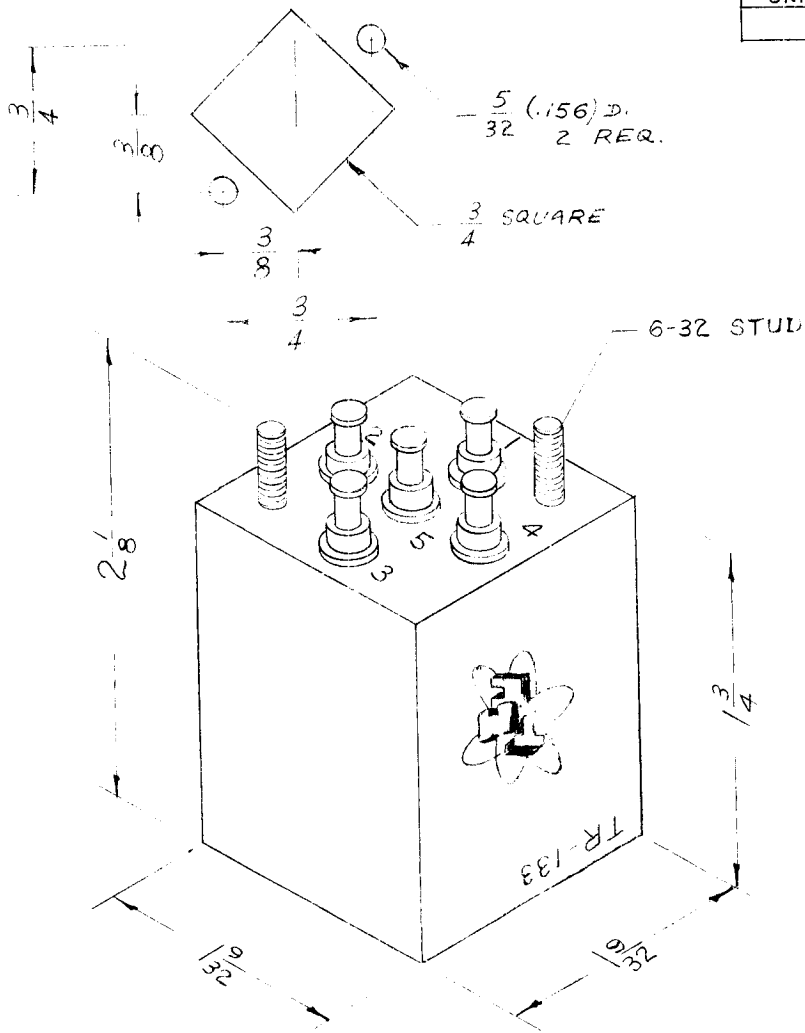
ELECTRICAL SPECIFICATION.
 FREQUENCY RANGE - 15 - 2000 KC.
 INPUT IMPEDANCE 50/70Ω UNBALANCED.
 OUTPUT " 50/70Ω "
 INSERTION LOSS - NOMINALLY 2db
 BELOW OPTIMUM
 DISTRIBUTION.

CONNECTIONS A - ANTENNA INPUT.
 B, C, E, F - RECEIVER INPUT.
 D - GROUND.

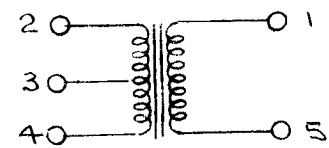


REQ. ITEM	PART NO.	DESCRIPTION	SYMBOL
		THE TECHNICAL MATERIÉL CORP. MAMARONECK. NEW YORK	
		TRANSFORMER	
		LOW FREQUENCY DIST.	
A		INPUT IMP. WAS 70 OHM CUT PUT IMP. WAS 50 OHM	
ISSUE ITEM	CHANGED FROM	DATE	CH. NO.
		9/9/65	14754
			DRAFTS
			CHECKER
			ENG. APP.
TOLERANCES		SCALE:	4A-1133
DEC. DIM. ±		MAXIMUM ALLOWABLE TOLERANCES HAVE BEEN DETERMINED AND ANY DEVIATIONS WILL BE CAUSE FOR REJECTION.	
FRAC. DIM. ±		REMOVE ALL BURRS AND SHARP EDGES	
ANGULAR DIM. ±		TYPE & TEMPER	HEAT TREAT. SPEC.
		FINISH & SPEC. NO.	
		DRAWN	CHECKED
		ELEC. DES. APP.	MECH. DES. APP.
		FINAL APPROVAL	
		A. J. J.	
		TR-131	

MOUNTING DETAIL



REQ. PER UNIT	USED ON			TR-133
	MODEL	ASS'Y. NO.	DATE	



SPECIFICATIONS

FREQUENCY RANGE: 2-32 MC.
 IMPEDANCE - INPUT: 70-300 BAL-UNBAL.
 " - OUTPUT: 300 UNBAL.

CONNECTIONS

3-2 - 70 Ω BAL-UNBAL. INPUT.
 4-2 - 300 Ω BAL-UNBAL. INPUT
 1-5 - 300 Ω UNBAL. OUTPUT

DIMENSIONS FOR REF. ONLY.

ISSUE	ITEM	CHANGED FROM	DATE	CH. NO.	DRAFTS	CHECKER	ENG. APP.	REQ. ITEM	PART NO.	DESCRIPTION	SYMBOL
										THE TECHNICAL MATERIEL CORP. MAMARONECK, NEW YORK ANTENNA TRANSFORMER 2-32 MC.	
									STOCK SIZE		
									MATERIAL		
										12-28-55 DRAWN: <i>[Signature]</i> CHECKED: <i>[Signature]</i> FINAL APPROVAL: <i>[Signature]</i>	
										TYPE & TEMPER HEAT TREAT. SPEC.	
										FINISH & SPEC. NO. ELEC. DES. APP. <i>[Signature]</i> MECH. DES. APP. <i>[Signature]</i>	TR-133

IF IT IS FOUND DESIRABLE TO CHANGE ANY TOLERANCE OR OTHER DETAIL SPECIFIED ON THIS DRAWING NOTIFY THE PURCHASER PROMPTLY.

TR-142

MAXIMUM ALLOWABLE TOLERANCES HAVE BEEN DETERMINED AND DEVIATIONS WILL BE CAUSE FOR REJECTION. REMOVE ALL BURRS AND SHARP EDGES

USED ON

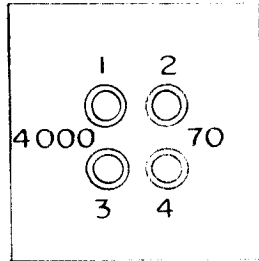
MODEL

PROJECT NO.

ASS'Y. NO.

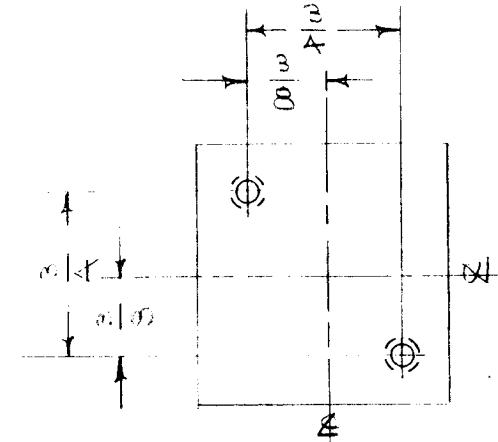
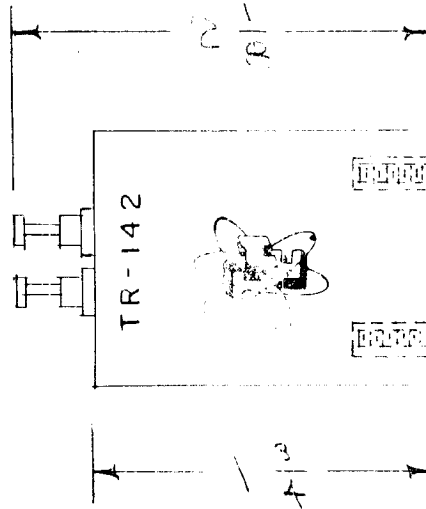
DATE

DRILLING PLAN



1.286

1.286

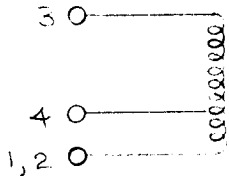


THREADED INSERT 6-32 X 9/8 DEEP

ELECTRICAL DATA

TERMINALS: 2-8 MΩ ± 5%
 2-4 70Ω UNBALANCED
 1-3 4000Ω UNBALANCED
 TERMINALS 1 & 2 ARE
 CONNECTED INTERNALLY.

MECHANICAL SPECIFICATIONS
 CASE - STEEL
 INSERT - 6-32 X 9/8 DEEP
 FINISH - COMPOUND
 COLOR - GRAY



REQ.	ITEM	PART NO.	DESCRIPTION	SYMBOL
			THE TECHNICAL MATERIEL CORP.	
			MAMARONECK, NEW YORK	
STOCK SIZE			TRANSFORMER	
		MATERIAL	WEIGHT PER PC.	
		70Ω - 4000Ω UNBALANCED		
		CDD 8-11-52	8 2	
		2A-1332		
		TYPE & TEMPER	DRAWN	ELEC. DES. APP.
			A. J. J.	
		HEAT TREAT. SPEC.	CHECKED	FINAL APPROVAL
			2A-1332	TR-142
		FINISH & SPEC. NO.		

ISSUE ITEM CHANGED FROM DATE CN. NO. DRAFTS CHECKER ENG. APP.

TOLERANCES

SCALE

ALL
HERS

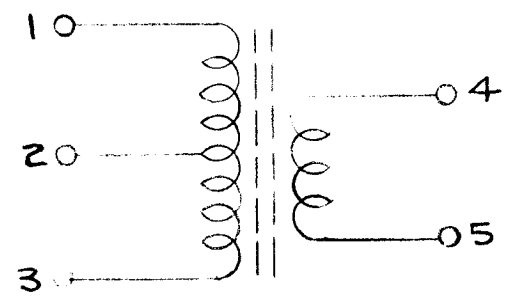
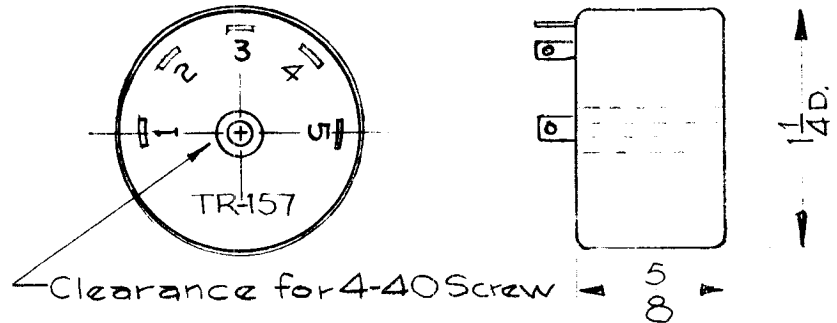
DEC. DIM. ±
 FRAC. DIM. ±
 ANGULAR DIM. ±

DRILL, PUNCH, COMMERCIAL STOCK
 SIZES AND MANUFACTURERS
 TOLERANCES ARE NOT INCLUDED.

REQ. PER. UNIT	USED ON			TR-157	A
	MODEL	ASS'Y. NO.	DATE		
1	AK-100		11-18-59		

— ELECTRICAL SPEC. —

PRIMARY: 9-13 mh Q=>5
 SECONDARY: 1.1-1.5 mh Q=>2



ISSUE	ITEM	CHANGED FROM	DATE	CH. NO.	DRAFTS	CHECKER	ENG. APP.	REQ.	ITEM	PART NO.	DESCRIPTION	SYMBOL	
											THE TECHNICAL MATERIEL CORP. MAMARONECK, NEW YORK.		
											TRANSFORMER, R.F.		
A	1	LEADS & COLORS DELETED. NOS ADDED	9-16-63	9958	<i>YB</i>	<i>JLD</i>	<i>WFB</i>						
TOLERANCES			SCALE: 2A-180'					TYPE & TEMPER		HEAT TREAT. SPEC.		DRAWN <i>WFB</i> CHECKED <i>JLD</i> FINAL APPROVAL <i>BP</i>	
DEC. DIM. ± FRAC. DIM. ± ANGULAR DIM. ±			MAXIMUM ALLOWABLE TOLERANCES HAVE BEEN DETERMINED AND ANY DEVIATIONS WILL BE CAUSE FOR REJECTION. REMOVE ALL BURRS AND SHARP EDGES					FINISH & SPEC. NO.		ELEC. DES. APP		MECH. DES. APP	
											TR-157	A	

REQ. PER UNIT	USED ON		
	MODEL	ASSY. NO.	DATE
1	DVM-2		6-29-60
1	DVM-4		6-8-62

TR-161 B

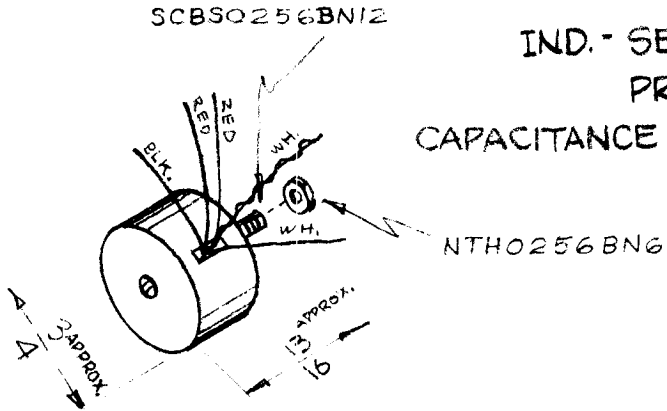
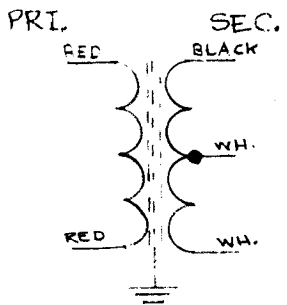
SYMBOL	FUNCTION
	100kc XTAL FILTER

SPECIFICATIONS

Q.- SEC. > 115 at 100kc
PRI. > 70

IND.- SEC. 8 1/2 MH. RES. APPROX. 12.5Ω
PRI. 600 MH.

CAPACITANCE SEC. 300 MMF.
PRI. 270 MMF at 400 KC.



REQ.	ITEM	PART NO.	DESCRIPTION				SYMBOL
			THE TECHNICAL MATERIEL CORP. MAMARONECK, NEW YORK				
			TRANSFORMER, RF				
			MATERIAL				
			TYPE & TEMPER	HEAT TREAT. SPEC.	DRAWN	CHECKED	FINAL APPROVAL
			FINISH & SPEC. NO.		ELEC. DES. APP	MECH. DES. APP	

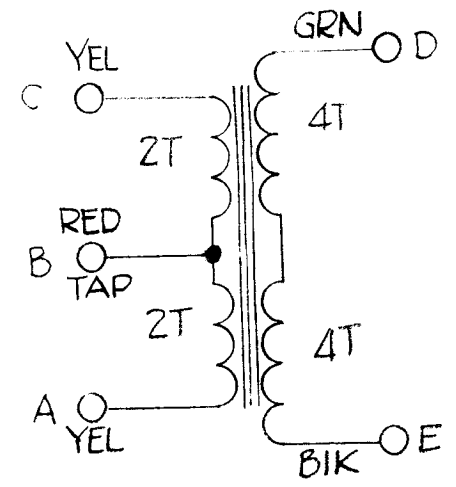
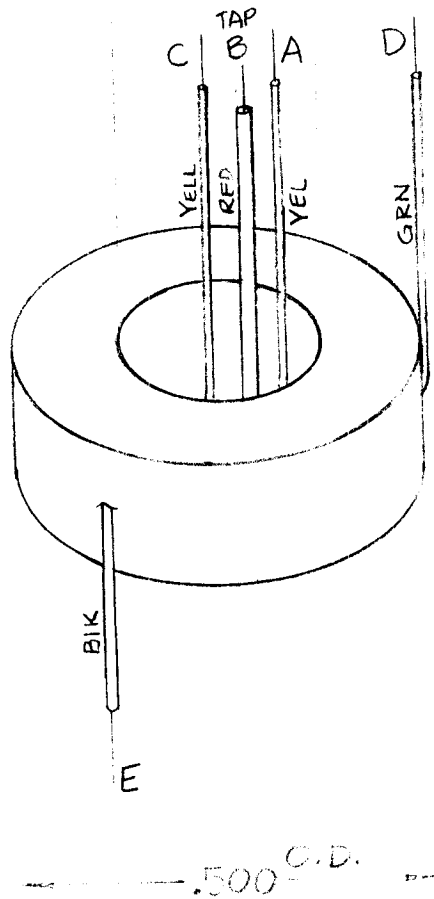
ISSUE	ITEM	CHANGED FROM	DATE	CH. NO.	DRAFTS	CHECKER	ENG. APP.
B	1	BLACK LEADS WERE WHITE ON PICT'L. & SCHEM.	8/31/61	5522	4.4	GAE	
A	2	NTH0256BN6 WAS NTH0348BR6	8/21/61	5453	WH	RL	
	1	SCBSQ256BN12 WAS SCBSQ308BR2					

TOLERANCES	SCALE: ZA-1928
DEC. DIM. ± FRAC. DIM. ± ANGULAR DIM. ±	MAXIMUM ALLOWABLE TOLERANCES HAVE BEEN DETERMINED AND ANY DEVIATIONS WILL BE CAUSE FOR REJECTION. REMOVE ALL BURRS AND SHARP EDGES

D. J. [Signature] [Signature]
TR-161 B

REQ. PER. UNIT	USED ON			TR-163	A
	MODEL	ASS'Y. NO.	DATE		
1	CHG-1	I.F. SECT.	11/3/60		

1/4" .250

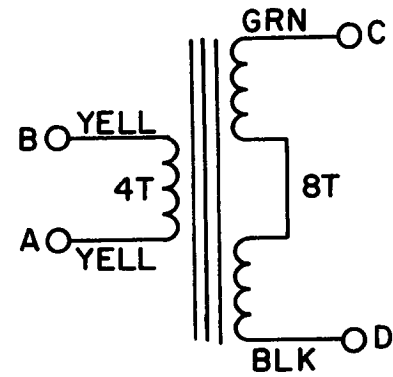
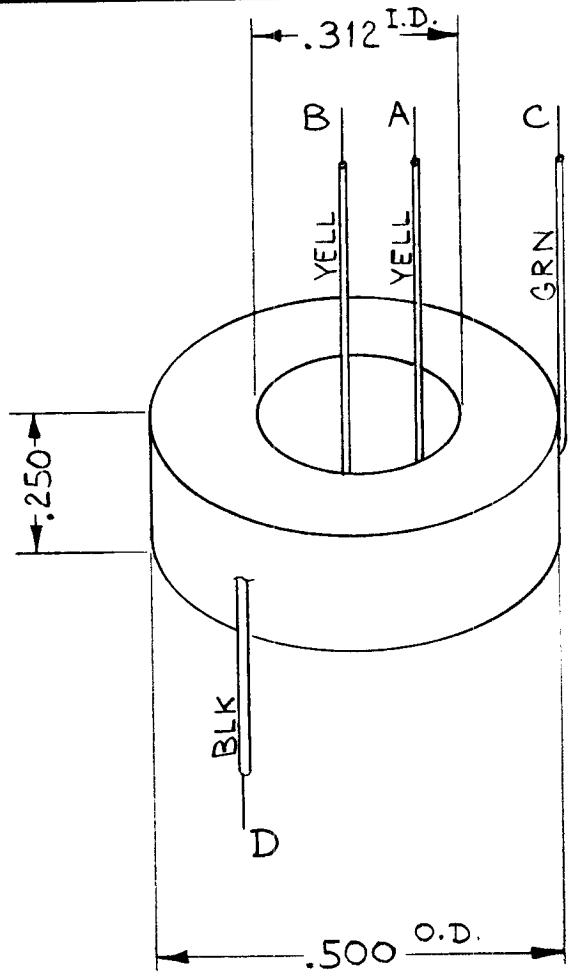


ELECTRICAL SPECIFICATION:

WIRE #30 MAGNET WIRE
 WINDING A-C 4 TOTAL TURNS
 WINDING D-E 8 TOTAL TURNS
 CORE-TOROIDAL (FERROX CUBE)
 IMPEDANCE: A-C = 70 Ω BAL
 D-E = 300 Ω BAL
 FREQ. RANGE: 2-30 MHz

REQ.	ITEM	PART NO.	DESCRIPTION				SYMBOL
			THE TECHNICAL MATERIEL CORP.				
			MAMARONECK, NEW YORK				
			TRANSFORMER, RE FIXED				
A	1	ELEC SPEC (IMPEDANCE 300Ω @ 500MHz)	11-20-61	5935	D. L.	[Signature]	
ISSUE	ITEM	CHANGED FROM	DATE	CH. NO.	DRAFTS	CHECKER	ENG. APP.
TOLERANCES			SCALE: ZA-2015				
DEC. DIM. ±			MAXIMUM ALLOWABLE TOLERANCES HAVE BEEN DETERMINED AND ANY DEVIATIONS WILL BE CAUSE FOR REJECTION. REMOVE ALL BURRS AND SHARP EDGES				
FRAC. DIM. ±							
ANGULAR DIM. ±							
TYPE & TEMPER		HEAT TREAT. SPEC.	DRAWN		CHECKED		FINAL APPROVAL
FINISH & SPEC. NO.		ELEC. DES. APP.	MECH. DES. APP.		TR-163		A

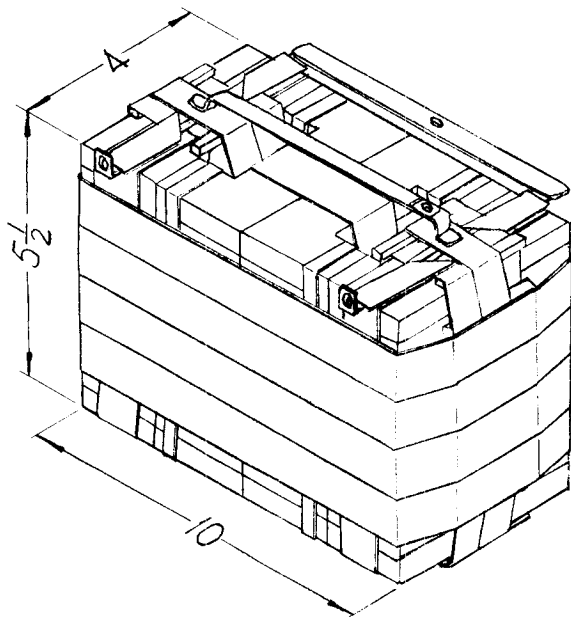
REQ. PER UNIT	USED ON			TR-165
	MODEL	ASS'Y. NO.	DATE	
1	CHG-2	I.F SECT.	4-12-61	



ELECTRICAL SPECIFICATIONS

WINDING A-B 4 TOTAL TURNS.
 WINDING C-D 8 TOTAL TURNS.
 CORE - TOROIDAL (FERROX CUBE).
 IMPEDANCE A-B = 70 Ω @ 100 KHz
 C-D = 300 Ω @ 100 KHz
 FREQUENCY 2-30 Mc

ISSUE	ITEM	CHANGED FROM	DATE	CH. NO.	DRAFTS	CHECKER	ENG. APP.	REQ. ITEM	PART NO.	DESCRIPTION	SYMBOL	
										THE TECHNICAL MATERIEL CORP. MAMARONECK, NEW YORK		
										TRANSFORMER, RF FIXED		
A	1	IMPEDANCE C-D = 300 Ω WAS 500 Ω	11-20-61	5935	EG							
TOLERANCES			SCALE: DO NOT SCALE (2A-2093)									
DEC. DIM. ± FRAC. DIM. ± ANGULAR DIM. ±			MAXIMUM ALLOWABLE TOLERANCES HAVE BEEN DETERMINED AND ANY DEVIATIONS WILL BE CAUSE FOR REJECTION. REMOVE ALL BURRS AND SHARP EDGES					TYPE & TEMPER	HEAT TREAT. SPEC.	DRAWN	CHECKED	FINAL APPROVAL
										RB		TR-165
								FINISH & SPEC. NO.		ELEC. DES. APP.	MECH. DES. APP.	

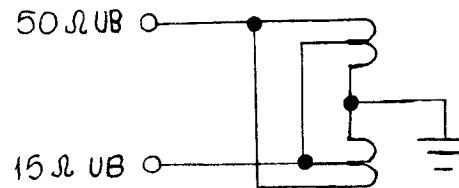


REQ. PER UNIT	USED ON			TR-180	Ø
	MODEL	ASS'Y. NO.	DATE		
1	200K-AX-392		2-3-64		

SPECIFICATIONS:

IMPEDANCE ~ 50 Ω UNBALANCED
15 Ω UNBALANCED

WATTS ~ 20 KW OUTPUT



SCHEMATIC DIAGRAM

				REQ. ITEM	PART NO.	F. BUDETTI	DESCRIPTION	SYMBOL
				STOCK SIZE		THE TECHNICAL MATERIEL CORP. MAMARONECK, NEW YORK		
				MATERIAL		TRANSFORMER RF 50UB-15UB		
○	ORIGINAL RELEASE FOR PRODUCTION	5/21/64	○	A.M.				
SYM	DESCRIPTION	DATE	CH. NO.	DRAFTS	CHECKER	ENG. APP.		
UNLESS OTHERWISE SPECIFIED DIMENSIONS ARE IN INCHES AND INCLUDE CHEMICALLY APPLIED OR PLATED FINISHES		SCALE						
DECIMALS .X ± .05 .XX ± .01 .XXX ± .005		FRACTIONS ± 1/64 ANGLES ± 0° 30'		CODE	4A3158			
TOLERANCES				FINISH & SPEC. NO.		ELEC. DES. APP.	MECH. DES. APP.	TR-180 Ø
						SRG	MC	Ø
						DB	ad	

THE CONTENTS OF THIS DRAWING ARE THE EXCLUSIVE PROPERTY OF THE TECHNICAL MATERIEL CORP. ITS UNAUTHORIZED USE FOR REPRODUCTION IN WHOLE OR IN PART IS STRICTLY FORBIDDEN.

REQ. PER UNIT

12

USED ON

MODEL

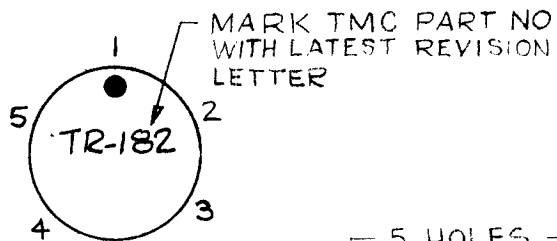
VLR-1

ASS'Y. NO.

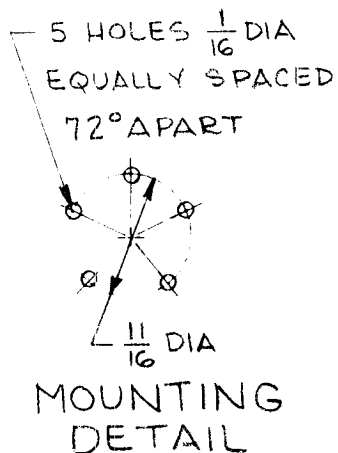
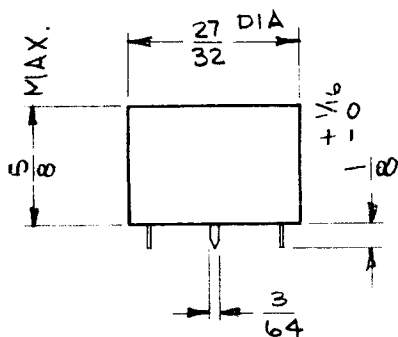
DATE

6-13-63

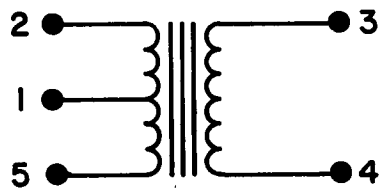
TR-182



MARK TMC PART NO WITH LATEST REVISION LETTER



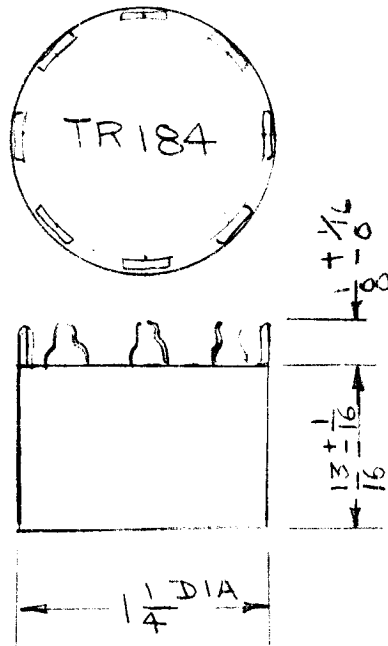
- ~ TRANSFORMER - R.F. ~
- 1 ~ IMPEDANCE DATA:
 A ~ INPUT IMPEDANCE ~ 2.2K Ω C.T.
 B ~ OUTPUT IMPEDANCE ~ 10K Ω
- 2 ~ OPERATING FREQ. RANGE ~ 5 KC TO 100 KC.
 3 ~ FREQ RESPONSE OVER FREQ RANGE ~ ± 1.5 db.
 4 ~ AVERAGE POWER RATING ~ NOT RATED.
- 5 ~ CASE DATA:
 A ~ MATERIAL - POTTED PER TMC GL128-6
 B ~ HERMETICALLY SEALED
 C ~ FINISH - BLUE
 6 ~ TERMINALS ~ 5 STAKED P.C. LUGS.



SCHEMATIC DIAGRAM

REQ. ITEM	PART NO.	M. GELLMAN	DESCRIPTION	SYMBOL
	#		THE TECHNICAL MATERIEL CORP. MAMARONECK, NEW YORK	
	STOCK SIZE		TRANSFORMER, R.F., IMPEDANCE MATCHING (FIXED)	
0	ORIGINAL RELEASE FOR PRODUCTION	6-1-64	A.M. @ MS	SEE SPEC 5A
	MATERIAL			
	TYPE & TEMPER			
	HEAT TREAT. SPEC.			
	FINISH & SPEC. NO.			
UNLESS OTHERWISE SPECIFIED DIMENSIONS ARE IN INCHES AND INCLUDE CHEMICALLY APPLIED OR PLATED FINISHES		SCALE	NONE	
DECIMALS .X $\pm .05$.XX $\pm .01$.XXX $\pm .005$	TOLERANCES	FRACTIONS $\pm 1/64$ ANGLES $\pm 0^\circ 30'$	CODE A	4A-3188
				TR-182

REQ. PER UNIT	USED ON			TR 184	A
	MODEL	ASS'Y. NO.	DATE		
	LFS-1				

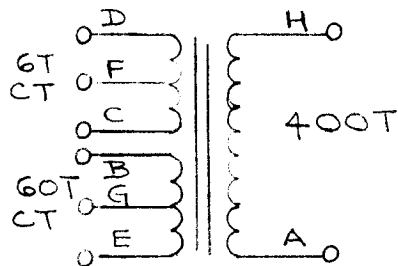


ELECTRICAL SPECIFICATIONS

PRIMARY A: 6 TURNS CT (2.4 V)
 PRIMARY B: 60 TURNS CT (24 V)
 SECONDARY: 400 TURNS (160 V)
 OPERATING FREQ. RANGE: APPROXIMATELY 5 KC
 FREQ. RESPONSE OVER FREQ. RANGE: N/A
 AVERAGE POWER RATING: 2.5W

MECHANICAL SPECIFICATIONS

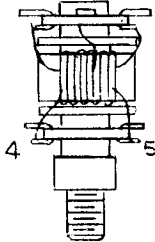
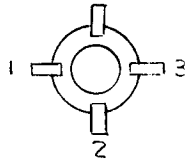
MATERIAL: POTTED PER TMC GL 128-6
 TERMINALS: 8 (LUG TYPE)
 SIZE: 1 1/4 DIA X 7/8 THICK



REQ.	ITEM	PART NO.	TO BE	DESCRIPTION	SYMBOL						
				STOCK SIZE							
A	13/16 WAS 7/8	9-7-67 18489 H.G.	GP								
Ø	ORIGINAL RELEASE FOR PRODUCTION	2/24/66									
SYM	DESCRIPTION	DATE	CH. NO.	DRAFTS	CHECKER	ENG. APP.	MATERIAL				
UNLESS OTHERWISE SPECIFIED DIMENSIONS ARE IN INCHES AND INCLUDE CHEMICALLY APPLIED OR PLATED FINISHES		SCALE		TYPE & TEMPER		HEAT TREAT. SPEC.		DRAWN	CHECKED	FINAL APPROVAL	
DECIMALS .X ± .05 .XX ± .01 .XXX ± .005	TOLERANCES	FRACTIONS ± 1/64 ANGLES ± 0° 30'	CODE	4A3508		FINISH & SPEC. NO.		ELEC. DES. APP.	MECH. DES. APP.	TR184	A

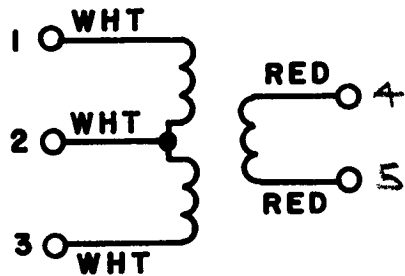
ML 28 2/23

REQ. PER UNIT	USED ON			TR186	Ø
	MODEL	ASSY. NO.	DATE		
1	CHG-3				



INDUCTANCE: NOT RATED
 DC RESISTANCE: NOT RATED
 CURRENT RATING: NOT RATED

SCHEMATIC



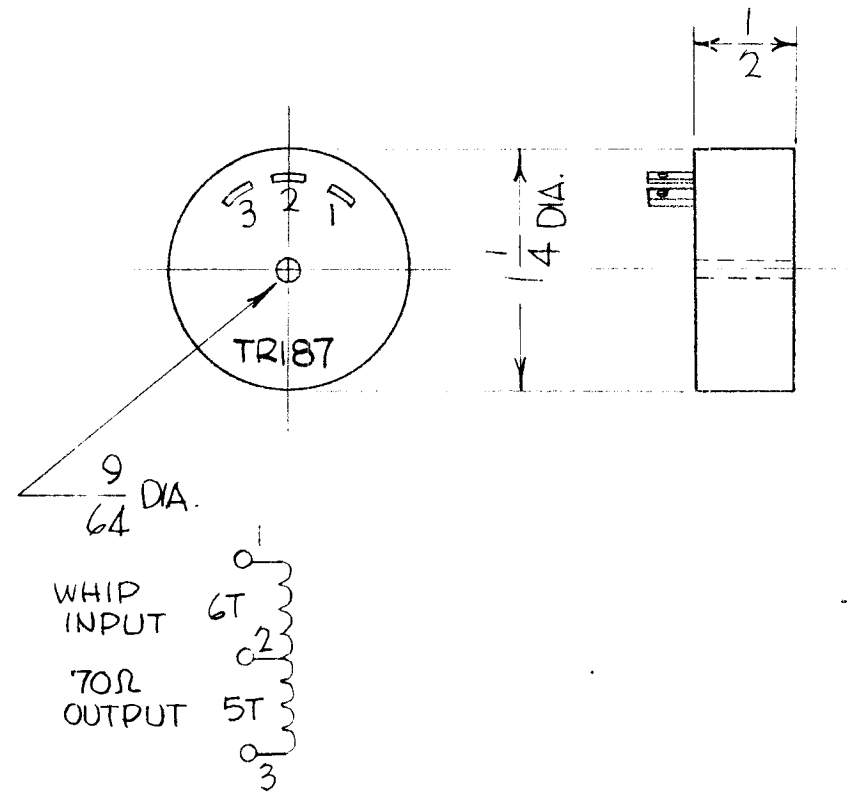
							REQ. ITEM	PART NO.	ANGER	DESCRIPTION	SYMBOL		
							STOCK SIZE		THE TECHNICAL MATERIEL CORP. MAMARONECK, NEW YORK				
							MATERIAL		TRANSFORMER, R.F.				
Ø	ORIGINAL RELEASE		10/5/65	Ø			MATERIAL						
SYM	DESCRIPTION		DATE	CH. NO.	DRAFTS	CHECKER	ENG. APP.	TYPE & TEMPER		HEAT TREAT. SPEC.	DRAWN	CHECKED	FINAL APPROVAL
UNLESS OTHERWISE SPECIFIED DIMENSIONS ARE IN INCHES AND INCLUDE CHEMICALLY APPLIED OR PLATED FINISHES			SCALE						J.L.	J.D.	Ø		
DECIMALS .X ± .05 .XX ± .01 .XXX ± .005		TOLERANCES		FRACTIONS ± 1/64 ANGLES ± 0° 30'		CODE		FINISH & SPEC. NO.		ELEC. DES. APP.		MECH. DES. APP.	
				4A4341								TR186	

REQ. PER UNIT	USED ON			TR187	Ø
	MODEL	ASS'Y. NO.	DATE		
1	HFD-15				

SPECIFICATIONS

Electrical:
 Input Impedance: HI Impedance
 Output Impedance: 50 - 70Ω
 Operating Freq.: 2-32 MC
 Freq. Resoinse: 2db

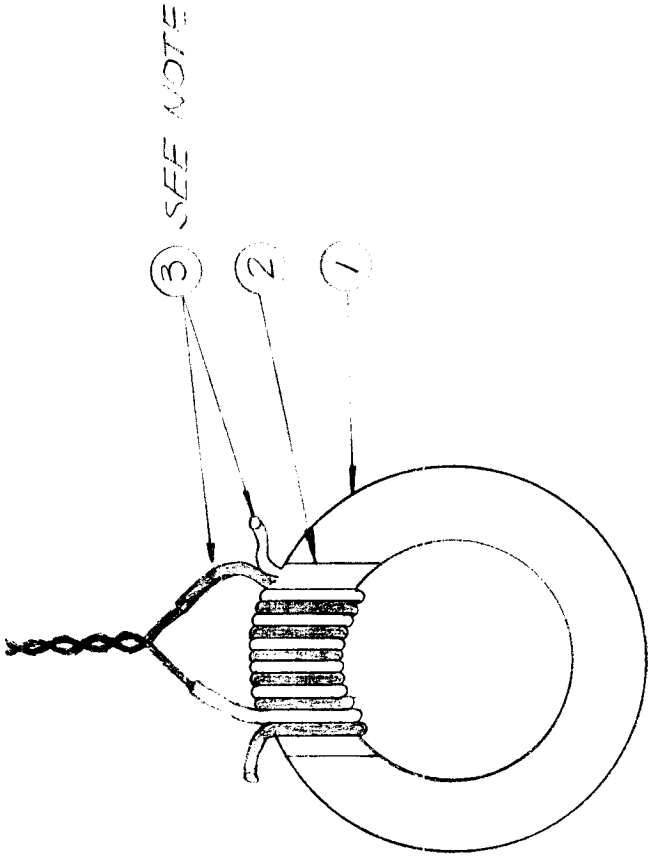
Mechanical:
 Case
 Material: Potted (per TMC GL106)
 Terminals: Solder Lug Tyoe



REQ.	ITEM	PART NO.	DESCRIPTION				SYMBOL
			THE TECHNICAL MATERIEL CORP. MAMARONECK. NEW YORK				
			STOCK SIZE				
			TRANSFORMER, R.F				
Ø			ORIGINAL RELEASE FOR PRODUCTION	1/6/66	HCA	Joa	
SYM	DESCRIPTION	DATE	CH. NO.	DRAFTS	CHECKER	ENG. APP.	MATERIAL
UNLESS OTHERWISE SPECIFIED DIMENSIONS ARE IN INCHES AND INCLUDE CHEMICALLY APPLIED OR PLATED FINISHES		SCALE					
DECIMALS .X ± .05 .XX ± .01 .XXX ± .005	TOLERANCES	FRACTIONS ± 1/64 ANGLES ± 0° 30'	CODE				
				TYPE & TEMPER		HEAT TREAT. SPEC.	DRAWN
							CHECKED
							FINAL APPROVAL
				FINISH & SPEC. NO.		ELEC. DES. APP.	MECH. DES. APP.
						JCB	TR187

APPLICATION		REVISIONS						
QTY	MODEL USED ON	ASS'Y NO.	DESCRIPTION	DATE	E.M.N.NO	DRAFT	CHKD	APPD
	FALA 10 K	AX5080	EXP RELEASE	10-20-74		GE		
			ORIG RELEASE FOR PROD	10-20-74		CV		
		A	LIGHT & DARK WIRES TIED TOGETHER	1-22-74	21210	ALL	CL	CL

NOTE: 2 WIRES (LIGHT & DARK) WIND 6
TURNS EACH CLOCKWISE (BI FILAR)



REQ'D	ITEM	PART NUMBER	DESCRIPTION	SYM.
X	4	GL-130	CUCCO	
X	3	WI-125-11	WIRE, ELEC. - MAG # 26	
X	2	TA 108-1	TAPE	
1	1	CI 115	LORE	

UNLESS OTHERWISE SPECIFIED DIMENSIONS ARE IN INCHES AND INCLUDE CHEMICALLY APPLIED OR PLATED FINISHES		LIST OF MATERIAL	
DECIMALS	FRACTIONS		
.X ± .05	1/64	FINAL APPROVAL	DATE
.XX ± .01		<i>[Signature]</i>	3/23/74
.XXX ± .005	0° - 30'	MECH. DES.	DATE
MATERIAL		ELECT. DES.	DATE
FINISH		CHECKED	DATE
		DRAWN	DATE
		<i>[Signature]</i>	3/25/74
		THE TECHNICAL MATERIEL CORP.	
		MAMARONECK, NEW YORK	
		TRANSFORMER, FIXED	

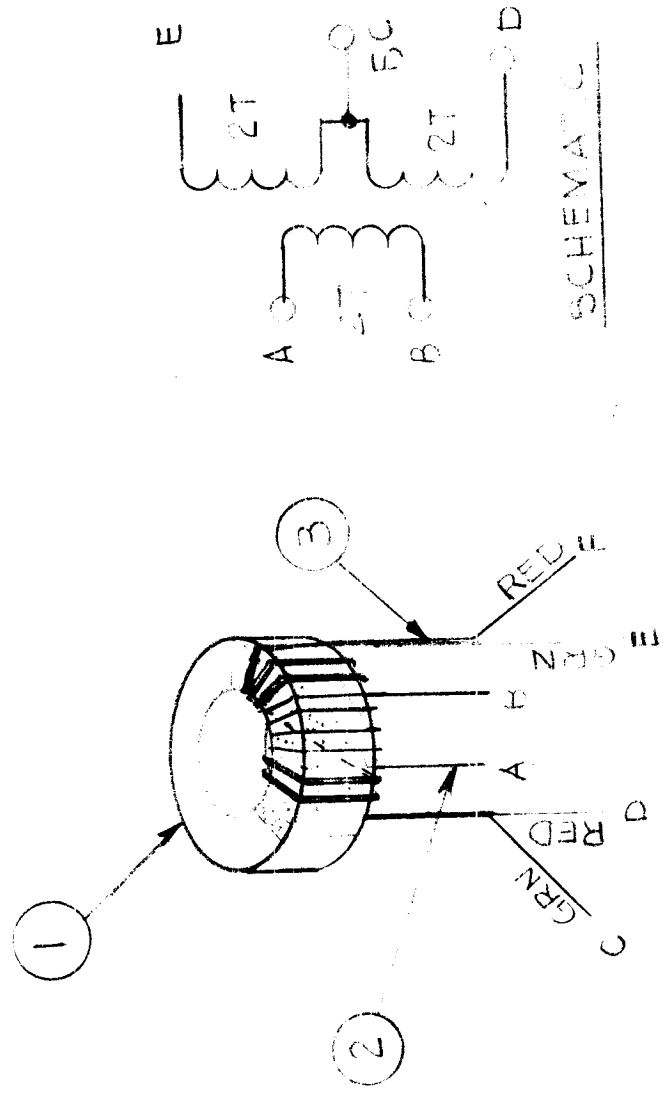
SIZE	CODE IDENT. NO.	DWG NO.	ISSUE
A	82679	TR 194	A
SCALE	SHEET	OF	
N.T.S.			

NOTICE TO PERSONS RECEIVING THIS DRAWING
THE TECHNICAL MATERIEL CORPORATION claims proprietary right in the material disclosed hereon. This drawing is issued in confidence for engineering information only and may not be reproduced or used to manufacture anything shown hereon without permission from THE TECHNICAL MATERIEL CORPORATION to the user. This drawing is loaned for mutual assistance and is subject to recall at any time.

REVISIONS

QTY	MODEL USED ON	ASS'Y NO.	LTR	DESCRIPTION	DATE	E.M.N.NO	DRAFT	CHKD	APPD
1	GPZ 110	A4953							

Original Release Mfg ~ GDL *
K 106



REQ'D	ITEM	PART NUMBER	DESCRIPTION	SYM.
X	5	GL130	ADHESIVE Q DOPE	
X	4	TA108-1	INS TAPE EL GL	
X	3	WI148-34-25	WIRE ELEC MAGNET	
X	2	WI141-28	WIRE ELEC MAGNET	
1	1	CJ127-7	CORE, TOROID	

UNLESS OTHERWISE SPECIFIED DIMENSIONS ARE IN INCHES AND INCLUDE CHEMICALLY APPLIED OR PLATED FINISHES

DECIMALS	FRACTIONS
.X ± .05	1/64
.XX ± .01	ANGLES
.XXX ± .005	0°-30°

MATERIAL

FINISH

LIST OF MATERIAL

THE TECHNICAL MATERIEL CORP.
MAMARONECK, NEW YORK

XFMR PHASE DETECTOR

FINAL APPROVAL: [Signature] DATE: 7/12/77
MECH. DES. DATE: []
ELECT. DES. DATE: []
CHECKED DATE: []
DRAWN: G. D. B. DATE: 6-27-74

NOTICE TO PERSONS RECEIVING THIS DRAWING
THE TECHNICAL MATERIEL CORPORATION claims proprietary right in the material disclosed hereon. This drawing is issued in confidence for engineering information only and may not be reproduced or used to manufacture anything shown hereon without permission from THE TECHNICAL MATERIEL CORPORATION to the user. This drawing is loaned for mutual assistance and is subject to recall at any time.

SIZE	CODE IDENT. NO.	DWG NO.	ISSUE
A	82679	TR 199	1
SCALE		SHEET	OF

