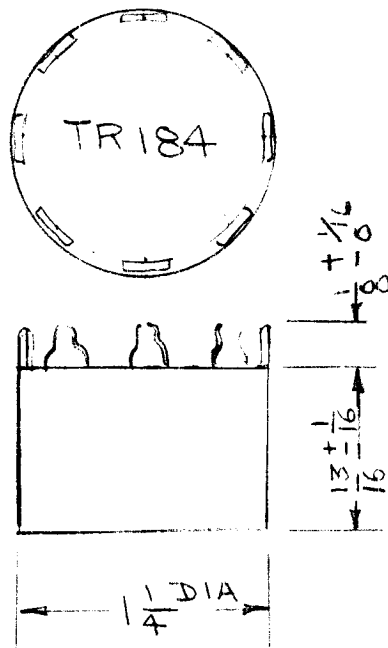


REQ. PER UNIT	USED ON			TR 184	A
	MODEL	ASS'Y. NO.	DATE		
	LFS-1				

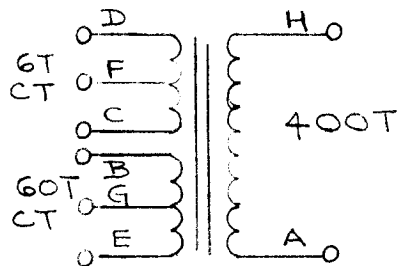


ELECTRICAL SPECIFICATIONS

PRIMARY A: 6 TURNS CT (2.4 V)
 PRIMARY B: 60 TURNS CT (24 V)
 SECONDARY: 400 TURNS (160 V)
 OPERATING FREQ. RANGE: APPROXIMATELY 5 KC
 FREQ. RESPONSE OVER FREQ. RANGE: N/A
 AVERAGE POWER RATING: 2.5W

MECHANICAL SPECIFICATIONS

MATERIAL: POTTED PER TMC GL 128-6
 TERMINALS: 8 (LUG TYPE)
 SIZE: 1 1/4 DIA X 7/8 THICK



REQ.	ITEM	PART NO.	TO BE	DESCRIPTION	SYMBOL						
				STOCK SIZE							
A	13/16 WAS 7/8	9-7-67 18489 H.G.	GP								
Ø	ORIGINAL RELEASE FOR PRODUCTION	2/24/66									
SYM	DESCRIPTION	DATE	CH. NO.	DRAFTS	CHECKER	ENG. APP.	MATERIAL				
UNLESS OTHERWISE SPECIFIED DIMENSIONS ARE IN INCHES AND INCLUDE CHEMICALLY APPLIED OR PLATED FINISHES		SCALE		TYPE & TEMPER		HEAT TREAT. SPEC.		DRAWN	CHECKED	FINAL APPROVAL	
DECIMALS .X ± .05 .XX ± .01 .XXX ± .005	TOLERANCES	FRACTIONS ± 1/64 ANGLES ± 0° 30'	CODE	4A3508		FINISH & SPEC. NO.		ELEC. DES. APP.	MECH. DES. APP.	TR 184	A