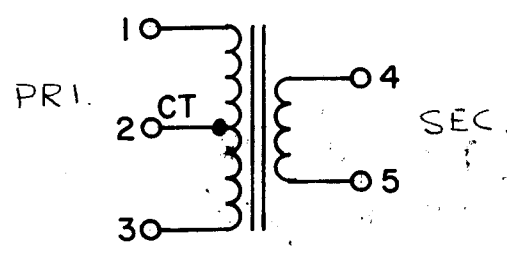
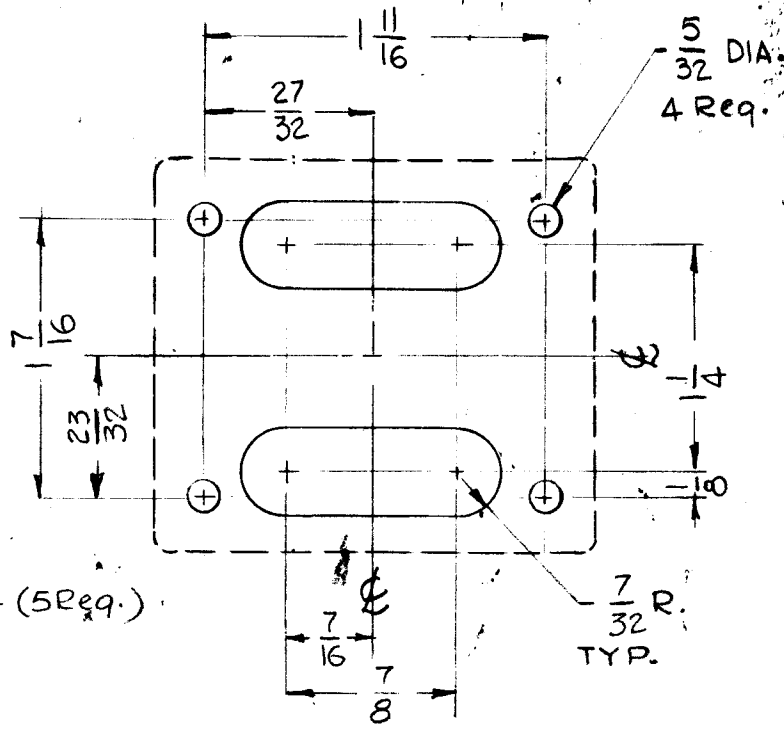
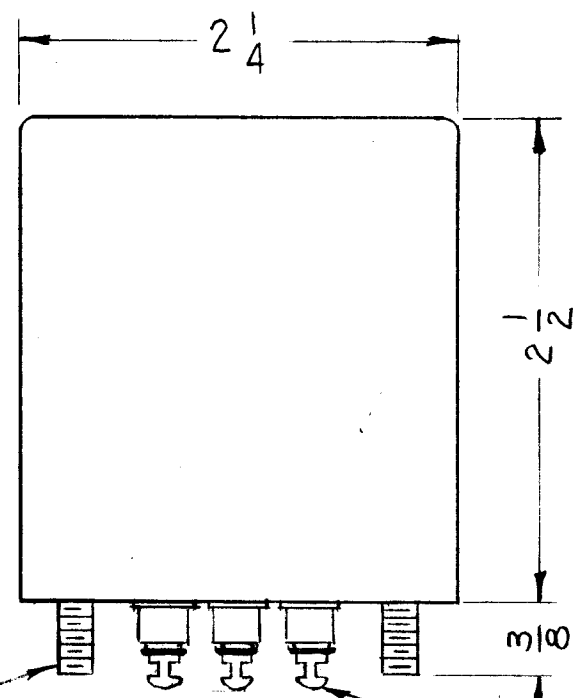


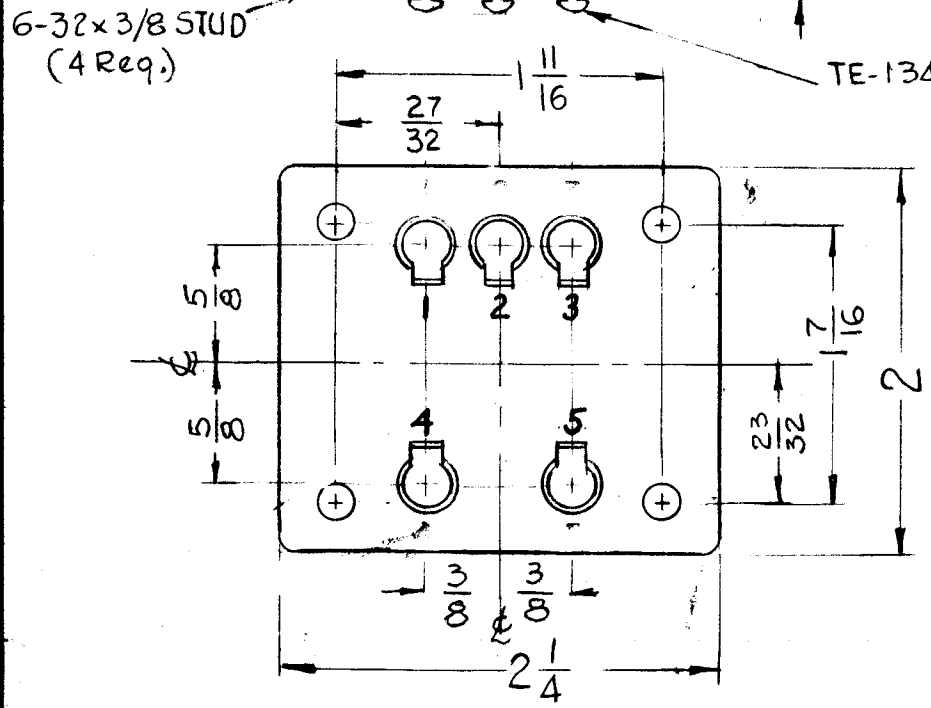
STAMP TMC & PART NO.  
ON APPROX. CENTERS  
AS SHOWN 1/8 BLACK GOTHIC



SCHEMATIC DIAGRAM



MOUNTING DIMENSIONS



TR-181 A

REVISIONS						
SYM	DESCRIPTION	DATE	E.M.N. NO.	DRAFT	CHKD	APPD
A	SEE EMN#10895 FOR CHANGES	2/18/64	10895	AM	TR	

**SPECIFICATIONS**

**TYPE:** OUTPUT

**DC RATING:** PRIMARY - 60 MA., 55 OHMS APPROXIMATELY  
SECONDARY - NONE

**MAXIMUM AUDIO OPERATING LEVEL:** 10 WATTS

**TURNS RATIO, PRIMARY TO SECONDARY:** 14:1

**FREQUENCY DATA:** FREQUENCY RANGE - 5 KC TO 600 KC  
FLAT +1.5 db

**IMPEDANCE DATA:** INPUT IMPEDANCE - 10K BALANCED  
OUTPUT IMPEDANCE - 50 OHMS

**CASE DATA:** TYPE - FULLY INCLOSED, HERMETICALLY SEALED  
MATERIAL - STEEL  
FINISH - TMC GRAY (S-115)

**TERMINAL DATA:** QUANTITY - 5  
TYPE - STANDOFF SOLDER STUD

REQ'D.	ITEM	PART NUMBER	DESCRIPTION	SYMBOL
O. POSE LIST OF MATERIAL				
MATERIAL			THE TECHNICAL MATERIEL CORP. MAMARONECK, NEW YORK	
FINISH			TITLE TRANSFORMER, OUTPUT	
UNLESS OTHERWISE SPECIFIED DIMENSIONS ARE IN INCHES AND INCLUDE CHEMICALLY APPLIED OR PLATED FINISHES			DRAWN G.D.L. DATE 5-20-63 CHECKED J.W. DATE 6-6-63 ELECT. DES. DATE MECH. DES. DATE	FINAL APPROVAL YFH DATE 6-14-63 TR-181 A SHEET REV. LTR.
DECIMALS .X ± .05 .XX ± .01 .XXX ± .005			FRACTIONS ± 1/64 ANGLES ± 0° 30'	
TOLERANCES				

1	LFA-4	ASS'Y. NO.
Q'TY./UNIT	MODEL USED ON	
SCALE FULL	CODE	4A-3170
THE CONTENTS OF THIS DRAWING ARE THE EXCLUSIVE PROPERTY OF THE TECHNICAL MATERIEL CORP. ITS UNAUTHORIZED USE OR REPRODUCTION IN WHOLE OR IN PART IS STRICTLY FORBIDDEN.		