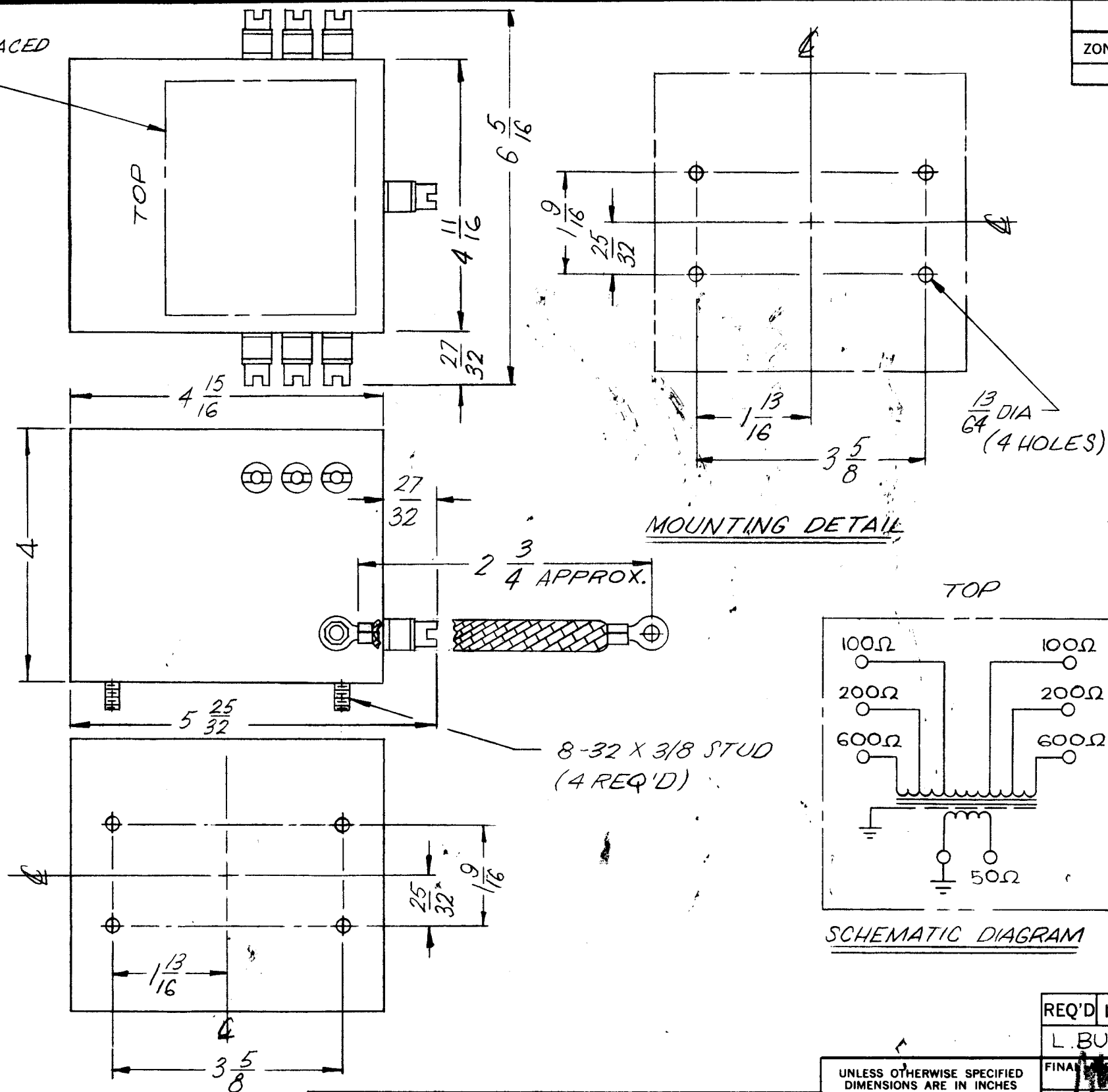


SCHEMATIC PLACED AS SHOWN



REVISIONS							
ZONE	LTR	DESCRIPTION	DATE	E.M.N.NO	DRAFT	CHKD	APPD
	C	COMPLETELY REVISED & REDRAWN	4-24-67	18130			RH

IMPEDANCE DATA

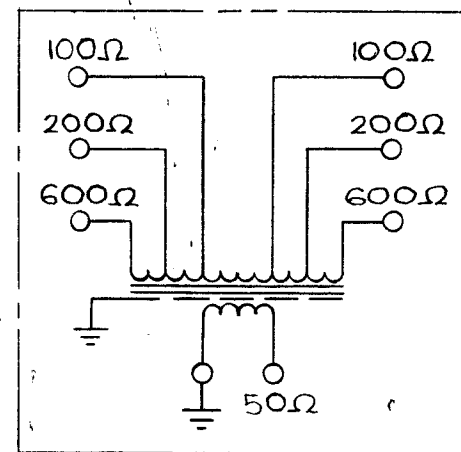
INPUT IMP: 50Ω UNBALANCED
 OUTPUT IMP: 100, 200, 600Ω BALANCED
 OPERATING FREQ RANGE: 2-28 Mc
 FREQ RESPONSE OVER FREQ RANGE:
 INSERTION LOSS LESS THAN 1dB OVER FREQ RANGE
 AVERAGE POWER RATING: 500 WATTS

CASE DATA:

MATERIAL: STEEL
 HERMETICALLY SEALED
 FINISH: S115 (SMOOTH GRAY ENAMEL)

SCHEMATIC:

SEE TOP VIEW OF COUPLER CASE



SCHEMATIC DIAGRAM

1	TRC-500-504/COOB	A 1218-2
QTY / UNIT	MODEL USED ON	ASS'Y NO.
APPLICATION		
	CODE	8A4577

NOTICE TO PERSONS RECEIVING THIS DRAWING
 THE TECHNICAL MATERIEL CORPORATION claims proprietary right in the material disclosed hereon. This drawing is issued in confidence for engineering information only and may not be reproduced or used to manufacture anything shown hereon without permission from THE TECHNICAL MATERIEL CORPORATION to the user. This drawing is loaned for mutual assistance and is subject to recall at any time.

UNLESS OTHERWISE SPECIFIED DIMENSIONS ARE IN INCHES AND INCLUDE CHEMICALLY APPLIED OR PLATED FINISHES

DECIMALS .X ± .05 .XX ± .01 .XXX ± .005
 FRACTIONS 1/64 ANGLES 0° .30'

MATERIAL SEE NOTES
 FINISH SEE NOTES

REQ'D	ITEM	PART NUMBER	DESCRIPTION	SYM.
L. BUTLER LIST OF MATERIAL				
THE TECHNICAL MATERIEL CORP. MAMARONECK, NEW YORK				
COUPLER, TRANSMISSION LINE				
SIZE	CODE IDENT. NO.	DWG NO.	ISSUE	
B	82679	TR162	C	
SCALE	SHEET		OF	