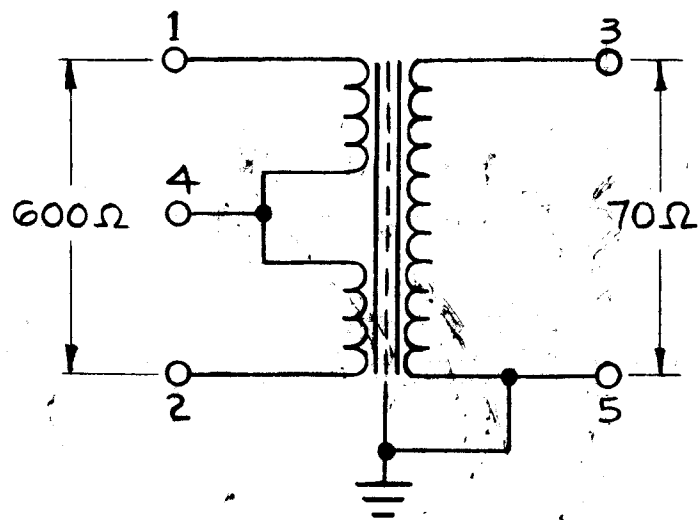
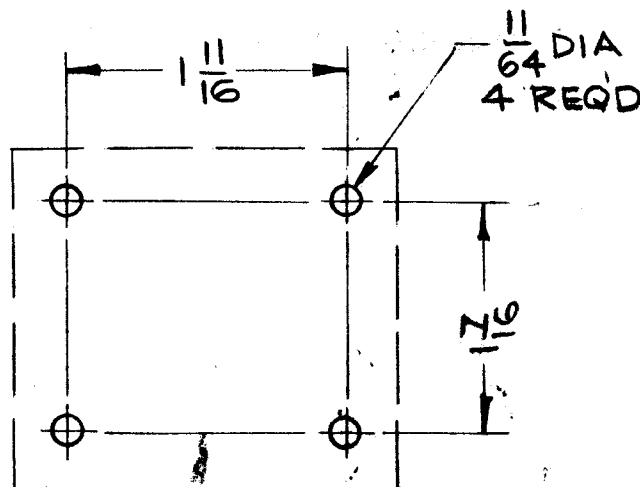
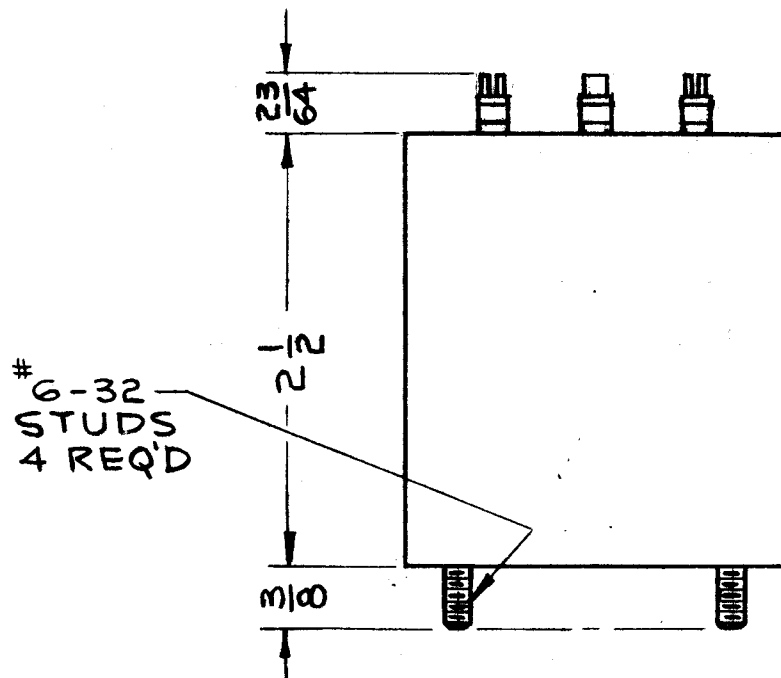


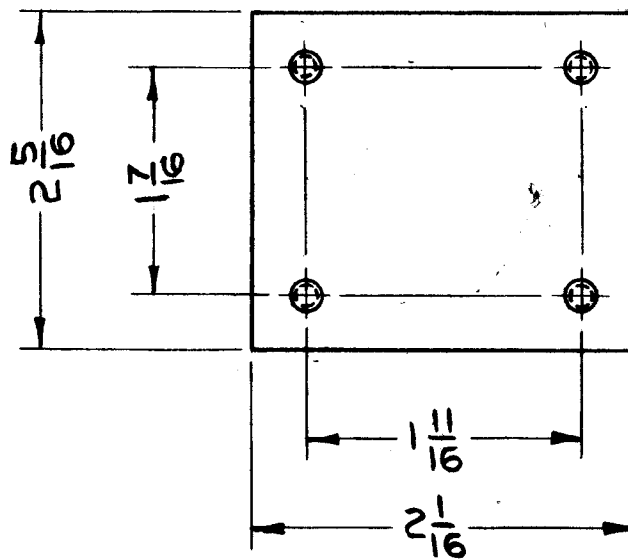
SCHMATIC DIAGRAM



TR-155



DRILLING PLAN



SPECIFICATIONS

- IMPEDANCE DATA:**
 A. INPUT IMPEDANCE - 600 OHMS BALANCED
 B. OUTPUT IMPEDANCE - 70 OHMS UNBALANCED
- OPERATING FREQUENCY RANGE:** 2-30 MCS.
- FREQUENCY RESPONSE OVER FREQUENCY RANGE:** WITHIN 1.5 db.
- AVERAGE POWER RATING:** NOT RATED; RECEIVING APPLICATION
- CASE DATA:**
 A. MATERIAL - STEEL
 B. HERMETICALLY SEALED AND POTTED
 C. FINISH - S-115 SMOOTH GRAY ENAMEL

REVISIONS					
SYM	DESCRIPTION	DATE	E.M.N. NO.	DRAFT	CHKD APPD

REQ'D.	ITEM	PART NUMBER	DESCRIPTION	SYMBOL
--------	------	-------------	-------------	--------

PRITCHARD		LIST OF MATERIAL		
MATERIAL SEE SPECS		THE TECHNICAL MATERIEL CORP. MAMARONECK, NEW YORK		
FINISH		TITLE TRANSFORMER, RF		

HLC-3		ASS'Y. NO.
Q'TY./UNIT	MODEL USED ON	ASS'Y. NO.
SCALE	CODE	4A-10280

UNLESS OTHERWISE SPECIFIED DIMENSIONS ARE IN INCHES AND INCLUDE CHEMICALLY APPLIED OR PLATED FINISHES		DRAWN <i>Mr</i>	DATE 1-18-63	FINAL APPROVAL <i>YFH</i>	DATE 5-10-63
DECIMALS .X ± .05 .XX ± .01 .XXX ± .005		CHECKED <i>Jude</i>	DATE 1-28-63	TR-155	
FRACTIONS ± 1/64 ANGLES ± 0° 30'		ELECT. DES. <i>Jh</i>	DATE 4/13/63	SHEET	
TOLERANCES		MECH. DES.	DATE	REV. LTR.	

NOTES

THE CONTENTS OF THIS DRAWING ARE THE EXCLUSIVE PROPERTY OF THE TECHNICAL MATERIEL CORP. ITS UNAUTHORIZED USE OR REPRODUCTION IN WHOLE OR IN PART IS STRICTLY FORBIDDEN.