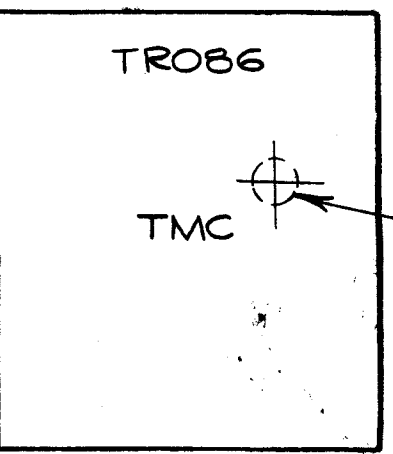


IF IT IS FOUND DESIRABLE TO CHANGE ANY TOLERANCE OR OTHER DETAIL SPECIFIED ON THIS DRAWING NOTIFY THE PURCHASER PROMPTLY.

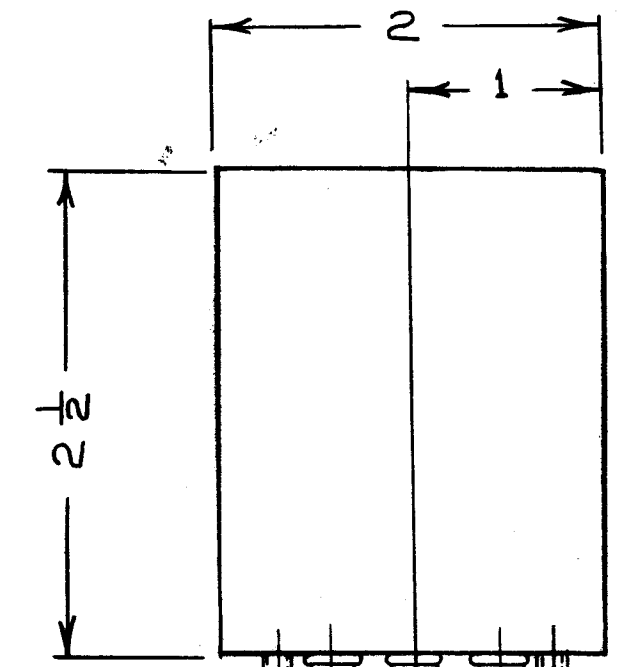
MAXIMUM ALLOWABLE TOLERANCES HAVE BEEN DETERMINED AND DEVIATIONS WILL BE CAUSE FOR REJECTION. REMOVE ALL BURRS AND SHARP EDGES

TRO86 A



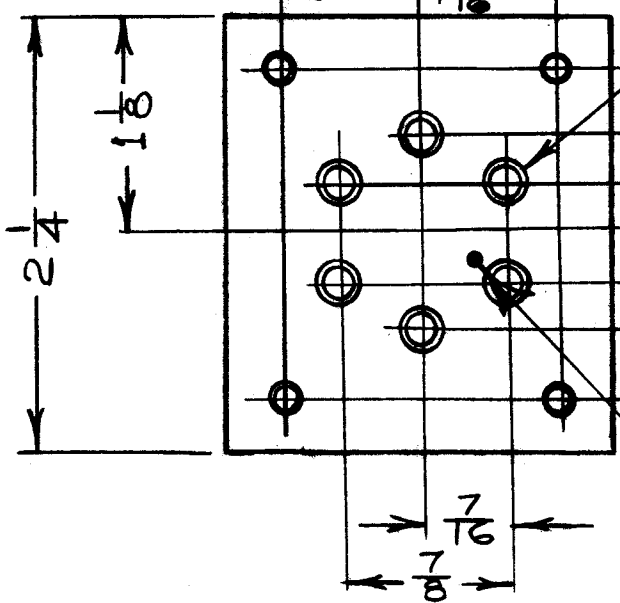
STAMPING
1/8" HIGH BLACK
AS SHOWN

TERMINAL #1
(BLACK DOT)

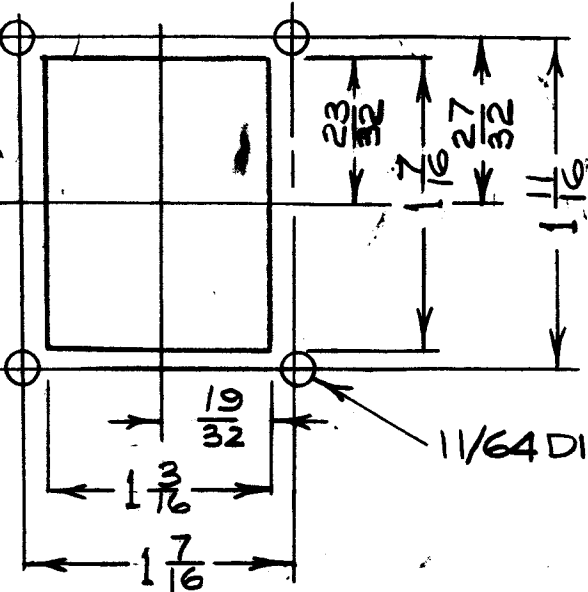


6-32 X 3/8 LG. STUDS(4)

TERMINALS-
TE-101-1 (6)



BLACK
DOT



1/64 DIA. 4 HOLES.

MTG DIM'S

TRO-86
ELECTRICAL SPECIFICATIONS
FREQ. RANGE-0.1-2 MC/S.
PRIMARY: TERMINAL(S):GND.
—— " —— 6:60Ω UNBALANCED
SECONDARY: —— " —— 2#5: CENTER-
TAPPED.
—— " —— 3#4: 60Ω BALANCED
EITHER SIDE

MECHANICAL SPECIFICATIONS
LENGTH: 2-1/4"
WIDTH: 2"
HEIGHT: 2-1/2" (EXCLUDING TERMINALS)
NO TERMINALS: 6 CERAMIC TURRET TYPE
MOUNTING: (4) 6-32 X 3/8" STUDS.
FINISH: TMC GREY (S-115)

NOTICE TO PERSONS RECEIVING THIS DRAWING

THE TECHNICAL MATERIEL CORPORATION claims proprietary right in the material disclosed hereon. This drawing is issued in confidence for engineering information only and may not be reproduced or used to manufacture anything shown hereon without permission from THE TECHNICAL MATERIEL CORPORATION to the user. This drawing is loaned for mutual assistance and is subject to recall at any time.

Property of:
THE TECHNICAL MATERIEL CORPORATION
MAMARONECK, NEW YORK

REQ.	ITEM	PART NO.	DESCRIPTION	SYMBOL
			TMC (Canada) LIMITED OTTAWA ONTARIO	
			XFMR-INPUT	
			BROADBAND	
		JPC	<i>M. W.</i>	<i>M. W.</i>
		DRAWN	ELEC. DES. APP.	MECH. DES. APP.
		CHECKED	FINAL APPROVAL	
			TRO86 A	
			FINISH & SPEC. NO.	

A	ASS'Y. NO. WAS A10274	DEC 13/60	JPC	<i>M. W.</i>
ISSUE	ITEM	CHANGED FROM	DATE	CN. NO. DRAFTS
			CHECKER	ENG. APP.
TOLERANCES		SCALE: N.T.S.		
ALL OTHERS	DEC. DIM. ± FRAC. DIM. ± ANGULAR DIM. ±	DRILL, PUNCH, COMMERCIAL STOCK SIZES AND MANUFACTURERS TOLERANCES ARE NOT INCLUDED.		

DA-101	CE5107	A10294	NOV. 17/60
MODEL	PROJECT NO.	ASS'Y. NO.	DATE
USED ON			