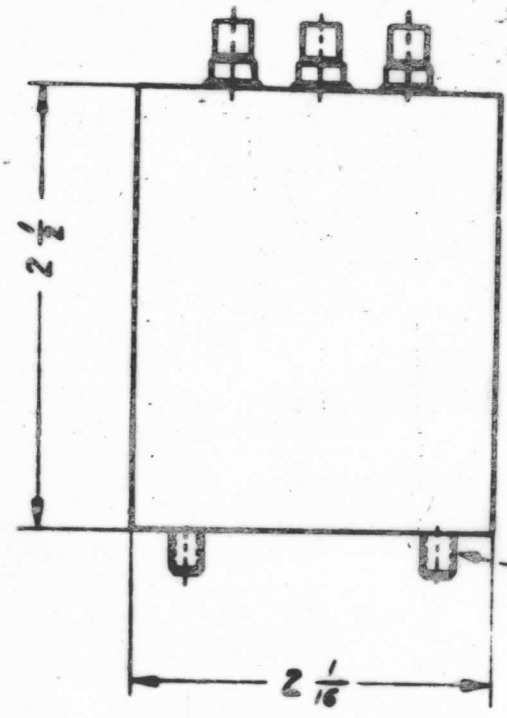


IF IT IS FOUND NECESSARY TO CHANGE ANY DIMENSIONS OR OTHER DATA SPECIFIED ON THIS DRAWING NOTIFY THE PURCHASER IMMEDIATELY

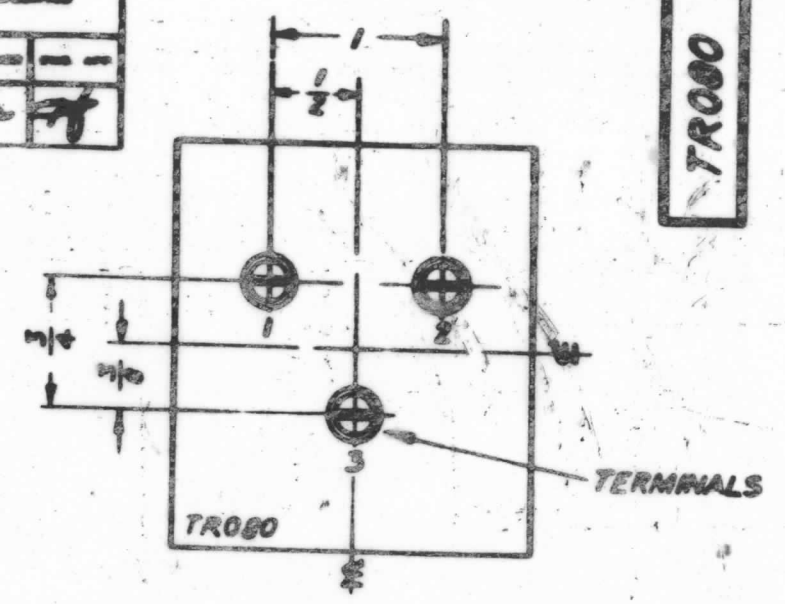
DESIGNED DIMENSIONS HAVE BEEN DETERMINED AND APPROVED WILL BE GOOD FOR REVISION UNLESS ALL OTHERS ARE SHOWN OTHERWISE

REV	FOR	CHANGED FOR	DATE	BY	CHKD	APP'D
A		162 TERMINALS CHANGED ON SCHEMATIC	2/16	RR		

TRO80

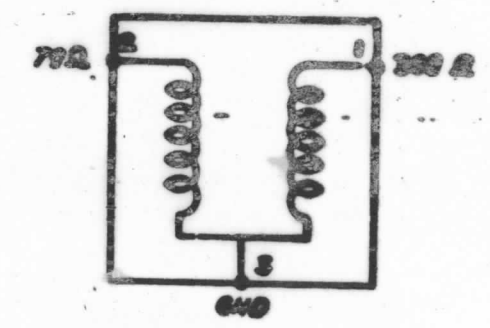


6/32 x 1/4 LB. STUDS (4)



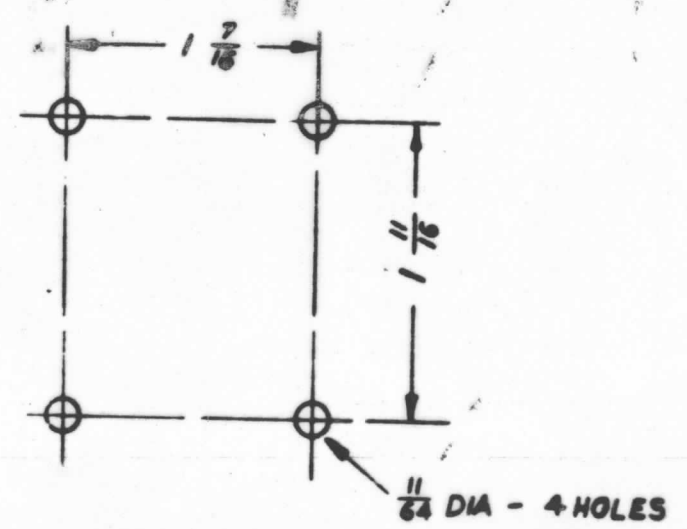
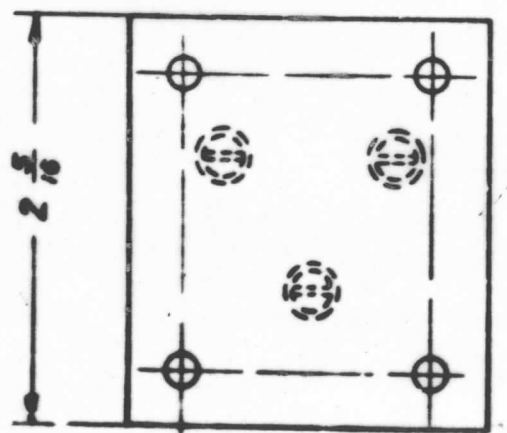
TERMINALS

**ELECTRICAL SPECIFICATIONS**  
 FREQ. RANGE 100 Mc - 30 Mc



**MECHANICAL SPECIFICATIONS**

- LENGTH: 2 - 5/16"
- WIDTH: 2 - 1/16"
- HEIGHT: 2 - 1/2" (EXCLUDING TERMINALS)
- NO. TERMINALS: 3 CERAMIC TURRET TYPE
- MOUNTING: (4) 6-32 x 1/4" STUDS
- FINISH: TMC GREY (S-115)



MTG DIM'S

TMC (Canada) LIMITED OTTAWA ONTARIO	
XFMR - INPUT	
BROADBAND - RF	
NO. OF	REV.
DATE	DATE
GROUP	DATE
TRO80	

DESIGN NO. 1164	SCALE 1:1	MODEL VRA-11	PROJECT NO. 026/65	REV. NO. A10349	DATE 1-7-65
ALL DIMENSIONS IN INCHES UNLESS OTHERWISE SPECIFIED	USE SAE UNITS	USED ON			