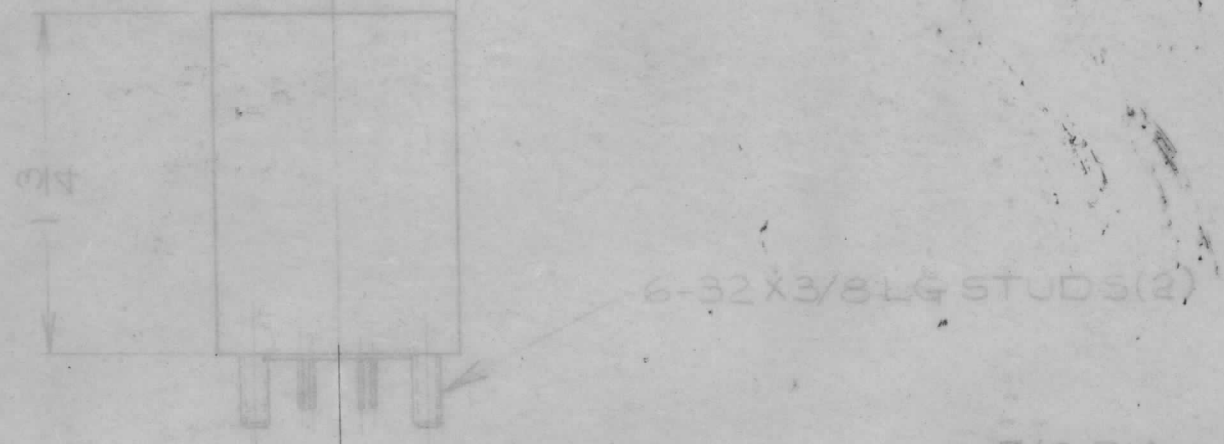


IF IT IS FOUND NECESSARY TO CHANGE ANY TOLERANCE OR OTHER DETAIL SPECIFIED ON THIS DRAWING NOTIFY THE PURCHASER IMMEDIATELY
 MAXIMUM ALLOWABLE DEVIANCES HAVE BEEN DETERMINED AND DEVIATIONS WILL BE CAUSE FOR REJECTION
 REMOVE ALL BURRS AND SHARP EDGES

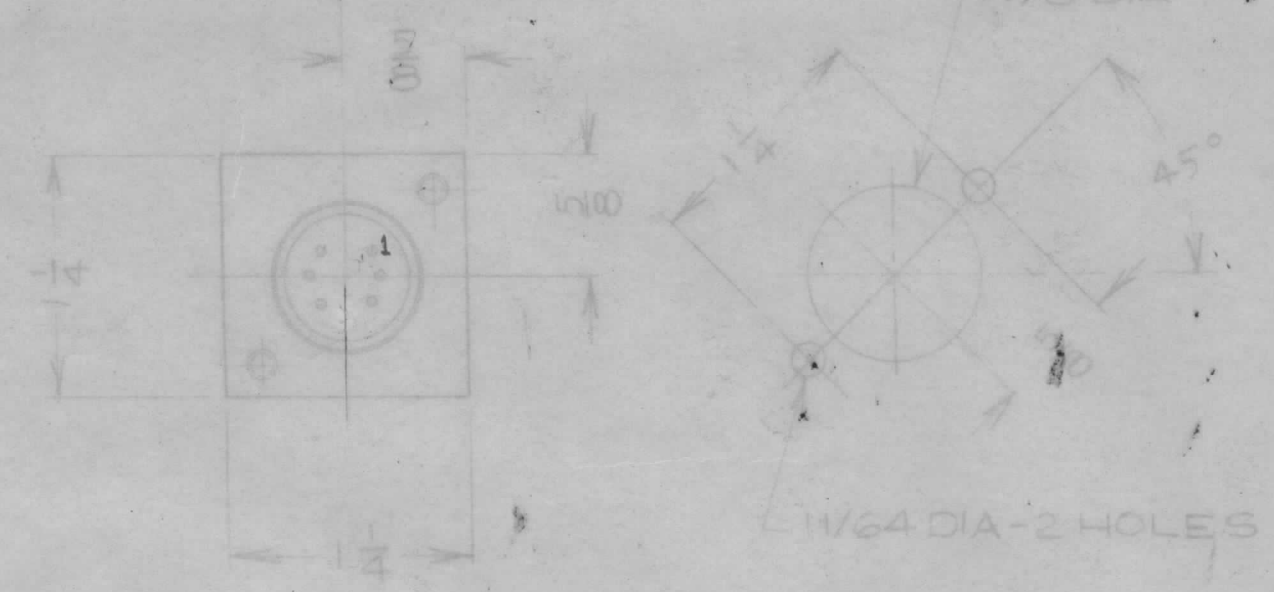
TRO78 A

TMC
 TR 078
 01502

STAMPING: 1/8" HIGH,
 BLACK AS SHOWN



6-32 X 3/8 LG STUDS (2)



MTG. DIM'S

TRO78
ELECTRICAL SPECIFICATIONS
 FREQ. RANGE: 2-30 Mc/s
 PRIMARY: TERMINAL(S) 5 & 7: 1000 Ω EITHER SIDE BALANCED
 SECONDARY: _____ " _____ 6: B+
 _____ " _____ 1: GND.
 _____ " _____ 3: 70 Ω UNBALANCED

MECHANICAL SPECIFICATIONS
 LENGTH: 1-1/4"
 WIDTH: 1-1/4"
 HEIGHT: 1-3/4"
 TERMINALS: STD 7 PIN PLUG-IN TYPE
 MOUNTING: (2) 6-32 X 3/8" STUDS.
 FINISH: TMC GREY (S-115)

REQ	ITEM	PART NO.	DESCRIPTION	SYMBOL
			TMC (Canada) LIMITED OTTAWA ONTARIO	
			XFMR-OUTPUT	
			DCM	

A	1	RELOCATED STAMPING	8-9-62	7025	MJT	<i>[Signature]</i>	<i>[Signature]</i>
ISSUE	ITEM	CHANGED FROM	DATE	CH. NO.	DRAFTS	CHECKER	ENG. APP.
TOLERANCES		SCALE: 4-A-10182					
ALL OTHERS	DEC. DIM.	1/64	DRILL PUNCH COMMERCIAL STOCK				
	FRAC. DIM.		SIZES AND MANUFACTURERS				
	ANGULAR DIM.		TOLERANCES ARE NOT INCLUDED				

AMCG-5 CE646 A-10182 JAN 19/60

TRO78 A