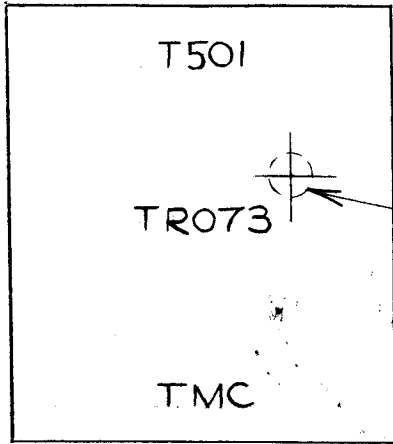


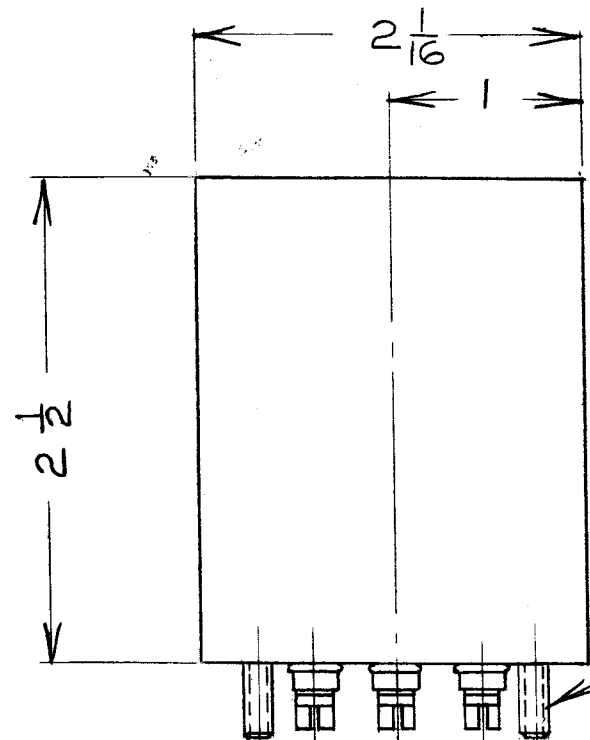
IF IT IS FOUND DESIRABLE TO CHANGE ANY TOLERANCE OR OTHER DETAIL SPECIFIED ON THIS DRAWING NOTIFY THE PURCHASER PROMPTLY.

MAXIMUM ALLOWABLE TOLERANCES HAVE BEEN DETERMINED AND DEVIATIONS WILL BE CAUSE FOR REJECTION. REMOVE ALL BURRS AND SHARP EDGES

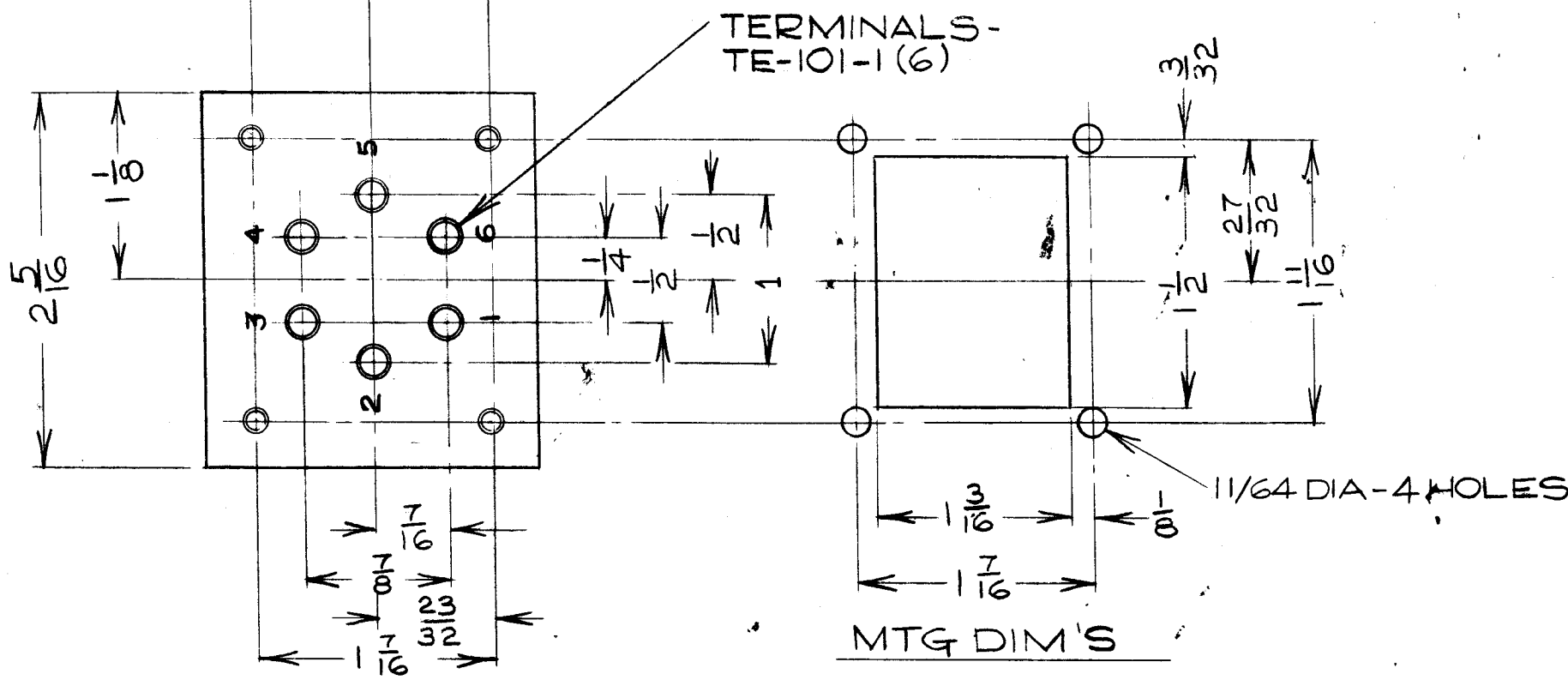
TRO73



STAMPING
1/8" HIGH, BLACK
AS SHOWN



6-32 X 3/8 LG. STUDS(4)



TERMINALS -
TE-101-1 (6)

1/16 DIA - 4 HOLES

MTG DIM'S

TRO-73
ELECTRICAL SPECIFICATIONS
FREQ. RANGE - 2-30 Mc/s.
PRIMARY: TERMINAL(S): GND
" " " " 6: 70 Ω UNBALANCED
SECONDARY: " " " " 2&5: CENTER - TAPPED
" " " " 3&4: 60 Ω BALANCED EITHER SIDE

MECHANICAL SPECIFICATIONS
LENGTH: 2-5/16"
WIDTH: 2-1/16"
HEIGHT: 2-1/2" (EXCLUDING TERMINALS)
NO TERMINALS: 6 CERAMIC TURRET TYPE
MOUNTING: (4) 6-32 X 3/8" STUDS.
FINISH: TMC GREY (S-115)

REQ.	ITEM	PART NO.	DESCRIPTION	SYMBOL
			TMC (Canada) LIMITED OTTAWA ONTARIO	
		STOCK SIZE	XFMR-INPUT	
		MATERIAL	BROADBAND-RF	
		WEIGHT PER PC.	DCM	
		TYPE & TEMPER	DRAWN	ELEC. DES. APP. MECH. DES. APP.
		HEAT TREAT. SPEC.	CHECKED	FINAL APPROVAL
		FINISH & SPEC. NO.	TRO73	

ISSUE	ITEM	CHANGED FROM	DATE	CN. NO.	DRAFTS	CHECKER	ENG. APP.
TOLERANCES							
DEC. DIM. ±				SCALE: 1:1			
FRAC. DIM. ± 1/64				DRILL, PUNCH, COMMERCIAL STOCK			
ANGULAR DIM. ±				SIZES AND MANUFACTURERS			
				TOLERANCES ARE NOT INCLUDED.			

AMC6-5 CEG46 A10200 JAN 19/60
MODEL PROJECT NO. ASS'Y. NO. DATE
USED ON