

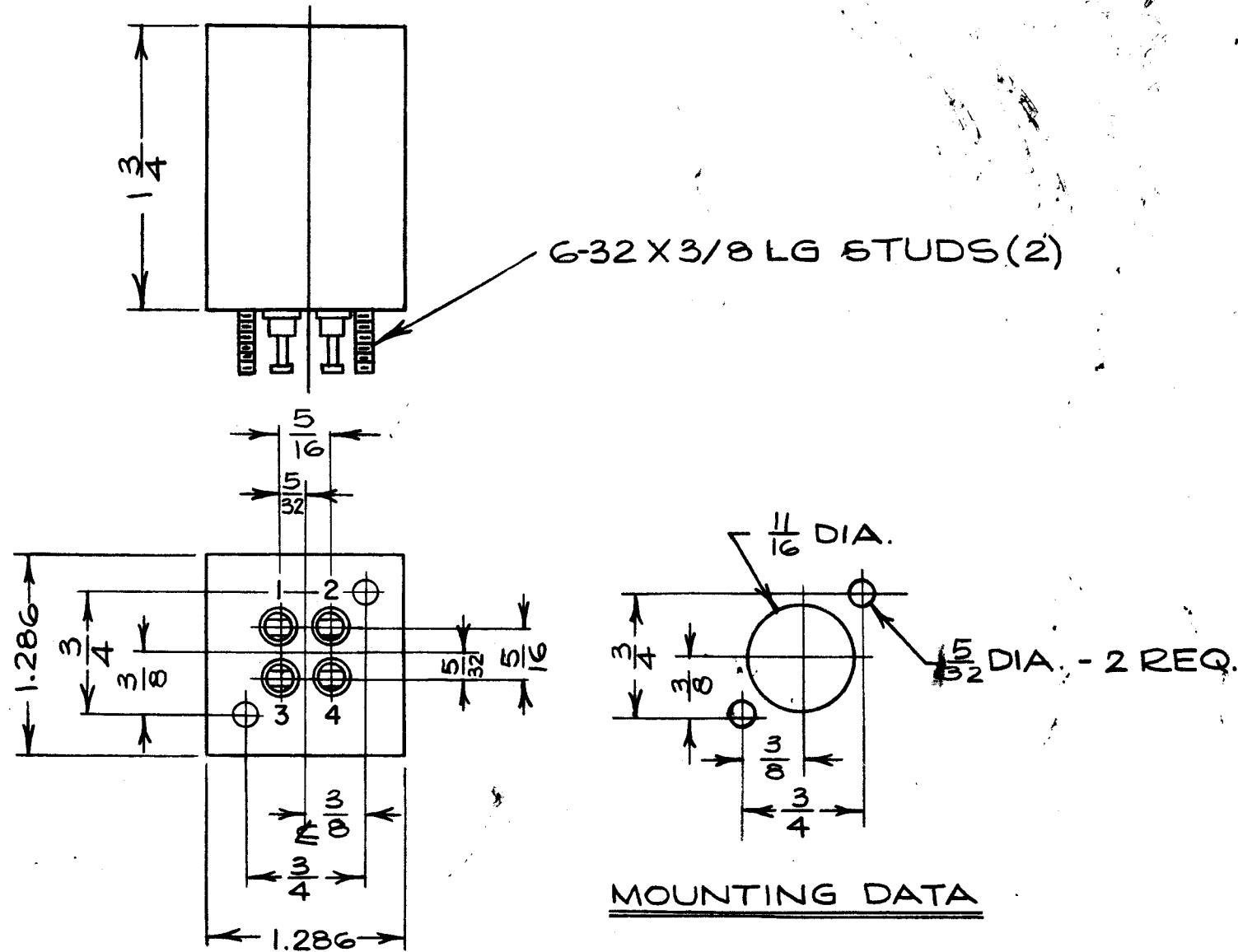
IF IT IS FOUND DESIRABLE TO CHANGE ANY TOLERANCE OR OTHER DETAIL SPECIFIED ON THIS DRAWING NOTIFY THE PURCHASER PROMPTLY.

MAXIMUM ALLOWABLE TOLERANCES HAVE BEEN DETERMINED AND DEVIATIONS WILL BE CAUSE FOR REJECTION. REMOVE ALL BURRS AND SHARP EDGES

TRO71

TRO71  
TMC

STAMPING: 1/8" HIGH, BLACK AS SHOWN.



TRO71  
ELECTRICAL SPECIFICATIONS  
FREQ. RANGE: 2-30 MC/S.  
PRIMARY: TERMINAL 1 : 75Ω UNBALANCED  
          "      2 : GROUND  
SECONDARY: "      3 : 400Ω UNBALANCED  
              "      4 : GROUND

MECHANICAL SPECIFICATIONS  
LENGTH: 1.286"  
WIDTH: 1.286"  
HEIGHT: 1.750"  
TERMINALS: CERAMIC  
MOUNTING: (2) 6-32 X 3/8" STUDS  
FINISH: TMC GREY (S-115)

MOUNTING DATA

REQ.	ITEM	PART NO.	DESCRIPTION	SYMBOL
			TMC (Canada) LIMITED OTTAWA ONTARIO	
			TRANSFORMER	
			JPC	
			DRAWN	
			CHECKED	
			FINAL APPROVAL	
			TRO71	

ISSUE	ITEM	CHANGED FROM	DATE	CN. NO.	DRAFTS	CHECKER	ENG. APP.
TOLERANCES							
SCALE: 4A-10296							
DRILL, RUNCH, COMMERCIAL STOCK SIZES AND MANUFACTURERS TOLERANCES ARE NOT INCLUDED.							

BAA-1	PROJECT NO.	ASS'Y. NO.	DATE
			15/12/60
USED ON			