

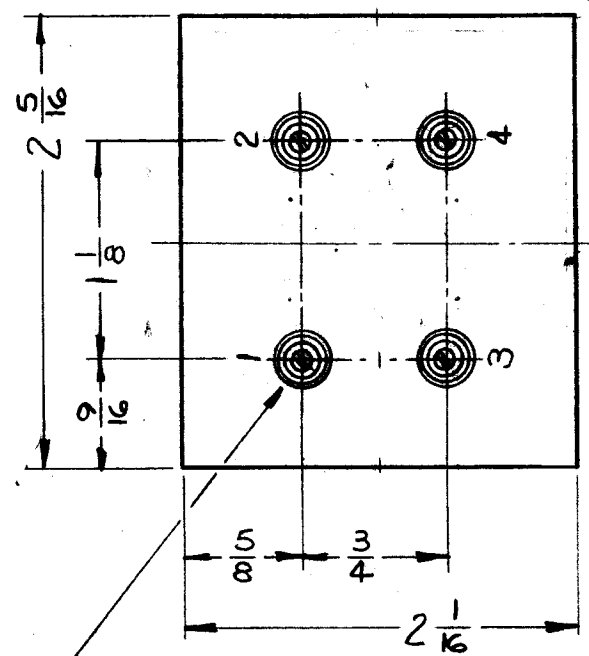
IF IT IS FOUND DESIRABLE TO CHANGE ANY TOLERANCE OR OTHER DETAIL SPECIFIED ON THIS DRAWING NOTIFY THE PURCHASER PROMPTLY.

MAXIMUM ALLOWABLE TOLERANCES HAVE BEEN DETERMINED AND DEVIATIONS WILL BE CAUSE FOR REJECTION. REMOVE ALL BURRS AND SHARP EDGES

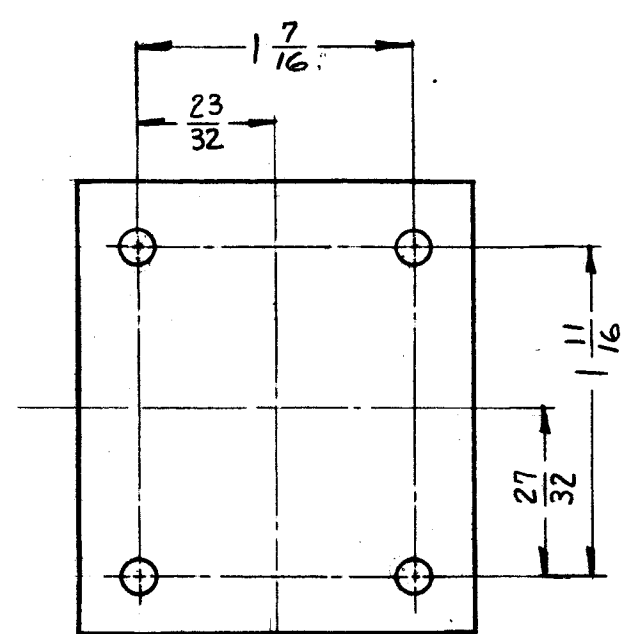
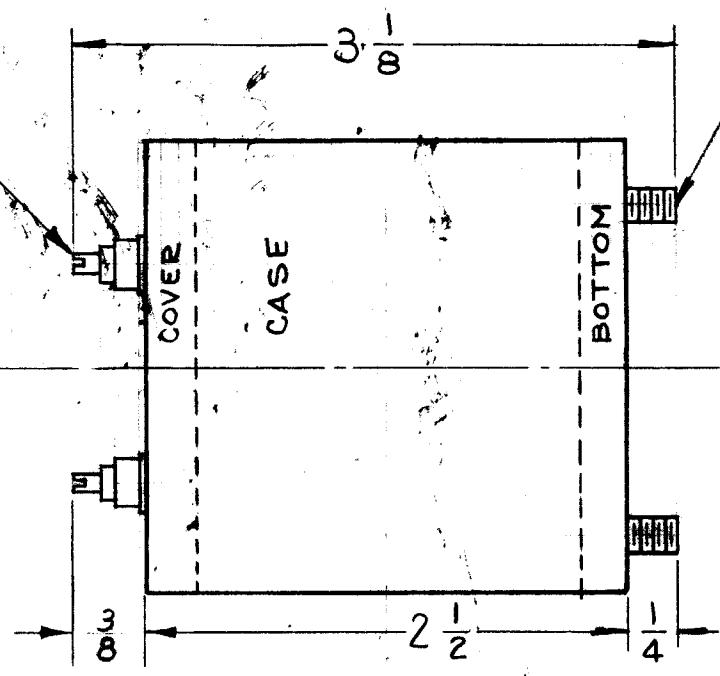
TR-069 A

TE-101-2 4-REQ.
MTG. HOLES 7/32 DIA.

6-32 x 1/4 STUDS - SINGLE END - 4-REQ.



7/32 DIA HOLES
4-REQ.



MECHANICAL SPECIFICATION

- 1 - CASE STEEL
- 2 - TERMINALS CERAMIC
- 3 - FILLER COMPOUND
- 4 - FINISH GREY
- 5 - STUDS 6-32 x 1/4

ELECTRICAL SPECIFICATION

- 1 - IMPEDANCE
INPUT 1-2 600Ω BALANCED
OUTPUT 3-4 70Ω UNBALANCED
- 2 - FREQUENCY RESPONSE
2-30 MC ± 2.5 DB

REQ.	ITEM	PART NO.	DESCRIPTION	SYMBOL
		.025	TMC (Canada) LIMITED OTTAWA ONTARIO	
		STOCK SIZE	TRANSFORMER	
		STEEL	RAC-7A	
		MATERIAL		
		WEIGHT PER PC.		
		TYPE & TEMPER		
		HEAT TREAT. SPEC.		
		ELECTRO TINNED		
		FINISH & SPEC. NO.		

ISSUE	ITEM	CHANGED FROM	DATE	CN. NO.	DRAFTS	CHECKER	ENG. APP.
A		DWG. COMPLETELY REVISED	10-31-53	7521			

TOLERANCES SCALE: AA-10076

DRILL, PUNCH, COMMERCIAL STOCK SIZES AND MANUFACTURERS TOLERANCES ARE NOT INCLUDED.

Aug. 17, 1956

MODEL	PROJECT NO.	ASS'Y. NO.	DATE

USED ON

TR-069 A