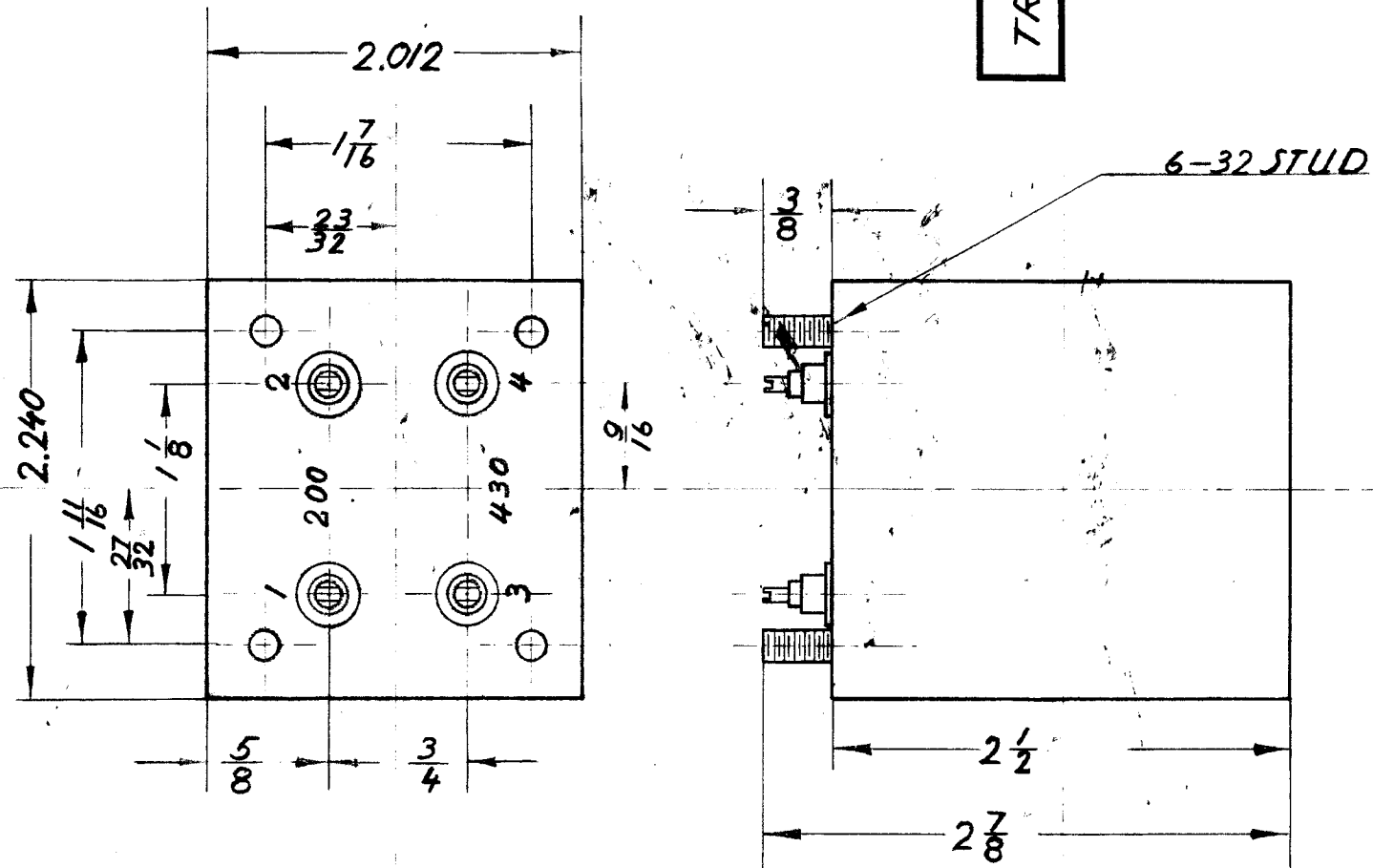


IF IT IS FOUND DESIRABLE TO CHANGE ANY TOLERANCE OR OTHER DETAIL SPECIFIED ON THIS DRAWING NOTIFY THE PURCHASER PROMPTLY.

MAXIMUM ALLOWABLE TOLERANCES HAVE BEEN DETERMINED AND DEVIATIONS WILL BE CAUSE FOR REJECTION. REMOVE ALL BURRS AND SHARP EDGES

TR-067



T M C  
TR 067

— MECHANICAL SPECIFICATIONS —

1. CASE — STEEL
2. TERMINALS — CERAMIC
3. FILLER — COMPOUND
4. FINISH — GREY
5. STUDS — 6-32 x 3/8

ELECTRICAL SPECIFICATION

1. IMPEDANCE  
INPUT 1-2, 200 Ω BALANCED  
OUTPUT 3-4, 430 Ω UNBALANCED
2. FREQUENCY RESPONSE  
2-30 MC ± 8 DB

REQ.	ITEM	PART NO.	DESCRIPTION	SYMBOL
			<b>TMC (Canada) LIMITED</b> OTTAWA ONTARIO	
			RF-TRANSFORMER	
			AMC 6-2 / 200B	
			DRAWN <i>[Signature]</i> ELEC. DES. APP. MECH. DES. APP.	
			CHECKED <i>[Signature]</i> FINAL APPROVAL	
			A-10075 TR-067	
			FINISH & SPEC. NO.	

ISSUE	ITEM	CHANGED FROM	DATE	CN. NO.	DRAFTS	CHECKER	ENG. APP.
		ORIGINAL RELEASE	8/19/56				

TOLERANCES: SCALE: FULL SIZE

ALL OTHERS: DEC. DIM. ±, FRAC. DIM. ±, ANGULAR DIM. ±

DRILL, RUNCH, COMMERCIAL STOCK SIZES AND MANUFACTURERS TOLERANCES ARE NOT INCLUDED.

AMC 6-2      A-10075      9. Aug. 1956

MODEL      PROJECT NO.      ASS'Y. NO.      DATE

USED ON