

IF IT IS FOUND DESIRABLE TO CHANGE ANY TOLERANCE OR OTHER DETAIL SPECIFIED ON THIS DRAWING NOTIFY THE PURCHASER PROMPTLY.

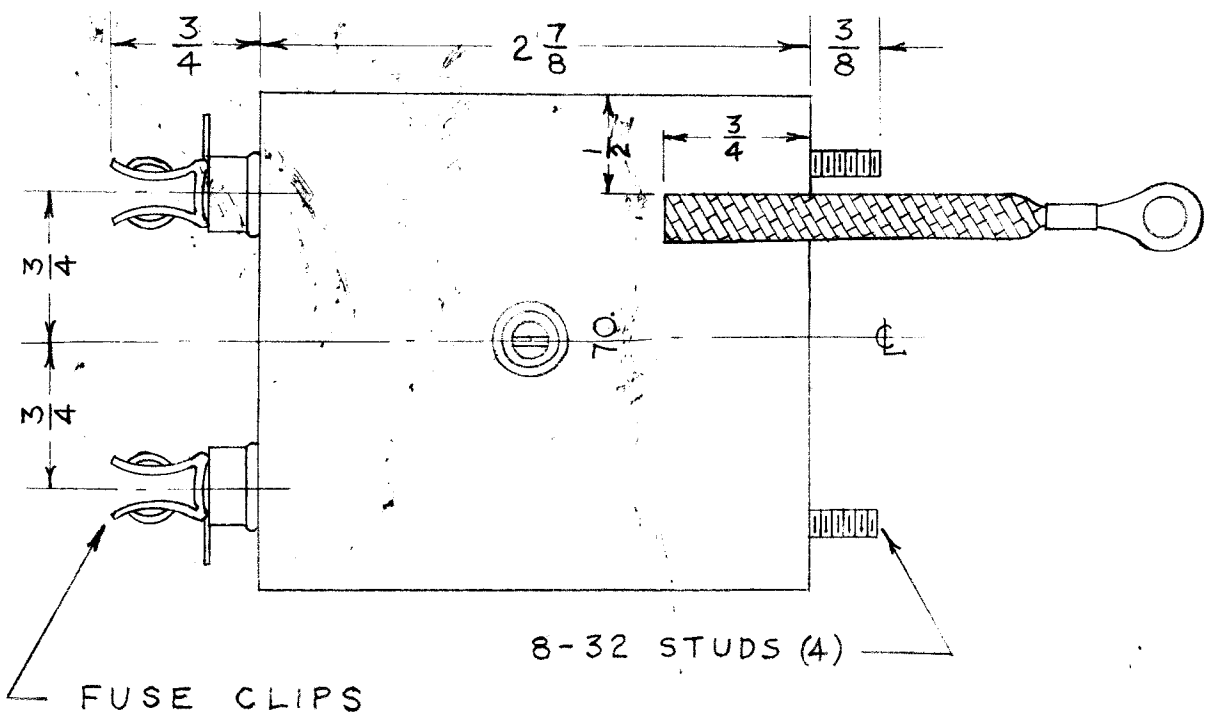
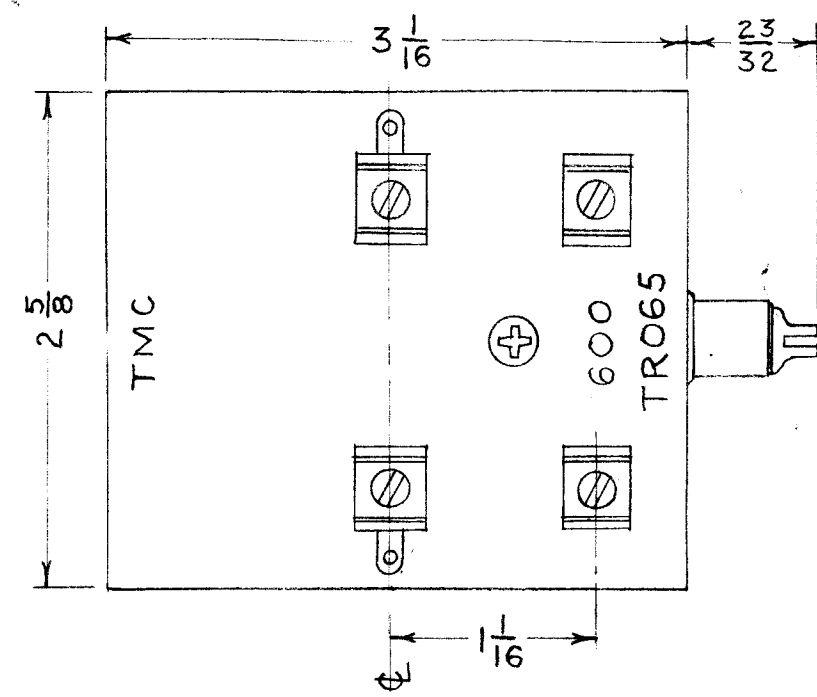
MAXIMUM ALLOWABLE TOLERANCES HAVE BEEN DETERMINED AND DEVIATIONS WILL BE CAUSE FOR REJECTION. REMOVE ALL BURRS AND SHARP EDGES.

DIMENSIONS IN INCHES UNLESS OTHERWISE SPECIFIED

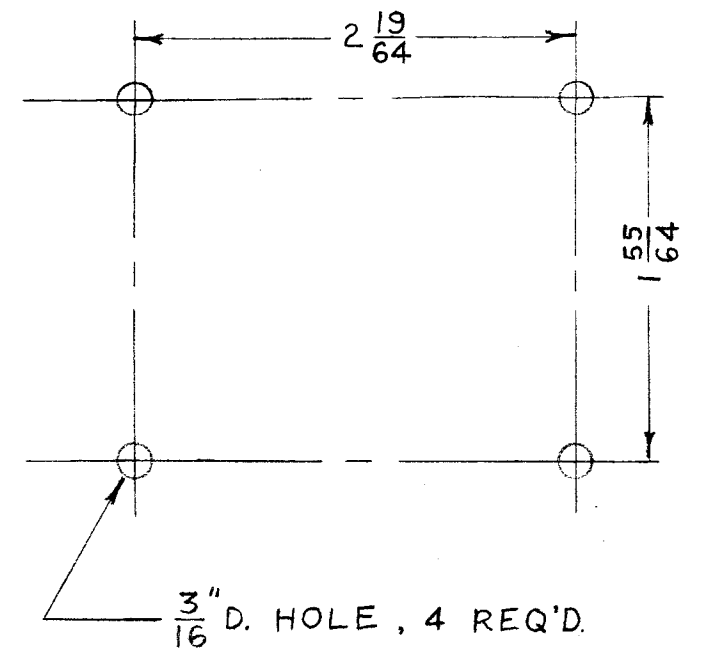
REQ.	ITEM	PART NO.	DESCRIPTION	SYMBOL
------	------	----------	-------------	--------

ISSUE	ITEM	CHANGED FROM	DATE	CN. NO.	DRAFTS	CHECKER	ENG. APP.
-------	------	--------------	------	---------	--------	---------	-----------

TR-065



MOUNTING DIM'NS



SPECIFICATIONS

1. IMPEDANCE DATA:
  - A. INPUT IMPEDANCE - 600 OHMS BALANCED
  - B. OUTPUT IMPEDANCE - 70 OHMS UNBALANCED
2. OPERATING FREQUENCY RANGE: 90-200 KCS.
3. FREQUENCY RESPONSE OVER FREQUENCY RANGE: WITHIN 3 db.
4. AVERAGE POWER RATING: NOT RATED; RECEIVING APPLICATION.
5. CASE DATA:
  - A. MATERIAL - STEEL
  - B. HERMETICALLY SEALED AND POTTED
  - C. FINISH - S-115 SMOOTH GRAY ENAMEL

STOCK SIZE		TMC (Canada) LIMITED OTTAWA ONTARIO	
MATERIAL			
WEIGHT PER PC.		90-200 KC./S	
TYPE & TEMPER		DRAWN	ELEC. DES. APP.
HEAT TREAT. SPEC.		MECH. DES. APP.	
FINISH & SPEC. NO.		CHECKED	FINAL APPROVAL

TOLERANCES		SCALE:
ALL OTHERS	DEC. DIM. ± FRAC. DIM. ± ANGULAR DIM. ±	DRILL, PUNCH, COMMERCIAL STOCK SIZES AND MANUFACTURERS TOLERANCES ARE NOT INCLUDED.

RAC-43	AX-381-	FEB. 26/63
MODEL	PROJECT NO.	ASSY. NO.
USED ON		

TR-065