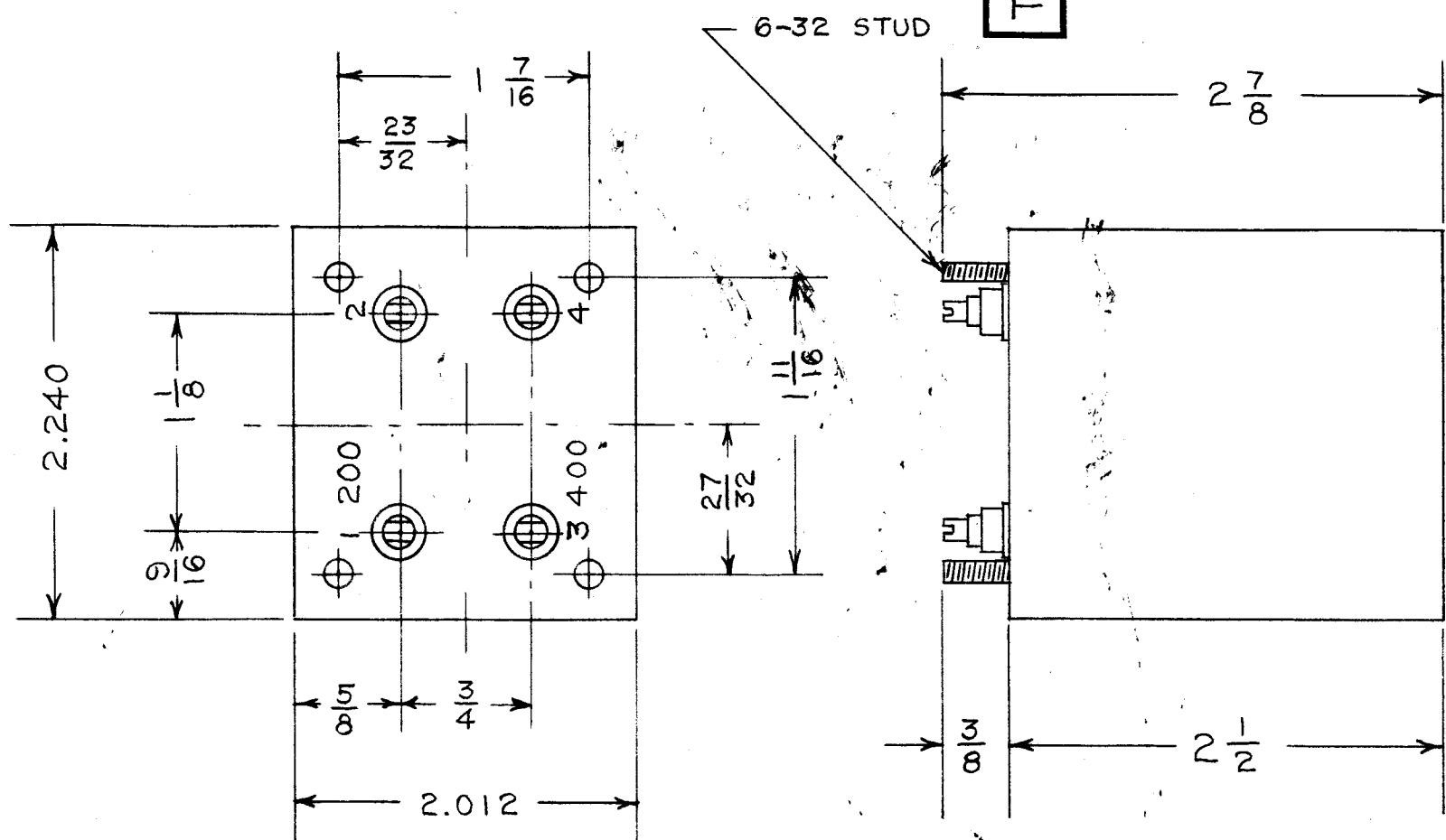


IF IT IS FOUND DESIRABLE TO CHANGE ANY TOLERANCE OR OTHER DETAIL SPECIFIED ON THIS DRAWING NOTIFY THE PURCHASER PROMPTLY.

MAXIMUM ALLOWABLE TOLERANCES HAVE BEEN DETERMINED AND DEVIATIONS WILL BE CAUSE FOR REJECTION. REMOVE ALL BURRS AND SHARP EDGES

TR-060



MECHANICAL SPECIFICATIONS -

1. - CASE - STEEL - CAD. PLATE
2. - TERMINALS - CERAMIC
3. - FILLER - COMPOUND
4. - FINISH - GREY
5. - STUDS - 6-32 x $\frac{3}{8}$

ELECTRICAL SPECIFICATIONS -

1. - IMPEDANCE
INPUT 1-2 200 Ω UNBALANCED
OUTPUT 3-4 400 Ω UNBALANCED
2. - FREQUENCY RESPONSE
2-30 MC. ± 1 DB.

ISSUE	ITEM	CHANGED FROM	DATE	CN. NO.	DRAFTS	CHECKER	ENG. APP.
TOLERANCES			SCALE: FULL SIZE				
ALL OTHERS	DEC. DIM. \pm FRAC. DIM. \pm ANGULAR DIM. \pm		DRILL, MUNCH, COMMERCIAL STOCK SIZES AND MANUFACTURERS TOLERANCES ARE NOT INCLUDED.				

AMC 6-3
AMC 6-2

MODEL	PROJECT NO.	ASS'Y. NO.	DATE

REQ.	ITEM	PART NO.	DESCRIPTION	SYMBOL
STOCK SIZE			TMC (Canada) LIMITED OTTAWA ONTARIO R.F. TRANSFORMER INPUT AMC 6-2 1/2	
MATERIAL		WEIGHT PER PC.		
TYPE & TEMPER			J.W.T.	
HEAT TREAT. SPEC.			DRAWN	ELEC. DES. APP. MECH. DES. APP.
FINISH & SPEC. NO.			CHECKED	FINAL APPROVAL
			A-10041	TR-060