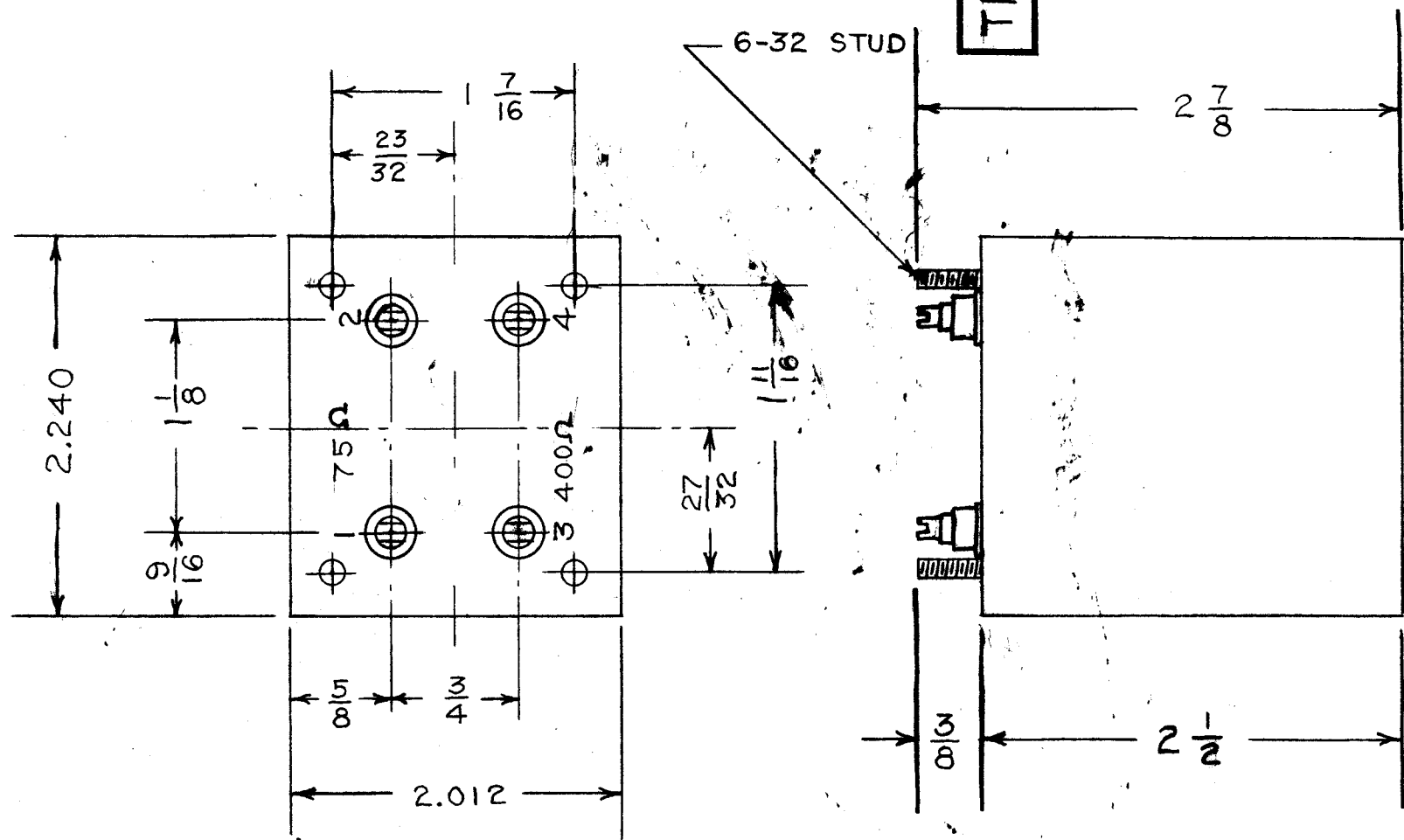


IF IT IS FOUND DESIRABLE TO CHANGE ANY TOLERANCE OR OTHER DETAIL SPECIFIED ON THIS DRAWING NOTIFY THE PURCHASER PROMPTLY.

MAXIMUM ALLOWABLE TOLERANCES HAVE BEEN DETERMINED AND DEVIATIONS WILL BE CAUSE FOR REJECTION. REMOVE ALL BURRS AND SHARP EDGES

TR-059 A



**MECHANICAL SPECIFICATIONS -**

1. - CASE - STEEL CAD. PLATE
2. - TERMINALS - CERAMIC
3. - FILLER - COMPOUND
4. - FINISH - GREY
5. - STUDS - 6-32 x  $\frac{3}{8}$

**ELECTRICAL SPECIFICATIONS -  
IMPEDANCE**

INPUT: TERMINAL #1 75Ω UNBALANCED  
 #2 GROUND.  
 OUTPUT: #3 400Ω UNBALANCED  
 #4 GROUND.

**FREQUENCY RESPONSE**

2-30Mc/s. ±1DB.

|            |   |   |                  |         |                    |         |           |
|------------|---|---|------------------|---------|--------------------|---------|-----------|
| A          | GROUND TERMINALS CLARIFIED<br>STAMPING REARRANGED | July 13 1961  | 1<br>2           | JPC     | <i>[Signature]</i> |         |           |
| ISSUE      | ITEM  | CHANGED FROM  | DATE             | CN. NO. | DRAFTS             | CHECKER | ENG. APP. |
| TOLERANCES |   |   | SCALE: FULL SIZE |         |                    |         |           |
| ALL OTHERS | DEC. DIM. ±<br>FRAC. DIM. ±<br>ANGULAR DIM. ±     | DRILL, RUNCH, COMMERCIAL STOCK SIZES AND MANUFACTURERS TOLERANCES ARE NOT INCLUDED. |                  |         |                    |         |           |

AMC 6-3  
AMC 6-2

18-6-55

|       |             |            |         |
|-------|-------------|------------|---------|
| MODEL | PROJECT NO. | ASS'Y. NO. | DATE    |
|       |             |            | 18-6-55 |

| REQ.               | ITEM | PART NO. | DESCRIPTION                                   | SYMBOL          |
|--------------------|------|----------|---|-----------------|
|                    |      |          | <b>TMC (Canada) LIMITED</b><br>OTTAWA ONTARIO |                 |
| STOCK SIZE         |      |          | R.F. TRANSFORMER                              |                 |
| MATERIAL           |      |          | INPUT AMC 6-2 & 3                             |                 |
| WEIGHT PER PC.     |      |          | J.W.T.  |                 |
| TYPE & TEMPER      |      |          | DRAWN   | ELEC. DES. APP. |
| HEAT TREAT. SPEC.  |      |          | CHECKED                                       | FINAL APPROVAL  |
| FINISH & SPEC. NO. |      |          | A-10040                                       | TR-059          |