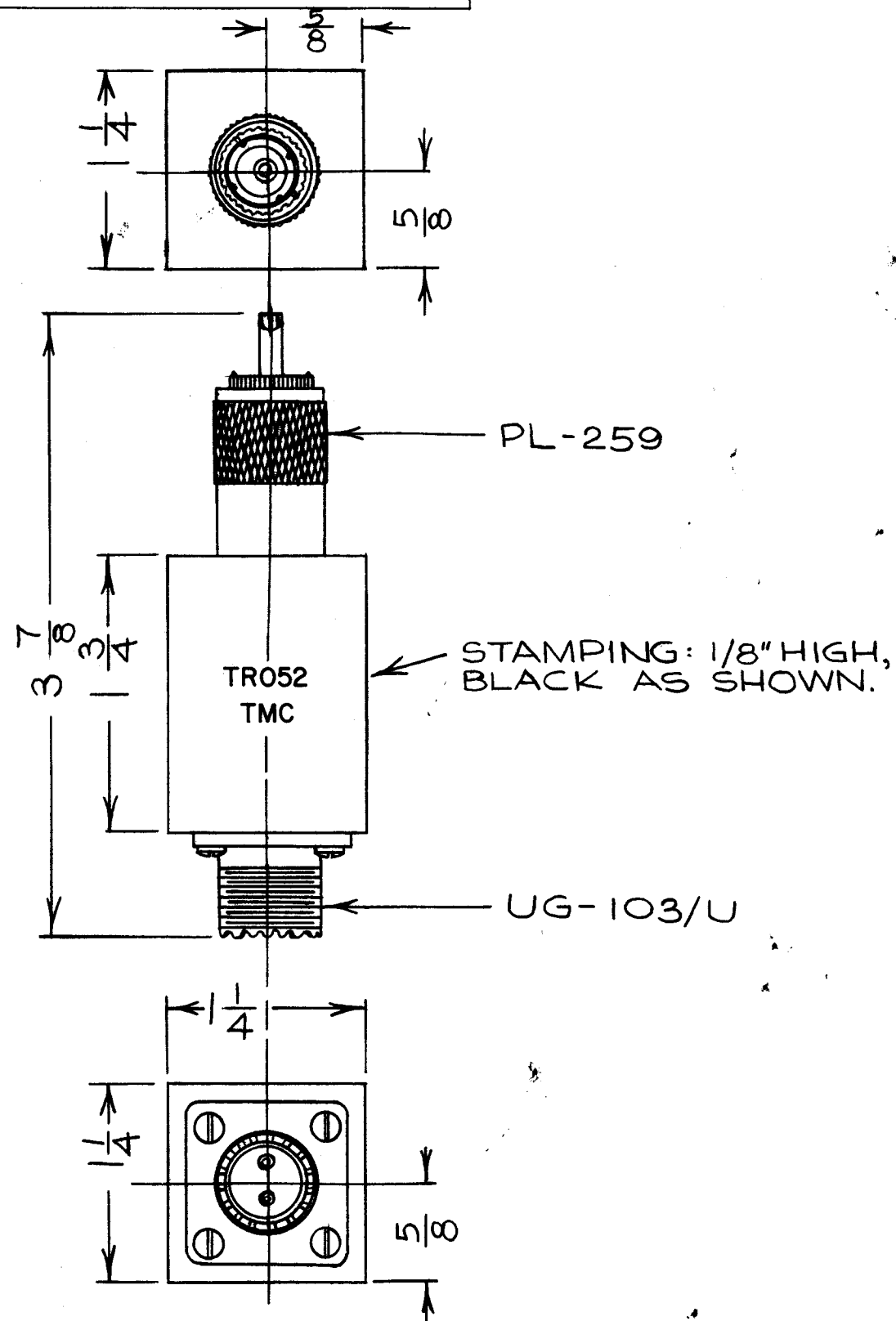


IF IT IS FOUND DESIRABLE TO CHANGE ANY TOLERANCE OR OTHER DETAIL SPECIFIED ON THIS DRAWING NOTIFY THE PURCHASER PROMPTLY.

MAXIMUM ALLOWABLE TOLERANCES HAVE BEEN DETERMINED AND DEVIATIONS WILL BE CAUSE FOR REJECTION. REMOVE ALL BURRS AND SHARP EDGES

TRO52



TRO52
ELECTRICAL SPECIFICATIONS

FREQ. RANGE: 2-30 MC/S.
PRIMARY: PL-259-70Ω UNBALANCED.
SECONDARY: UG-103/U 200Ω BALANCED

MECHANICAL SPECIFICATIONS

LENGTH: 1-1/4"
WIDTH: 1-1/4"
HIGHT: 3-7/8"
CONNECTORS-PL-259 & UG-103/U.
FINISH: TMC GREY. (S115)

REQ.	ITEM	PART NO.	DESCRIPTION	SYMBOL
			TMC (Canada) LIMITED OTTAWA ONTARIO	
		STOCK SIZE	TRANSFORMER	
		MATERIAL	WEIGHT PER PC.	BROADBAND
		TYPE & TEMPER	JPC	JPC
			DRAWN	ELEC. DES. APP. MECH. DES. APP.
		HEAT TREAT. SPEC.	CHECKED	FINAL APPROVAL
		FINISH & SPEC. NO.	TRO52	

ISSUE	ITEM	CHANGED FROM	DATE	CN. NO.	DRAFTS	CHECKER	ENG. APP.
TOLERANCES				SCALE: 1:1			
ALL OTHERS	DEC. DIM. ±	FRAC. DIM. ±	ANGULAR DIM. ±	DRILL, PUNCH, COMMERCIAL STOCK SIZES AND MANUFACTURERS TOLERANCES ARE NOT INCLUDED.			

MODEL	PROJECT NO.	ASS'Y. NO.	DATE
			3/3/61
USED ON			