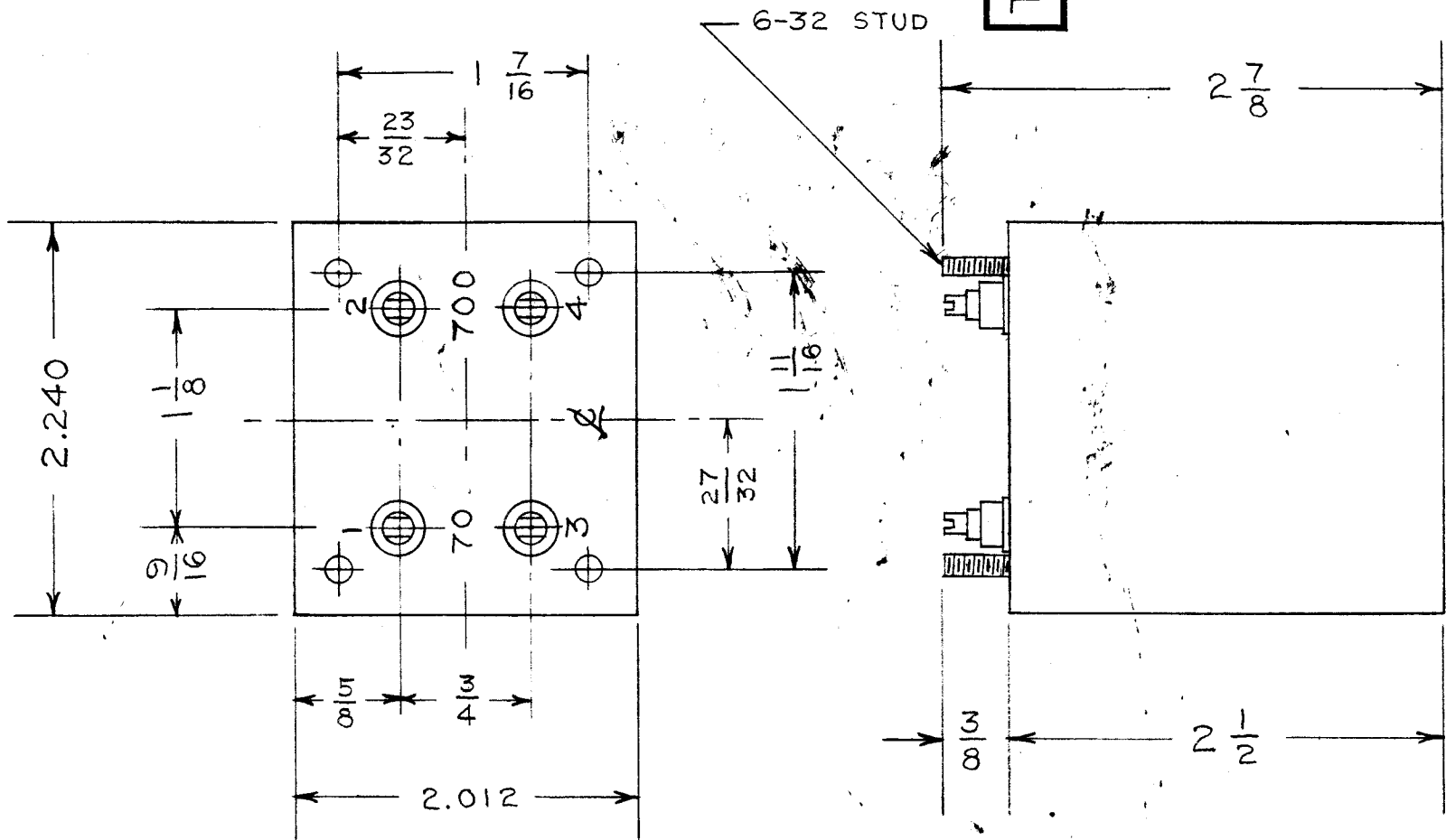


IF IT IS FOUND DESIRABLE TO CHANGE ANY TOLERANCE OR OTHER DETAIL SPECIFIED ON THIS DRAWING NOTIFY THE PURCHASER PROMPTLY.

MAXIMUM ALLOWABLE TOLERANCES HAVE BEEN DETERMINED AND DEVIATIONS WILL BE CAUSE FOR REJECTION. REMOVE ALL BURRS AND SHARP EDGES

TR-050



MECHANICAL SPECIFICATIONS -

- 1. - CASE - STEEL
- 2. - TERMINALS - CERAMIC
- 3. - FILLER - COMPOUND
- 4. - FINISH - GREY
- 5. - STUDS - 6-32 x $\frac{3}{8}$

ELECTRICAL SPECIFICATIONS -

- 1. - IMPEDANCE
INPUT 1-3 70Ω UNBALANCED
OUTPUT 2-4 700Ω UNBALANCED
- 2. - FREQUENCY RESPONSE
2-30 MC. ± DB.

REQ.	ITEM	PART NO.	DESCRIPTION	SYMBOL
			TMC (Canada) LIMITED OTTAWA ONTARIO	
		STOCK SIZE	R.F. TRANSFORMER	
		MATERIAL	INPUT AMC-6B	
		WEIGHT PER PC.	J.W.T.	
		TYPE & TEMPER	DRAWN	ELEC. DES. APP.
		HEAT TREAT. SPEC.	CHECKED	MECH. DES. APP.
		FINISH & SPEC. NO.	FINAL APPROVAL	
			A-10031	TR-050

ISSUE	ITEM	CHANGED FROM	DATE	CN. NO.	DRAFTS	CHECKER	ENG. APP.
			11/16/69				
TOLERANCES				SCALE: FULL SIZE			
ALL OTHERS	DEC. DIM. ±	FRAC. DIM. ±	ANGULAR DIM. ±	DRILL, PUNCH, COMMERCIAL STOCK SIZES AND MANUFACTURERS TOLERANCES ARE NOT INCLUDED.			

MODEL	PROJECT NO.	ASS'Y. NO.	DATE
			18-6-55
USED ON			