

IF IT IS FOUND DESIRABLE TO CHANGE ANY TOLERANCE OR OTHER DETAIL SPECIFIED ON THIS DRAWING NOTIFY THE PURCHASER PROMPTLY.

TR-031

MAXIMUM ALLOWABLE TOLERANCES HAVE BEEN DETERMINED AND DEVIATIONS WILL BE CAUSE FOR REJECTION. REMOVE ALL BURRS AND SHARP EDGES

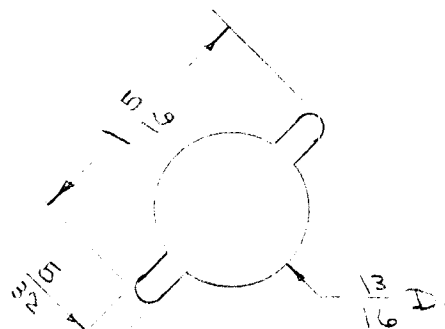
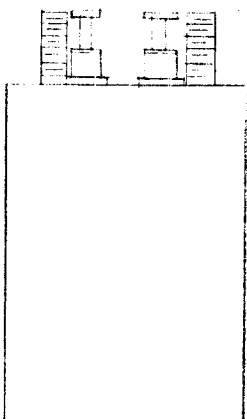
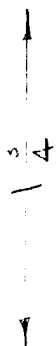
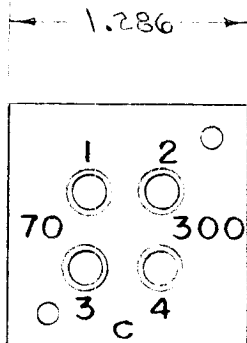
USED ON

MODEL

PROJECT NO.

ASS'Y. NO.

DATE



DRILLING PLAN

MECHANICAL SPECIFICATIONS-

1. CASE - STEEL
2. TERMINALS - CERAMIC
3. FILLER - COMPOUND
4. FINISH - GREY
5. STUDS - 6-32 X 3/8

ELECTRICAL SPECIFICATIONS-

1. INPUT - 1-3 70 Ω UNBALANCED  
OUTPUT - 2-4 300 Ω UNBALANCED
2. FREQUENCY RESPONSE -  
2 - 30 mc. ± 3 db.

TMC  
TR 031

REQ.	ITEM	PART NO.	DESCRIPTION	SYMBOL
#			THE TECHNICAL MATERIEL CORP. MAMARONECK, NEW YORK	
STOCK SIZE			TRANSFORMER	
MATERIAL		WEIGHT PER PC.	ANTENNA MATCHING	
TYPE & TEMPER			C.D.D. 5-22-53	ARB
DRAWN			ELEC. DES. APP.	MECH. DES. APP.
HEAT TREAT. SPEC.			FINAL APPROVAL	
FINISH & SPEC. NO.			2A-473	TR-031

ISSUE	ITEM	CHANGED FROM	DATE	CN. NO.	DRAFTS	CHECKER	ENG. APP.

TOLERANCES

SCALE

ALL OTHERS

DEC. DIM. ±  
FRAC. DIM. ±  
ANGULAR DIM. ±

DRILL, PUNCH, COMMERCIAL STOCK SIZES AND MANUFACTURERS TOLERANCES ARE NOT INCLUDED.