

IF IT IS FOUND DESIRABLE TO CHANGE ANY TOLERANCE OR OTHER DETAIL SPECIFIED ON THIS DRAWING NOTIFY THE PURCHASER PROMPTLY.

TR-027

MAXIMUM ALLOWABLE TOLERANCES HAVE BEEN DETERMINED AND DEVIATIONS WILL BE CAUSE FOR REJECTION. REMOVE ALL BURRS AND SHARP EDGES

USED ON

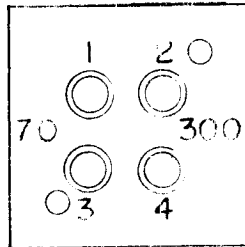
MODEL

PROJECT NO.

ASS'Y. NO.

DATE

1.286



1.286

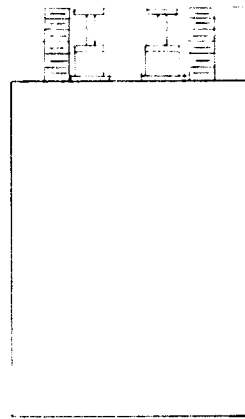
MECHANICAL SPECIFICATIONS:

1. CASE - STEEL
2. TERMINALS - CERAMIC
3. FILLER - COMPOUND
4. FINISH - GRAY
5. STUDS - 6-32 X 3/8

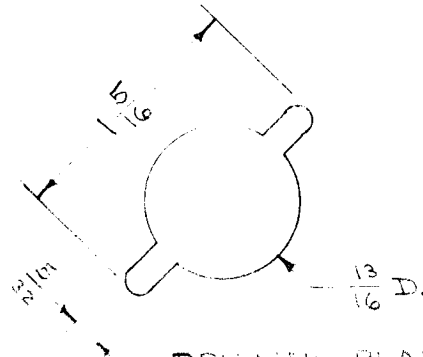
ELECTRICAL SPECIFICATIONS:

1. INPUT 1-3 70% UNBALANCED  
OUTPUT 2-4 80% BALANCED
2. FREQUENCY RESPONSE -  
2-30 mc. ± 3 db.

1.286



1.286



DRAWING PLAN.

TMC  
TR027

REQ.	ITEM	PART NO.	DESCRIPTION	SYMBOL
			THE TECHNICAL MATERIEL CORP. MAMARONECK, NEW YORK	
		STOCK SIZE	TRANSFORMER	
		MATERIAL	ANTENNA MATCHING	
		WEIGHT PER PC.		
		TYPE & TEMPER	C.D.D. E-14-53	
			DRAWN	ELEC. DES. APP.
			CHECKED	FINAL APPROVAL
		HEAT TREAT. SPEC.		
		FINISH & SPEC. NO.	2A-466	TR-027

ISSUE	ITEM	CHANGED FROM	DATE	CN. NO.	DRAFTS	CHECKER	ENG. APP.
TOLERANCES			SCALE				
ALL OTHERS	DEC. DIM. ±	DRILL, PUNCH, COMMERCIAL STOCK SIZES AND MANUFACTURERS TOLERANCES ARE NOT INCLUDED.					
	FRAC. DIM. ±						
	ANGULAR DIM. ±						