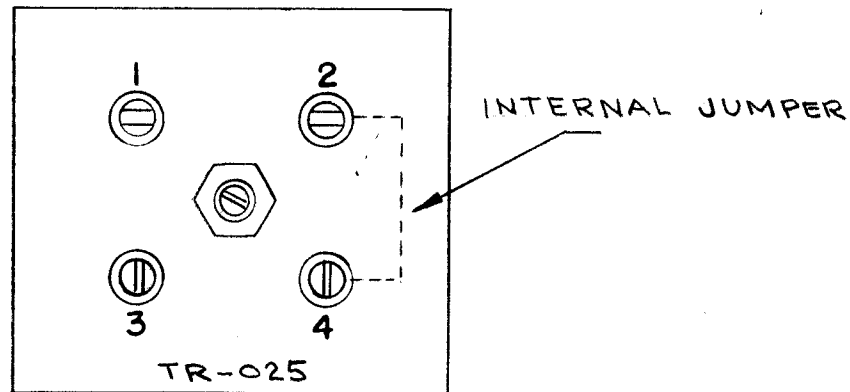
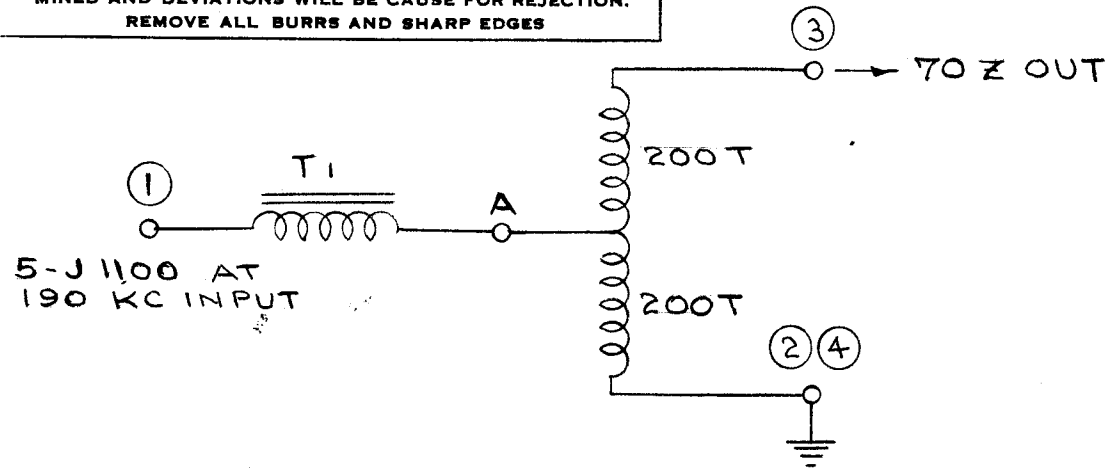
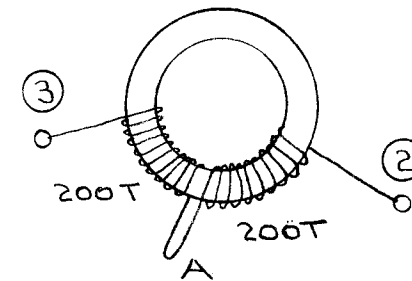


IF IT IS FOUND DESIRABLE TO CHANGE ANY TOLERANCE OR OTHER DETAIL SPECIFIED ON THIS DRAWING NOTIFY THE PURCHASER PROMPTLY.

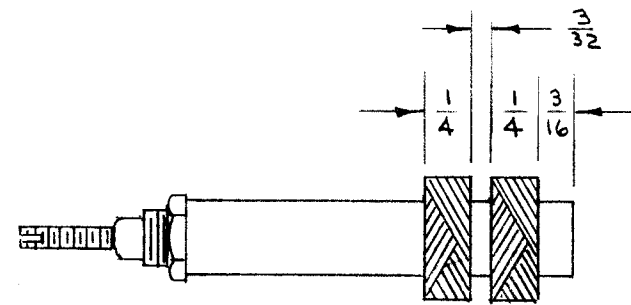
MAXIMUM ALLOWABLE TOLERANCES HAVE BEEN DETERMINED AND DEVIATIONS WILL BE CAUSE FOR REJECTION. REMOVE ALL BURRS AND SHARP EDGES



TR-025



CORE -
WIRE - #31 ENAMEL
LEAD TURNS 19 WOUND
ON TOROIDAL WINDER.



C.T.C. COIL FORM 1/4". SAME AS I.F. IN F.F.R. SLUG MADE OF STACKPOLE SK 56.

5-40 LITZ. CAM AND GEAR SAME AS I.F. COIL OF F.F.R. CAM 69. GEAR 105. 106 TURNS EACH π. L = .9 mh. Q = .86 AT 255 KC.

**NOT TO BE RELEASED
W/O AUTHORIZATION**

AUTH. BY.....
DATE:.....

REQ.	ITEM	PART NO.	DESCRIPTION	SYMBOL
			THE TECHNICAL MATERIEL CORP. MAMARONECK. NEW YORK	
			TRANSFORMER	
			TR-025	
			C.I.D.D. 5-21-53	
			DRAWN	ELEC. DES. APP. <i>AMB</i>
			CHECKED	MECH. DES. APP. <i>PS</i>
			FINAL APPROVAL	
				TR-025
			FINISH & SPEC. NO.	

ISSUE	ITEM	CHANGED FROM	DATE	CN. NO.	DRAFTS	CHECKER	ENG. APP.
TOLERANCES							
ALL OTHERS		DEC. DIM. ±	SCALE: 1/4"		DRILL, PUNCH, COMMERCIAL STOCK SIZES AND MANUFACTURERS TOLERANCES ARE NOT INCLUDED.		
		FRAC. DIM. ±					
		ANGULAR DIM. ±					

MODEL	PROJECT NO.	ASS'Y. NO.	DATE