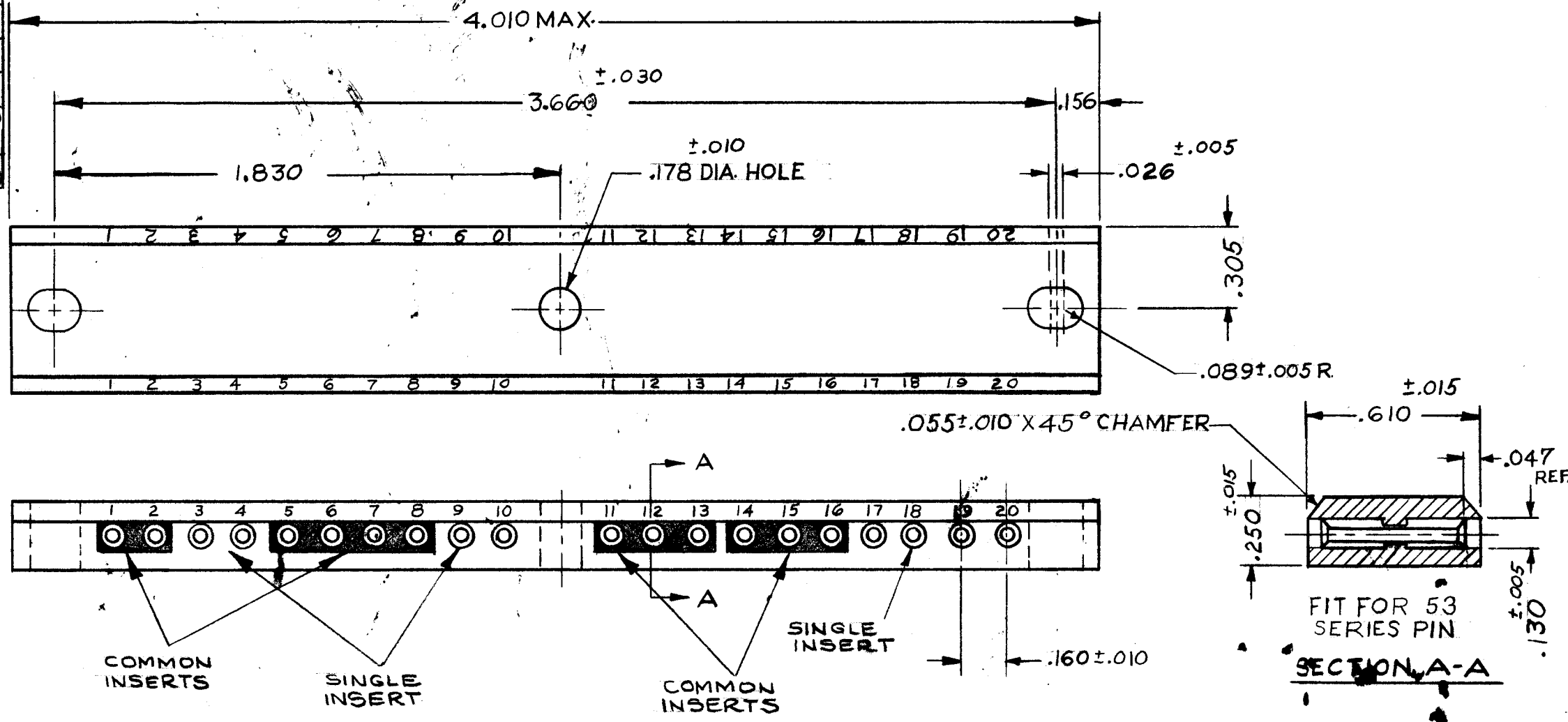


TMC PART NO.	MFG. PART NO.	COLOR	INSERT FINISH	TYPE INSERT
TM126-0	480076-0	WHITE	GOLD	20(S)
TM126-1	480076-1	BROWN	↑	20(S)
TM126-2	480076-2	RED	↑	20(S)
TM126-3	480076-3	ORANGE	↑	20(S)
TM126-4	480076-4	YELLOW	↑	20(S)
TM126-5	480076-5	GREEN	↑	20(S)
TM126-6	480076-6	BLUE	↑	20(S)
TM126-7	480076-7	VIOLET	↑	20(S)
TM126-8	480076-8	GREY	↓	20(S)
TM126-9	480076-9	BLACK	GOLD	20(S)
TM126-10	3-582973-5	GREEN	GOLD	1-4(S) 5-8(C) 9-10(S) 11-15(C) 16-20(C)
TM126-11	480077-9	WHITE	GOLD	1-10(C) 11-20(C)

- NOTES:**
- MATERIAL:
BLOCK-ZYTEL, 101 NYLON
INSERT-BRASS
 - RECOMMEND ALL THREE MOUNTING HOLES BE USED TO INSURE PROPER SEATING OF TAPER PIN
 - MATING PIN TMC NO. PE-242
 - TOOLS REQ'D FOR MFG. PURPOSES
EXTRACTION TOOL-MFG. PART NO. 380305-1.
INSERTION TOOL - MFG. PART NO. 380430-1.
 - SEE TYPE INSERT BLOCK IN CHART FOR DIFFERENT COMBINATIONS. SINGLE INSERT(S) COMMON INSERTS(C)

REVISIONS					
SYM	DESCRIPTION	DATE	E.M.N. NO.	DRAFT	CHKD
X	EXPERIMENTAL RELEASE	3/30/64	X	A.M.	@
O	ORIGINAL RELEASE FOR PRODUCTION	4-10-64	O	A.M.	@
A	TM126-10 ADD. NOTE #5 ADDED ON PICT. COMMON & SINGLE INSERTS NOTES ADD.	10/20/64	12731	W.B.	@
B	TM126-11 ADDED	8-23-65	14703	R.V.	@

B
TM126



REQ'D.	ITEM	PART NUMBER	DESCRIPTION	SYMBOL
I. JOHNSON LIST OF MATERIAL				
MATERIAL		THE TECHNICAL MATERIEL CORP. MAMARONECK, NEW YORK		
FINISH		TITLE BLOCK, TERMINAL		
UNLESS OTHERWISE SPECIFIED DIMENSIONS ARE IN INCHES AND INCLUDE CHEMICALLY APPLIED OR PLATED FINISHES		DRAWN A. MARINO CHECKED @ ELECT. DES. MECH. DES.	DATE 3-30-64 4-10-64 4-10-64 4-10-64	FINAL APPROVAL [Signature] DATE 4-10-64 SHEET
DECIMALS .X ± .05 .XX ± .01 .XXX ± .005		FRACTIONS ± 1/64 ANGLES ± 0° 30'		TM126 REV. LTR.

12	LPP-4	A3348
Q'TY./UNIT	MODEL USED ON	ASS'Y. NO.
SCALE	CODE	
#	C	S401-279
THE CONTENTS OF THIS DRAWING ARE THE EXCLUSIVE PROPERTY OF THE TECHNICAL MATERIEL CORP. ITS UNAUTHORIZED USE OR REPRODUCTION IN WHOLE OR IN PART IS STRICTLY FORBIDDEN.		

STANDARD DRAWING
NOTES