

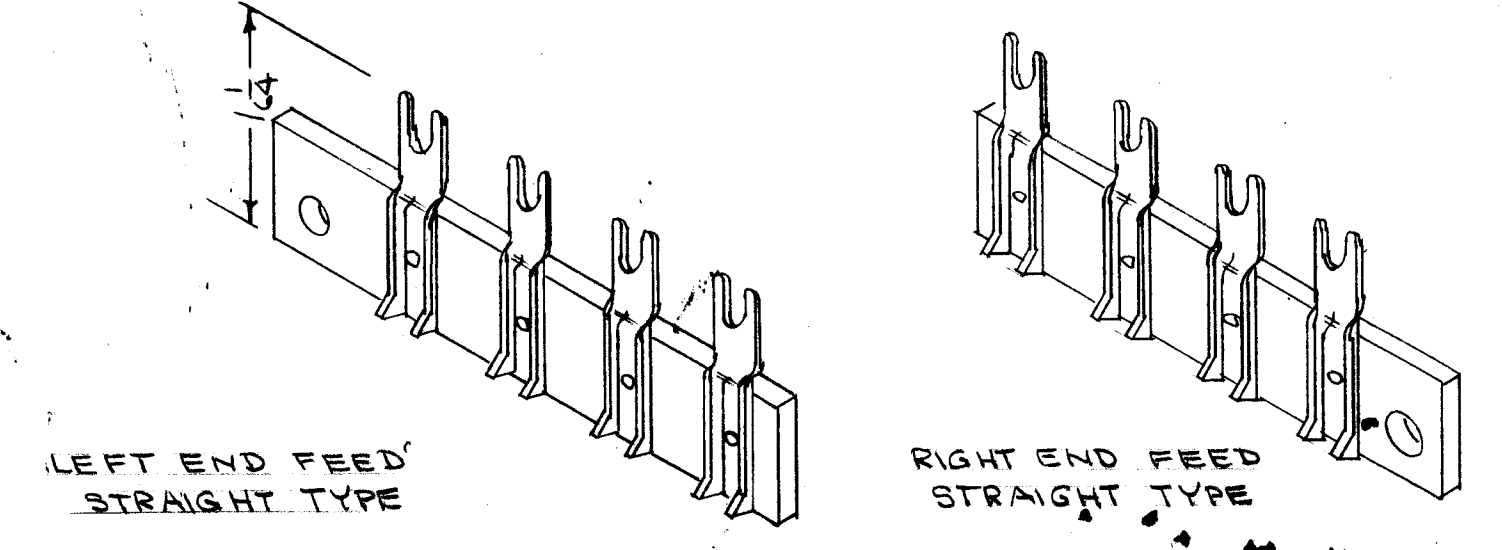
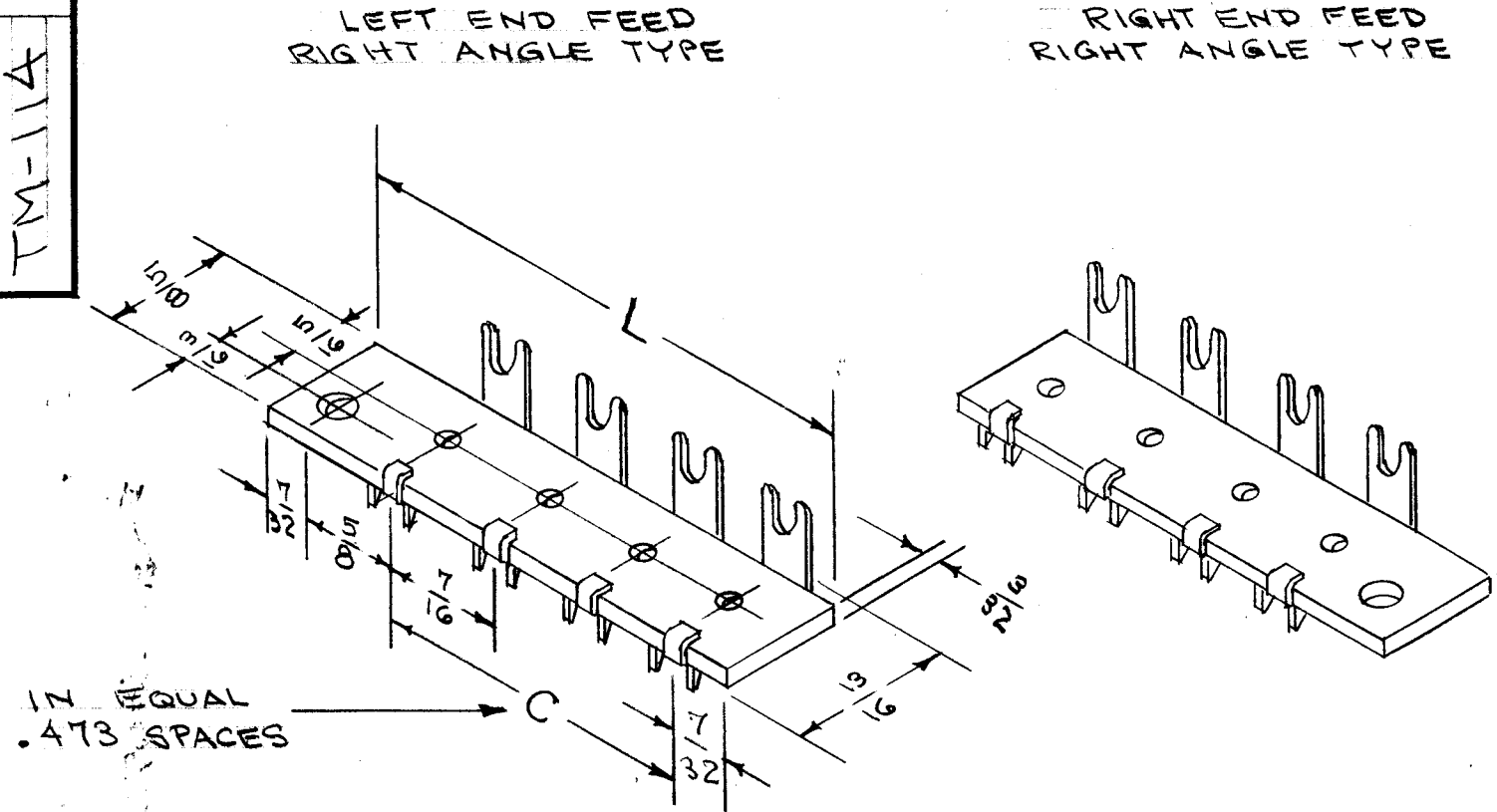
IF IT IS FOUND DESIRABLE TO CHANGE ANY TOLERANCE OR OTHER DETAIL SPECIFIED ON THIS DRAWING NOTIFY THE PURCHASER PROMPTLY.

MAXIMUM ALLOWABLE TOLERANCES HAVE BEEN DETERMINED AND DEVIATIONS WILL BE CAUSE FOR REJECTION. REMOVE ALL BURRS AND SHARP EDGES

# STANDARD DRAWING

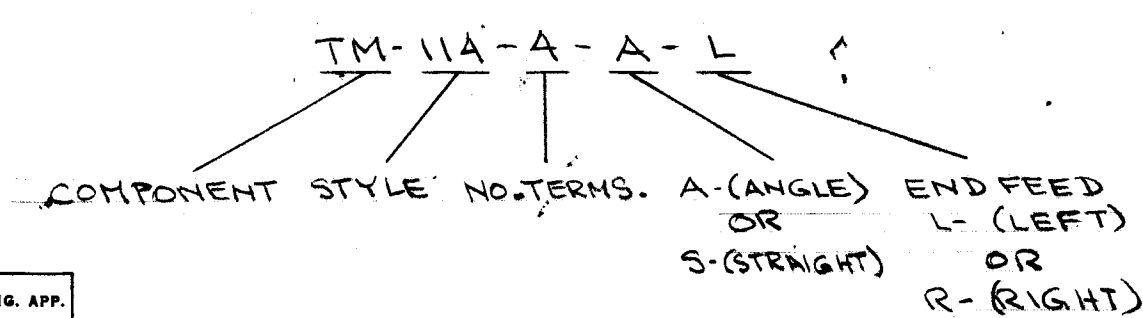
TM-114

TMC. NO.	CAT. NO. *	L	C	NO. TERMS
TM-114-2---	2-161---	1 1/2	.437	2
-3	3-	1 5/16	.874	3
-4	4-	2 3/8	1.311	4
-5	5-	2 13/16	1.748	5
-6	6-	3 1/4	2.185	6
-7	7-	3 11/16	2.622	7
-8	8-	4 1/8	3.059	8
-9	9-	4 9/16	3.496	9
-10	10-	5	3.933	10
-11	11-	5 7/16	4.370	11
-12	12-	5 7/8	4.807	12
-13	13-	6 5/16	5.244	13
-14	14-	6 3/4	5.681	14
-15	15-	7 3/16	6.118	15
-16	16-	7 5/8	6.555	16
-17	17-	8 1/16	6.992	17
-18	18-	8 1/2	7.429	18
-19	19-	8 5/16	7.866	19
-20	20-	9 3/8	8.303	20



\* WHEN PURCHASING - ADD ANGLE & ENDFEED DESIGNATIONS TO MANUFACTURERS NO.

TYPE DESIGNATION TO BE IN FOLLOWING FORM



REF: H.B. JONES DIV., CINCH MFG. CO., SERIES 161

REQ.	ITEM	PART NO.	DESCRIPTION	SYMBOL
		#	THE TECHNICAL MATERIEL CORP.	
		STOCK SIZE	MAMARONECK. NEW YORK	
		#	FANNING STRIP	
		MATERIAL		
		WEIGHT PER PC.		
		TYPE & TEMPER		
		HEAT TREAT. SPEC.		
		FINISH & SPEC. NO.		

ISSUE	ITEM	CHANGED FROM	DATE	CN. NO.	DRAFTS	CHECKER	ENG. APP.
TOLERANCES		SCALE:					
ALL OTHERS		DRILL, PUNCH, COMMERCIAL STOCK SIZES AND MANUFACTURERS TOLERANCES ARE NOT INCLUDED.					

MODEL	PROJECT NO.	ASS'Y. NO.	DATE
USED ON			

DATE: 11-2-54  
 DRAWN: [Signature]  
 CHECKED: [Signature] 11/3/54  
 FINAL APPROVAL: [Signature]  
 TM-114