

IF IT IS FOUND DESIRABLE TO CHANGE ANY TOLERANCE OR OTHER DETAIL SPECIFIED ON THIS DRAWING NOTIFY THE PURCHASER PROMPTLY.

MAXIMUM ALLOWABLE TOLERANCES HAVE BEEN DETERMINED AND DEVIATIONS WILL BE CAUSE FOR REJECTION. REMOVE ALL BURRS AND SHARP EDGES

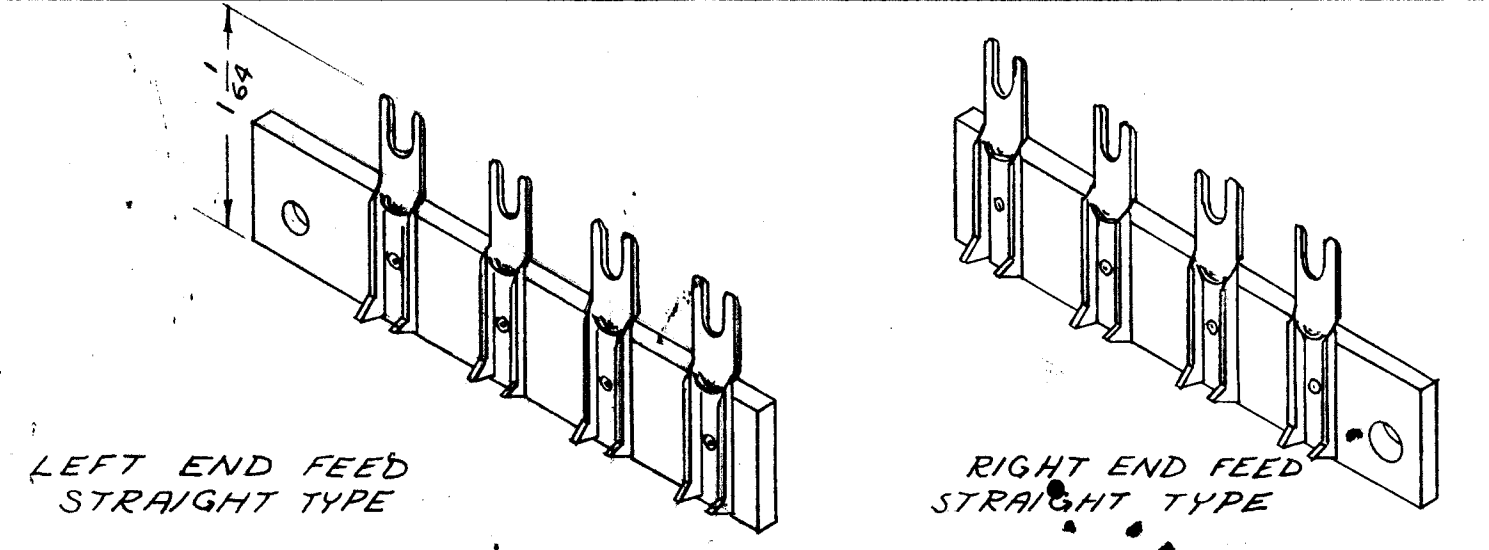
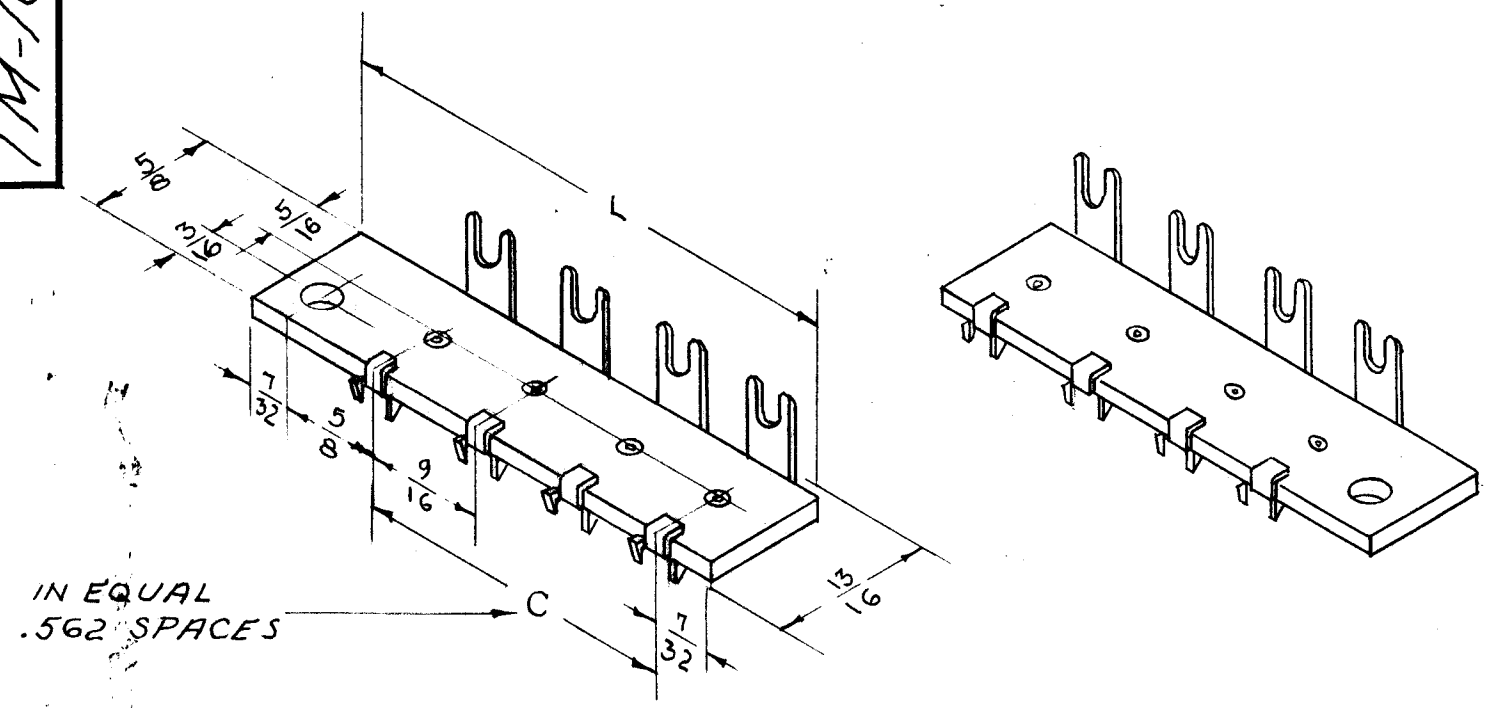
STANDARD DRAWING

TM-106 A

T.M.C. No.	Cat. * No.	L	C	No. Of Terminals
TM-106-2---	2-162---	1 5/8	.562	2
TM-106-3---	3-162---	2 3/16	1.125	3
TM-106-4---	4-162---	2 3/4	1.687	4
TM-106-5---	5-162---	3 5/16	2.25	5
TM-106-6---	6-162---	3 7/8	2.812	6
TM-106-7---	7-162---	4 7/16	3.375	7
TM-106-8---	8-162---	5.	3.937	8

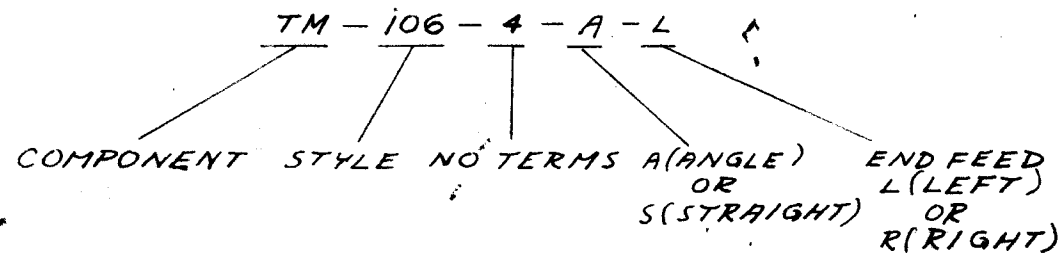
LEFT END FEED
RIGHT ANGLE TYPE

RIGHT END FEED
RIGHT ANGLE TYPE



* When purchasing — Add Angle & End feed letter designations to Mfg. Number

TYPE DESIGNATION SHALL BE IN FOLLOWING FORM



REF. H.B. JONES DIV., CINCH MFG. CO. SERIES 162

REQ.	ITEM	PART NO.	DESCRIPTION	SYMBOL
		#	THE TECHNICAL MATERIEL CORP.	
		STOCK SIZE	MAMARONECK. NEW YORK	
		#	FANNING STRIP	
		MATERIAL		
		WEIGHT PER PC.		
		#		
		TYPE & TEMPER	P.B. 10-15-54	
		#	DRAWN	ELEC. DES. APP. MECH. DES. APP.
		HEAT TREAT. SPEC.	J.A.D. 10/24/54	A.J.J. [Signature]
		#	CHECKED	FINAL APPROVAL
		FINISH & SPEC. NO.		

REV.	DESCRIPTION	DATE	CN. NO.	DRAFTS	CHECKER	ENG. APP.
A	REDRAWN & REVISED	10-25/54	1	M.H.S.	J.A.D.	[Signature]

TOLERANCES: DEC. DIM. ±, FRAC. DIM. ±, ANGULAR DIM. ±

SCALE: DRILL, PUNCH, COMMERCIAL STOCK SIZES AND MANUFACTURERS TOLERANCES ARE NOT INCLUDED.

MODEL	PROJECT NO.	ASS'Y. NO.	DATE

TM-106 A