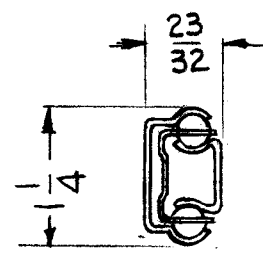
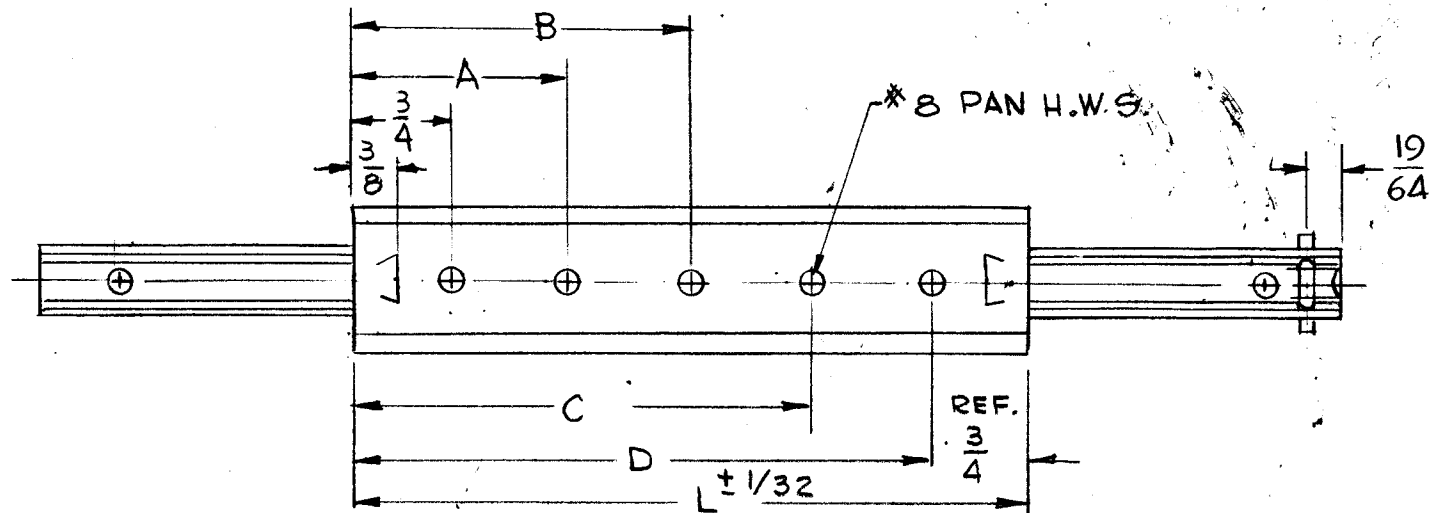


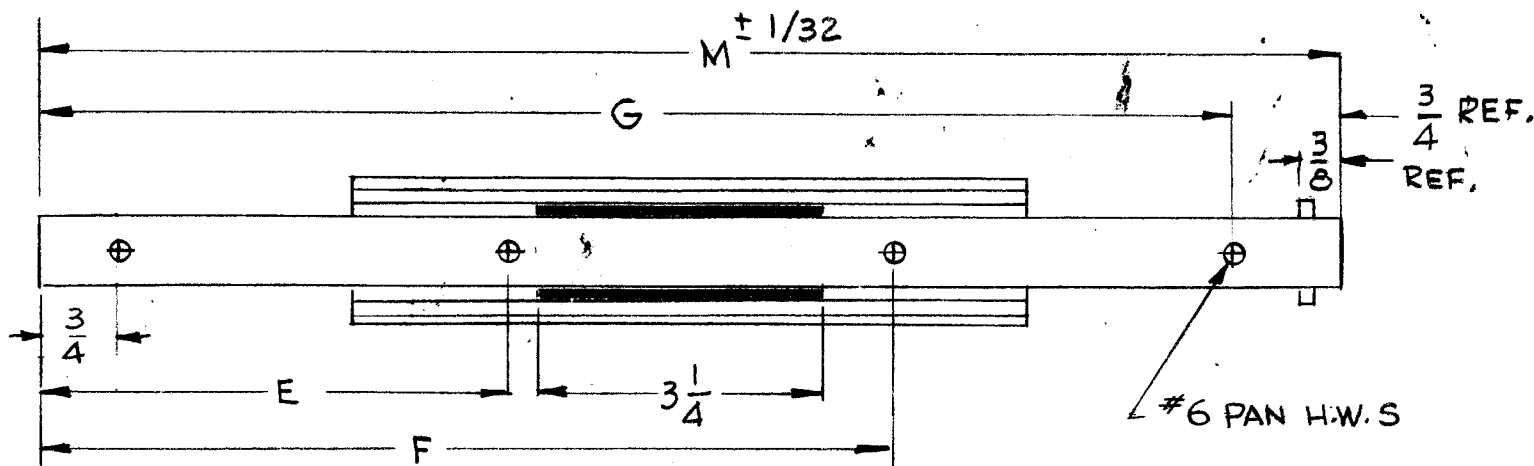
TMC PART NO.	MFG. PART NO.	SLIDE TRAVEL IN INCH	CHANNEL					SLIDE					LOAD CAP.
TK123-1	A15-11	11	A	B	C	D	L	E	F	G	M	40 LB	
			-	5 1/2	-	10 1/4	11	5 3/4	10 3/4	14 1/4	15		

REVISIONS						
SYM	DESCRIPTION	DATE	E.M.N. NO.	DRAFT	CHKD	APPD
X	EXPER. RELEASE	12-18-64		G.D.L.		
Ø	ORIGINAL RELEASE FOR PRODUCTION	12-28-64	Ø	h.l.		

TK123



NOTE:
 NORMAL TRAVEL IS 4" LESS THAN SLIDE LENGTH AND MAY BE INCREASED BY CHANGING THE POSITION OF THE CENTER TRACK RELATIVE TO THE CHANNEL.



STANDARD DRAWING

REQ'D.	ITEM	PART NUMBER	DESCRIPTION	SYMBOL
TOMAN LIST OF MATERIAL				
MATERIAL .062 COLD ROLLED STEEL			THE TECHNICAL MATERIEL CORP. MAMARONECK, NEW YORK	
FINISH BLACK OXIDIZED			TITLE SLIDE SET	
UNLESS OTHERWISE SPECIFIED DIMENSIONS ARE IN INCHES AND INCLUDE CHEMICALLY APPLIED OR PLATED FINISHES			DRAWN G.D.L.	DATE 12-18-64
			CHECKED @	DATE 12-21-64
			ELECT. DES.	DATE
			MECH. DES.	DATE 12-28-64
			FINAL APPROVAL	
			TK123	
			SHEET	
			REV. LTR.	

1	COPA - 2	
Q'TY./UNIT	MODEL USED ON	ASS'Y. NO.
SCALE DO NOT SCALE	CODE C	5401-209
THE CONTENTS OF THIS DRAWING ARE THE EXCLUSIVE PROPERTY OF THE TECHNICAL MATERIEL CORP. ITS UNAUTHORIZED USE OR REPRODUCTION IN WHOLE OR IN PART IS STRICTLY FORBIDDEN.		

NOTES