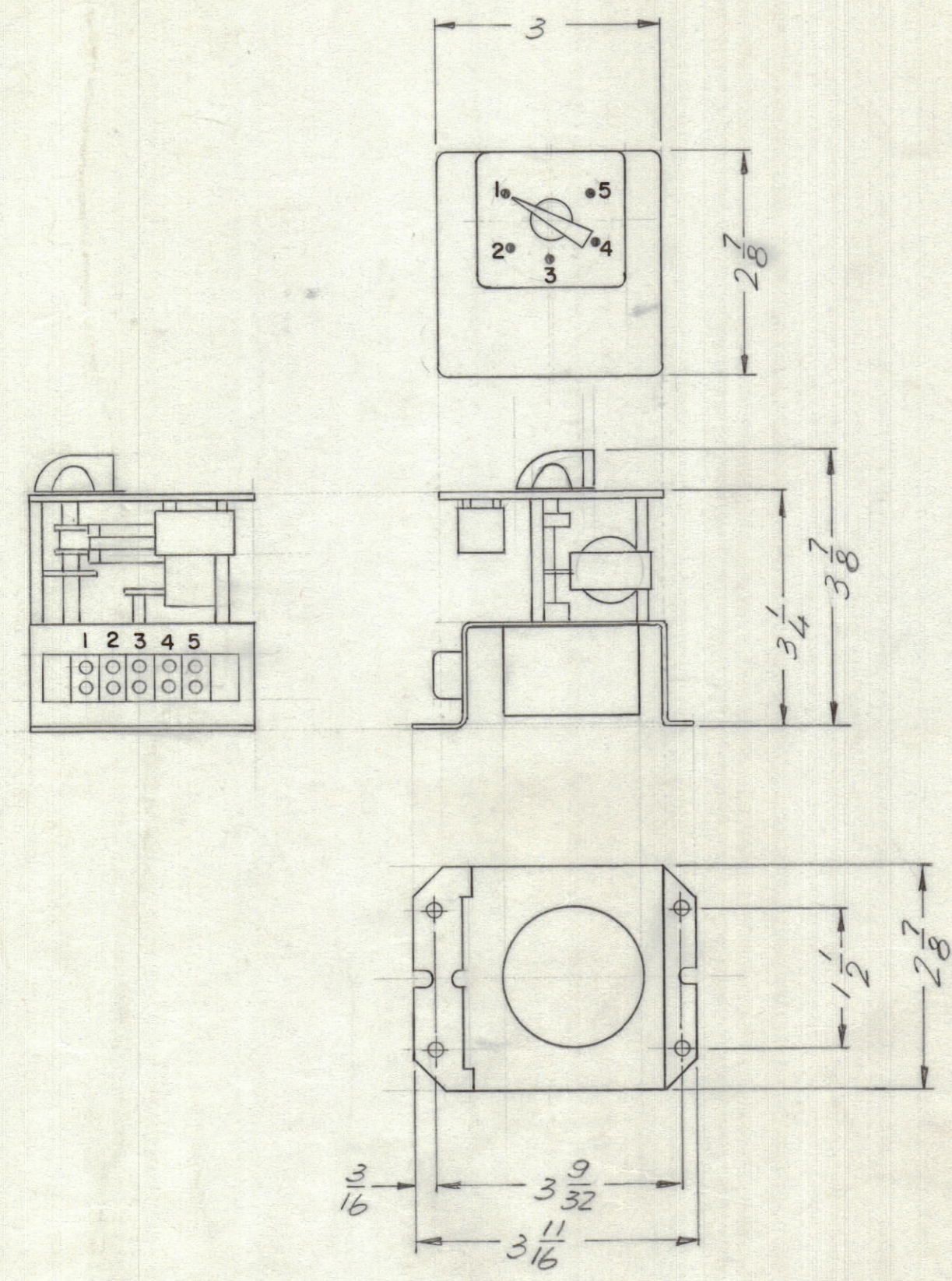
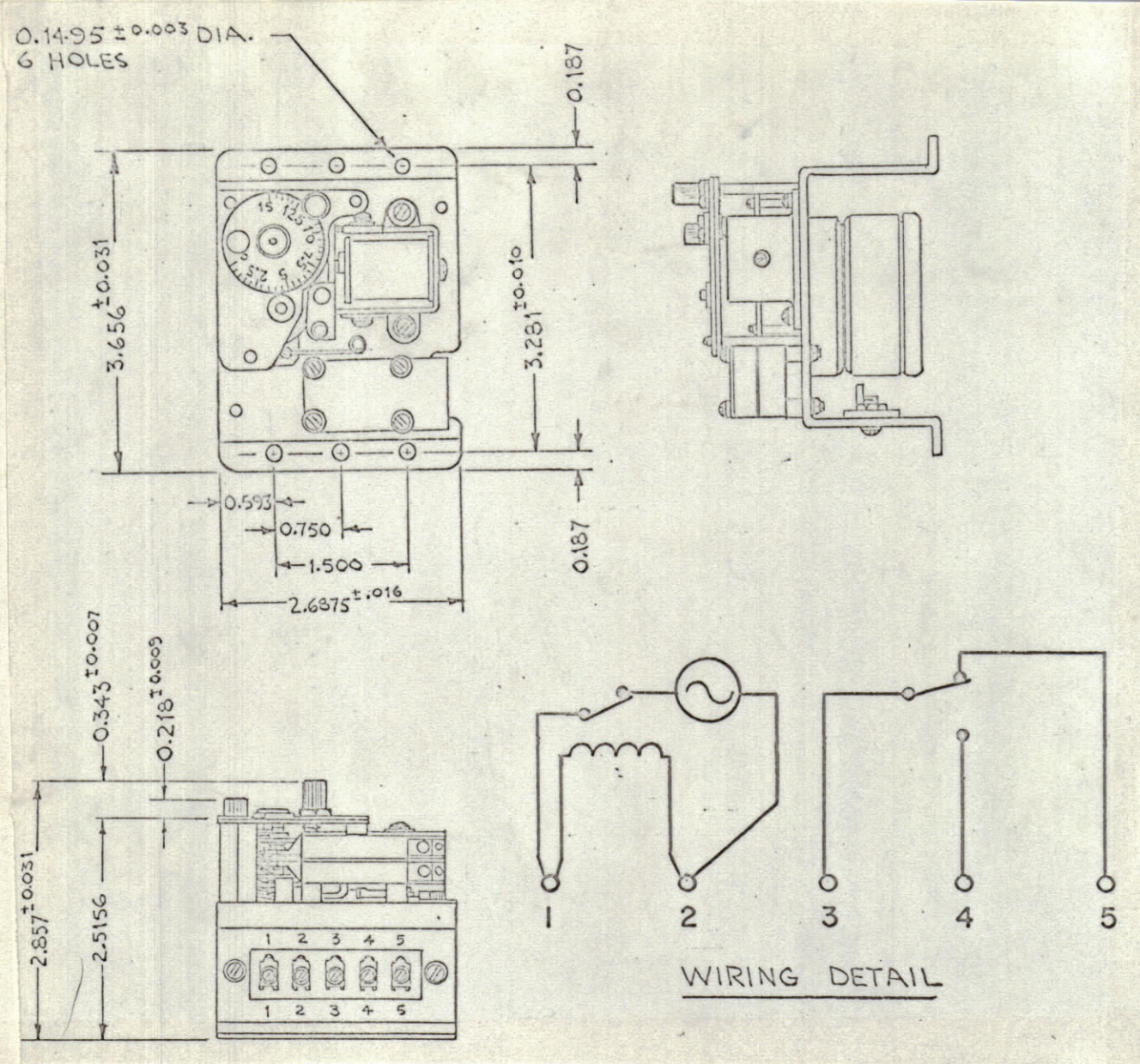




REVISIONS						
ZONE	LTR	DESCRIPTION	DATE	E.M.N.NO	DRAFT	CHKD APPD
	C	REDRAWN	10/16/73	21107	CE	EJ



NO LONGER AVAILABLE

SPECIFICATION

TIME RANGE: 5 MINUTES  
 DIAL DIVISION: 10 SEC  
 ADJUSTMENT RANGE SETTING: 30 SEC (MIN), 5 MIN (MAX)  
 MOTOR RATING: SEE CHART  
 REPEAT ACCURACY: WITHIN 2% OF TIME RANGE  
 SWITCH RATING: CONT. ARRANGEMENT-SPDT  
 CURRENT & VOLTAGE-10AMPS @ 125VAC  
 5AMPS @ 250VAC  
 RESISTIVE LOAD

TYPE CLUTCH: DIRECT  
 GEAR MATERIAL: CASE HARDENED STEEL  
 LIFE: MECHANICAL LIFE-1,000,000 OPERATIONS

TMC P/N	MOTOR RATING	NO LONGER AVAILABLE S401-46 MFR P/N	EQUIVALENT S401-46 MFR P/N
TI 105-1	220/240V 60 HZ	471	
-2	220/240V 50 HZ	471-A	472 AA
-3	115V 60 HZ	471-A	
-4	115V 50 HZ	471-A	

QTY. REQ.	ITEM	PART NO.	DESCRIPTION	SYMBOL
F. BUDETTI LIST OF MATERIAL				
	FINAL APPROVAL	DATE	THE TECHNICAL MATERIEL CORP. MAMARONECK, NEW YORK	
	MECH. DES.	DATE		
	ELECT. DES.	DATE		
	CHECKED	DATE		
	DRAWN	DATE	TIMER, ADJUSTABLE	
SIZE	CODE IDENT. NO.	DWG NO.	ISSUE	
C	82679	TI 105	C	
SCALE NTS			SHEET	OF
			1	

QTY / UNIT	MODEL USED ON	ASS'Y NO.
	AP129	A5476
APPLICATION		
CODE		
NOTICE TO PERSONS RECEIVING THIS DRAWING THE TECHNICAL MATERIEL CORPORATION claims proprietary right in the material disclosed hereon. This drawing is issued in confidence for engineering information only and may not be reproduced or used to manufacture anything shown hereon without permission from THE TECHNICAL MATERIEL CORPORATION to the user. This drawing is loaned for mutual assistance and is subject to recall at any time.		

UNLESS OTHERWISE SPECIFIED DIMENSIONS ARE IN INCHES AND INCLUDE CHEMICALLY APPLIED OR PLATED FINISHES

TOLERANCES ON

DECIMALS	FRACTIONS
.X ± .05	± 1/64
.XX ± .01	ANGLES
.XXX ± .005	± 0° -30'

MATERIAL

FINISH