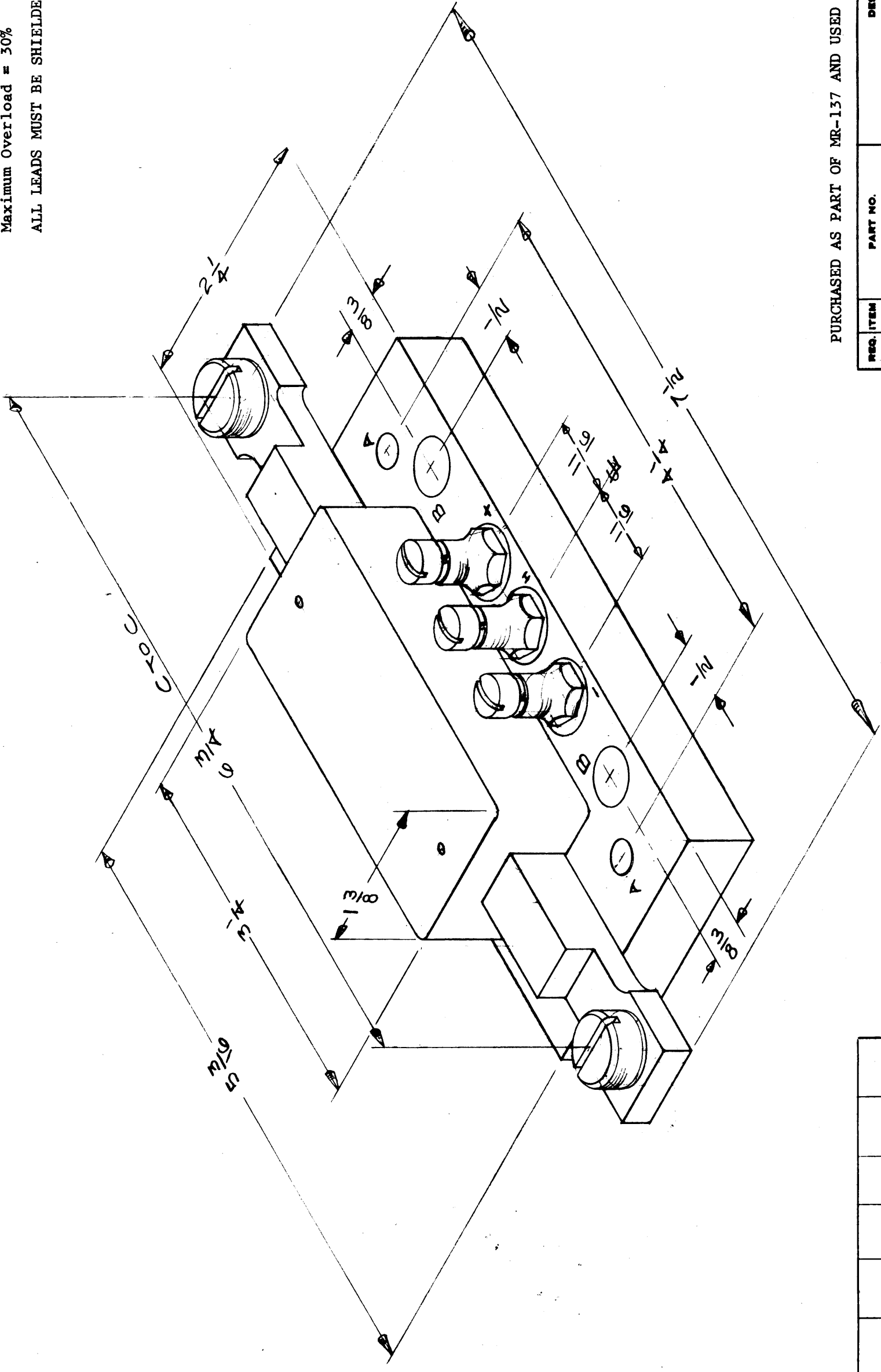


TH-101

PURCHASED AS PART OF MR-157 AND USED AS A MATCHED SET

Thermol EMF = approximately 12.5
 Lead Resistance = .6 ohms
 Maximum Overload = 30%
 ALL LEADS MUST BE SHIELDED



A ~ 3/16 DIA. 2 REQ.
 B ~ 11/64 DIA. 2 REQ.

PURCHASED AS PART OF MR-157 AND USED AS A MATCHED SET

REQ. ITEM	PART NO.	DESCRIPTION	SYMBOL
		THE TECHNICAL MATERIEL CORP. MAMARONECK, NEW YORK	
		THERMOCOUPLE	
		MR-137	
		CS	11/64
		DRAWN	9/13
		ENGINEER	
		FINAL APPROVAL	
		TH-101	A
		ELEC. DES. APP. (ME H. DES. APP.)	

TYPE	TEMPER	HEAT TREAT. SPEC.	DATE
			2-25-60
FINISH & PEC. NO.	PROJECT NO.	ASSY. NO.	UNIT
	AX-209		1
	MODEL	USED ON	

ISSUE ITEM	CHANGED FROM	DATE	CH. NO.	DRAFTS	CHECKER	ENG. APP.
A 1	(B) HOLES ADDED	7/19/60	2607	W	H	PC
TOLERANCES						
SCALE:						
MAXIMUM ALLOWABLE TOLERANCES HAVE BEEN DETERMINED AND ANY DEVIATIONS WILL BE CAUSE FOR REJECTION. REMOVE ALL BURRS AND SHARP EDGES						
DEC. DIM. ±						
FRAC. DIM. ±						
ANGULAR DIM. ±	1/64					