

RELEASED

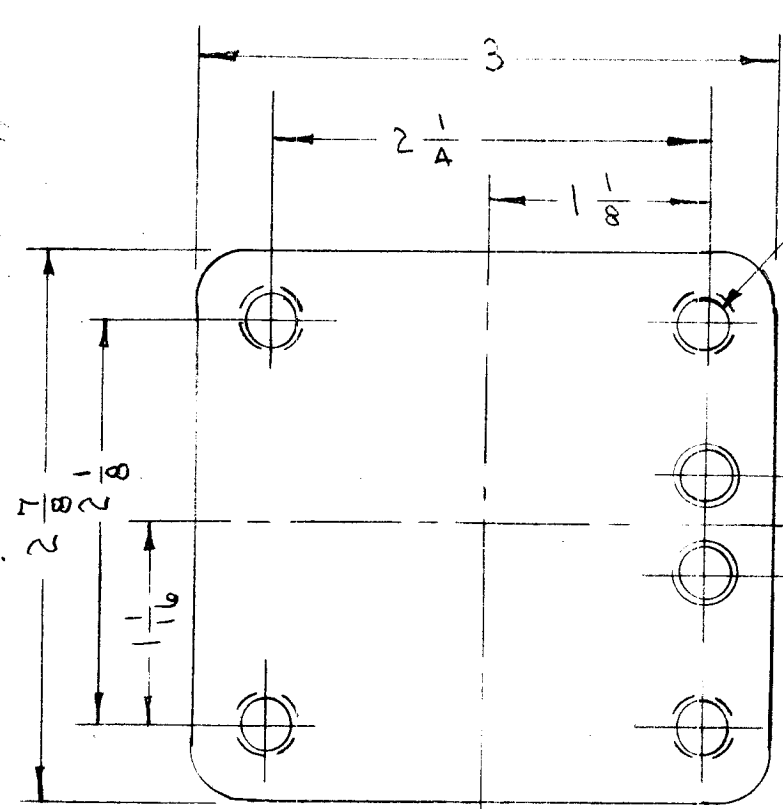
TF-5001

A

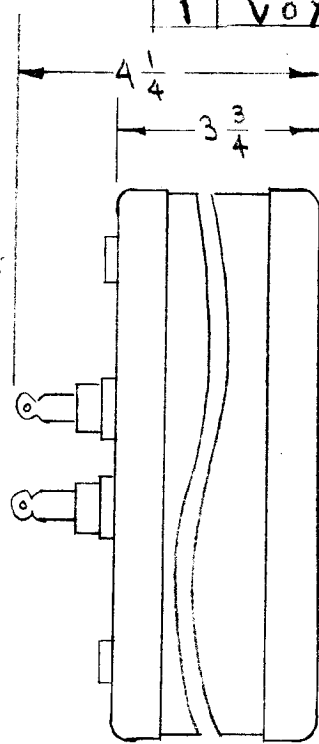
IF IT IS FOUND DESIRABLE TO CHANGE ANY TOLERANCE OR OTHER DETAIL SPECIFIED ON THIS DRAWING NOTIFY THE PURCHASER PROMPTLY.

MAXIMUM ALLOWABLE TOLERANCES HAVE BEEN DETERMINED AND DEVIATIONS WILL BE CAUSE FOR REJECTION. REMOVE ALL BURRS AND SHARP EDGES

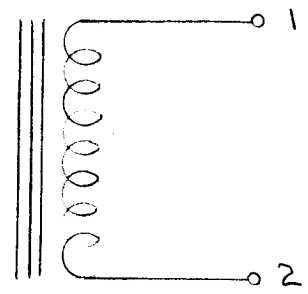
Req. Per UNIT	USED ON			
	MODEL	PROJECT NO.	ASS'Y. NO.	DATE
2	XFK			
	LFA	109	A-201	9-22-57
1	VOX			5-19-58



8-32 X 5/16 DEEP A INSERTS



STAMP TOP TMC
TF-5001
1/8 HIGH BLACK.



10 HYS @ 125 M.A.D.C., 60V, 120 CPS.
DC. RES. 150 Ω.
INS. TEST - 1000V. RMS.
GR. 1 - CL. A. - FAM. 04

DIMENSIONS FOR REF. ONLY

MECHANICAL SPECIFICATIONS:

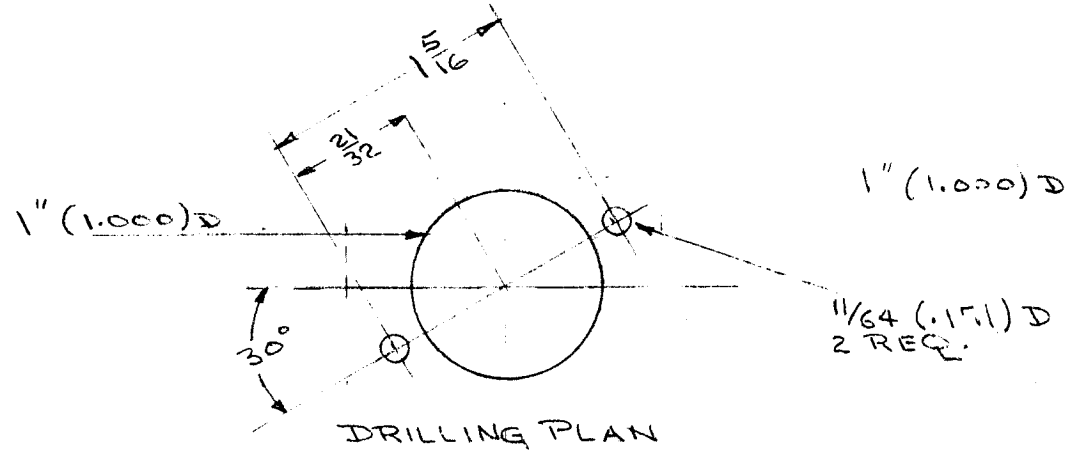
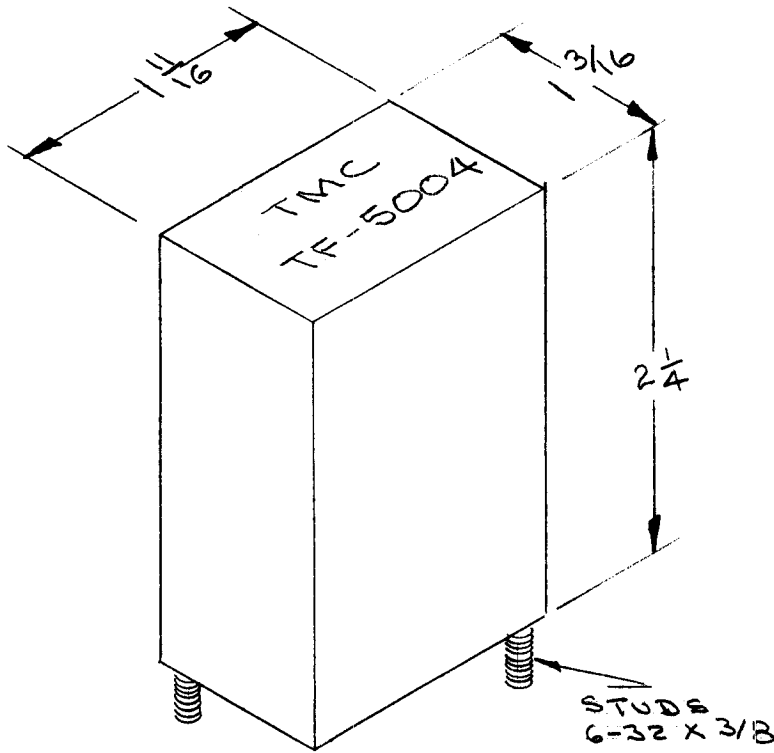
- 1- CASE - STEEL
- 2- TERMINALS - CERAMIC
- 3- FILLER - COMPOUND

REQ.	ITEM	PART NO.	DESCRIPTION	SYMBOL
	#		THE TECHNICAL MATERIEL CORP.	
		STOCK SIZE	MAMARONECK. NEW YORK	
	#	#	FILTER REACTOR.	
		MATERIAL		
		WEIGHT PER PC.		
			C.D.D. 9-22-57	
			DRAWN	
			ELEC. DES. APP.	
			MECH. DES. APP.	
			HEAT TREAT. SPEC.	
			SMOOTH GREY ENAMEL	
			S-115	
			FINISH & SPEC. NO.	
			CHECKED	
			FINAL APPROVAL	
			SUPERCEDES (PART NO. 15-005)	
			TF-5001	
			AEM 000	A

ISSUE	ITEM	CHANGED FROM	DATE	CN. NO.	DRAFTS	CHECKER	ENG. APP.
A	2	TMC NO. ADDED	12-8-57	2	C.D.D.		
	1	WAS 10V, 60W		1	C.D.D.		
		WAS 225					

TOLERANCES		SCALE	DRILL, PUNCH, COMMERCIAL STOCK SIZES AND MANUFACTURERS TOLERANCES ARE NOT INCLUDED.
ALL OTHERS	DEC. DIM. ± FRAC. DIM. ± 1/64 ANGULAR DIM. ±	FULL	
	A		

REQ. PER UNIT	USED ON			TF-5004 E
	MODEL	ASS'Y. NO.	DATE	
4	CFA		10/3/56	



ELECTRICAL SPECIFICATIONS:
 INDUCTANCE : 750 mH \pm 1%
 Q : 75 OR GREATER

MECHANICAL SPECIFICATIONS:
 CASE : STEEL
 FINISH : GREY ENAMEL

ISSUE	ITEM	CHANGED FROM	DATE	CH. NO.	DRAFTS	CHECKER	ENG. APP.	REQ. ITEM	PART NO.	DESCRIPTION	SYMBOL	
E	1	INDUCTANCE WAS \pm 0.03	11.30.64	12868	WJB	J.P.	FEE			THE TECHNICAL MATERIEL CORP. MAMARONECK. NEW YORK	REACTOR, FIXED	
D	1	DRILLING PLAN CHGD.	11/9/56	4	J.H.B.	E.C.D.	W.C.		STOCK SIZE			
C	1	COMPLETELY REVISED	10/3/56	3	J.H.B.	E.C.D.	A.J.I.		MATERIAL			
TOLERANCES			SCALE: 2A-413									
DEC. DIM. \pm FRAC. DIM. \pm ANGULAR DIM. \pm			MAXIMUM ALLOWABLE TOLERANCES HAVE BEEN DETERMINED AND ANY DEVIATIONS WILL BE CAUSE FOR REJECTION. REMOVE ALL BURRS AND SHARP EDGES									
A								TYPE & TEMPER	HEAT TREAT. SPEC.	DRAWN	CHECKED	FINAL APPROVAL
								FINISH & SPEC. NO.	ELEC. DES. APP.	MECH. DES. APP.	TF-5004	E

IF IT IS FOUND DESIRABLE TO CHANGE ANY TOLERANCE OR OTHER DETAIL SPECIFIED ON THIS DRAWING NOTIFY THE PURCHASER PROMPTLY.

TF-5005

MAXIMUM ALLOWABLE TOLERANCES HAVE BEEN DETERMINED AND DEVIATIONS WILL BE CAUSE FOR REJECTION. REMOVE ALL BURRS AND SHARP EDGES

USED ON

MODEL	PROJECT NO.	ASS'Y. NO.	DATE
AMC-6			6/18/53

REQ.	ITEM	PART NO.	DESCRIPTION	SYMBOL
			THE TECHNICAL MATERIEL CORP. MAMARONECK, NEW YORK	
STOCK SIZE			<i>REACTOR, FILTER</i>	
MATERIAL WEIGHT PER PC.				
TYPE & TEMPER			<i>2024</i>	
HEAT TREAT. SPEC.			DRAWN	
FINISH & SPEC. NO.			ELEC. DES. APP. MECH. DES. APP.	
			CHECKED	
			FINAL APPROVAL	
			<i>WJC</i>	
			TF-5005	

ISSUE	ITEM	CHANGED FROM	DATE	CN. NO.	DRAFTS	CHECKER	ENG. APP.
-------	------	--------------	------	---------	--------	---------	-----------

TOLERANCES

SCALE S401-158(32930)

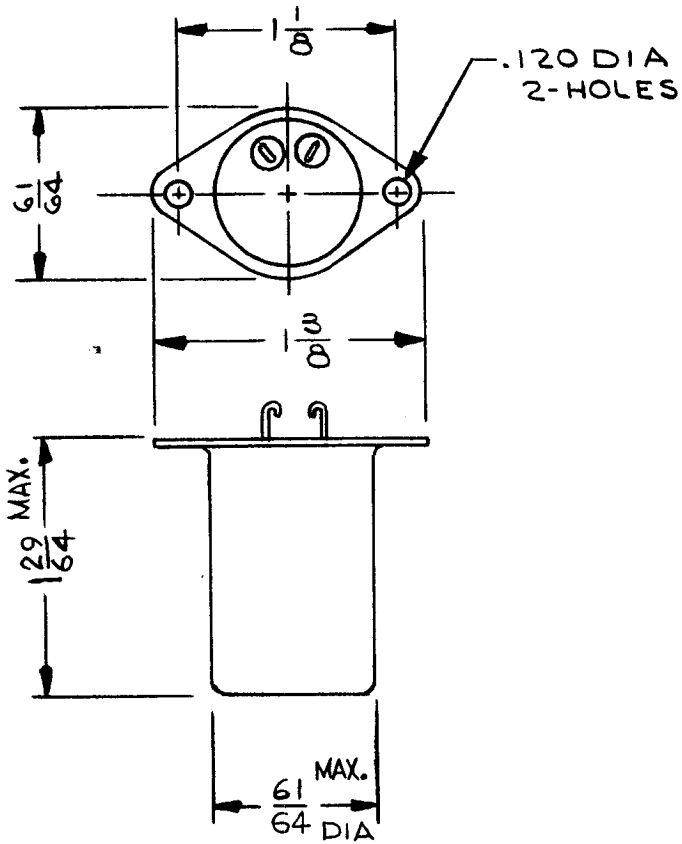
ALL OTHERS
DEC. DIM. \pm
FRAC. DIM. \pm
ANGULAR DIM. \pm

C

DRILL, PUNCH, COMMERCIAL STOCK SIZES AND MANUFACTURERS TOLERANCES ARE NOT INCLUDED.

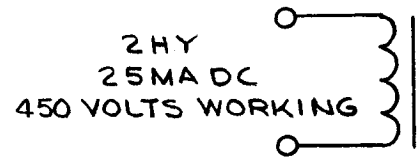
STANDARD DRAWING

REQ. PER UNIT	USED ON			TF5024	A
	MODEL	ASS'Y. NO.	DATE		
1	TSTE-10K		2-28-66		

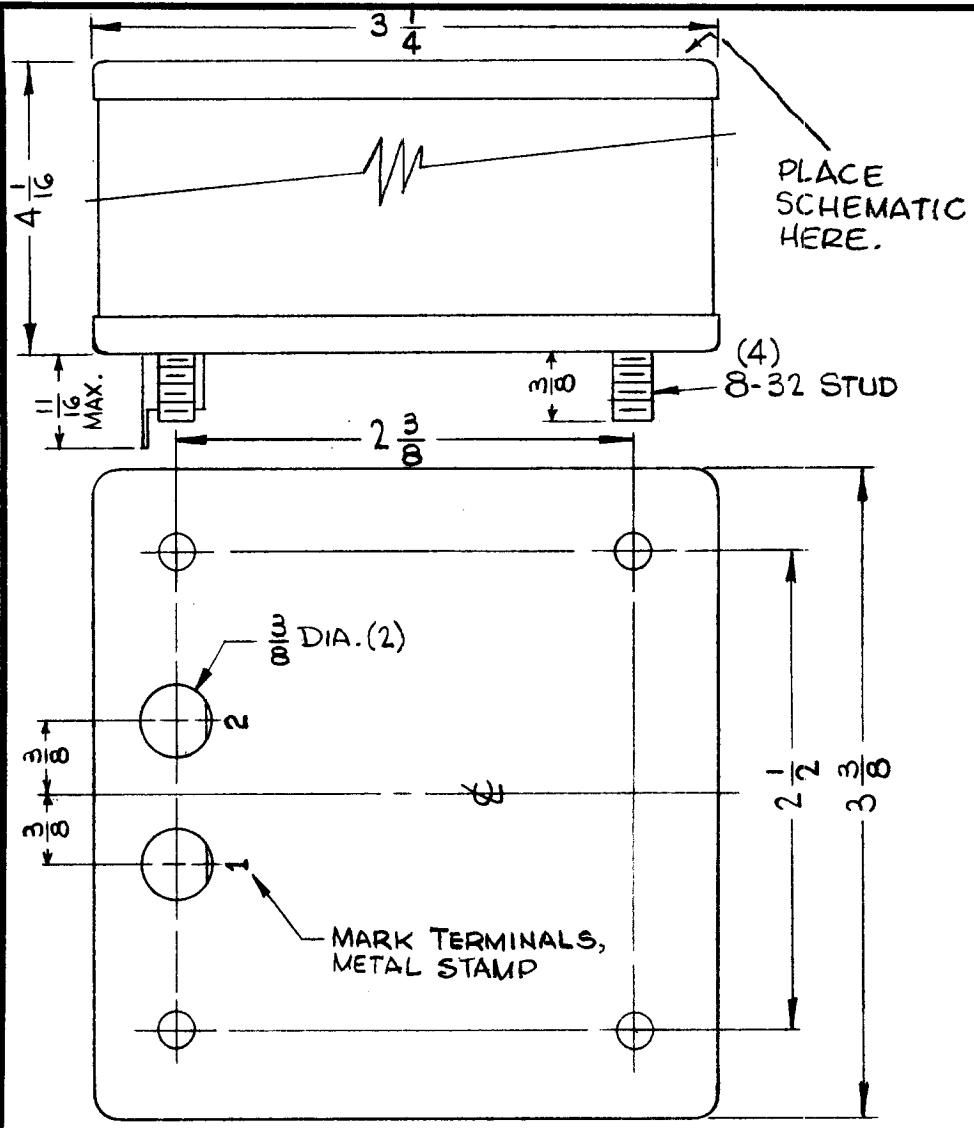


- SPECIFICATIONS -

INDUCTANCE: 2 HENRIES
 CURRENT: 25 MA DC
 WORKING VOLTAGE: 450 VOLTS DC
 BREAKDOWN VOLTAGE: 1300 RMS
 CASE MATERIAL & FINISH: METAL, TMC GRAY
 HERMETICALLY SEALED.
 TERMINALS: SOLDER TYPE
 MARKING: TMC P/N, SCHEMATIC WITH ELECT.
 RATINGS, LETTERING BLK GOTHIC.



SYM	DESCRIPTION	DATE	CH. NO.	DRAFTS	CHECKER	ENG. APP.	REQ. ITEM	PART NO.	DESCRIPTION	SYMBOL			
A	129 WAS 17/16 - 61 WAS 15/64 ORIGINAL RELEASE FOR PRODUCTION	7-14-66	16562	DA	JCS	MM			THE TECHNICAL MATERIEL CORP. MAMARONECK. NEW YORK REACTOR				
Ø		3-31-66	Ø		WJW								
UNLESS OTHERWISE SPECIFIED DIMENSIONS ARE IN INCHES AND INCLUDE CHEMICALLY APPLIED OR PLATED FINISHES							SCALE		J.L. 2/28/66 H.D. 2/28/66 MM				
DECIMALS .X ± .05 .XX ± .01 .XXX ± .005							TOLERANCES ± 1/64 ANGLES ± 0° 30'		TYPE & TEMPER HEAT TREAT. SPEC.		DRAWN J.L.	CHECKED H.D.	FINAL APPROVAL MM
CODE S401-30(6624)							FINISH & SPEC. NO.		RELEC. DES. APP. MECH. DES. APP.		TF5024	A	



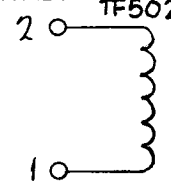
REQ. PER UNIT	USED ON			TF5026	Ø
	MODEL	ASS'Y. NO.	DATE		
1	LRCB-1		4-1-65		
1	LRCD-1		4-1-65		

— SPECIFICATIONS —

NO. OF TERMINALS : 2
 HI-POT : 1000
 DC RESIST. : .12
 INDUCTANCE : .03 HY. MIN. WITH 10 V. AC, 60 CPS,
 1.0 A. DC ON TERMINALS 1, 2.
 SPECIAL TESTS : .004 HY. MIN. WITH 10 V. AC, 60 CPS,
 6 A. DC ON TERMINALS 1, 2.

STKG. : BUTT
 GAP : .008
 HERM. SEALED
 POTTING MAT'L. : PITCH
 FINISH : GRAY
 STAMPING : MARKING PROCESS AS PER TMC
 SPEC. S-727. LETTERING TO BE
 BLACK GOTHIC LOCATED AS PER
 NOTE BELOW.

THE TECHNICAL MATERIEL CORP.
 MAMARONECK NEW YORK



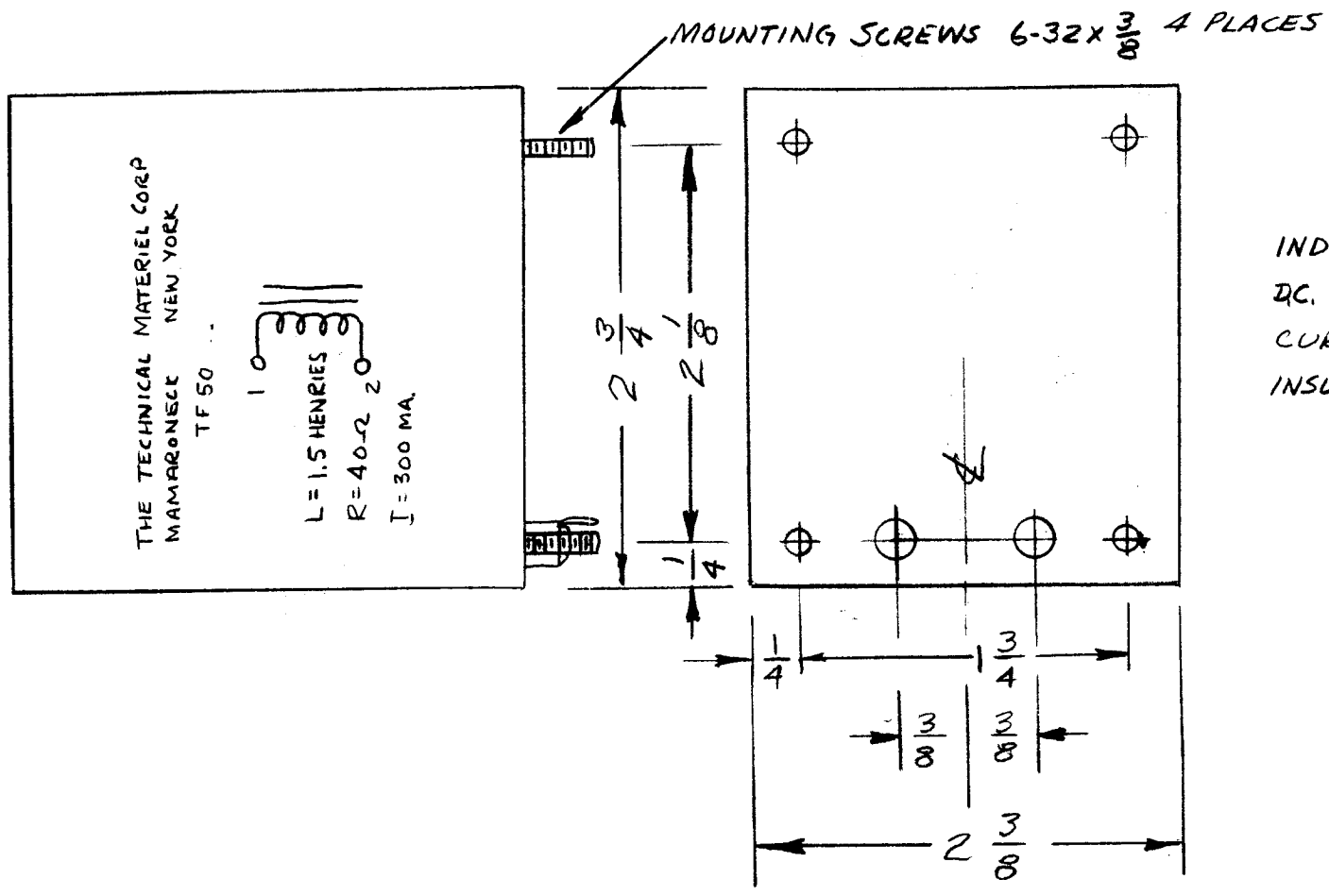
.030 HY 1 A. DC
 .004 HY. 6 A. DC

NOTE :
 TO BE MARKED
 ON TOP OF FILTER

SCHEMATIC DIAGRAM

							REQ. ITEM	PART NO.	EATON	DESCRIPTION	SYMBOL	
							STOCK SIZE		THE TECHNICAL MATERIEL CORP. MAMARONECK, NEW YORK			
									CHOKE, FILTER			
							MATERIAL					
							TYPE & TEMPER		HEAT TREAT. SPEC.	H. AUSTIN	JK	FE
							FINISH & SPEC. NO.		ELEC. DES. APP.	MECH. DES. APP.		TF5026
Ø ORIGINAL RELEASE FOR PRODUCTION		4-6-65	H	HLA								
SYM	DESCRIPTION	DATE	CH. NO.	DRAFTS	CHECKER	ENG. APP.						
UNLESS OTHERWISE SPECIFIED DIMENSIONS ARE IN INCHES AND INCLUDE CHEMICALLY APPLIED OR PLATED FINISHES						SCALE						
DECIMALS .X ± .05 .XX ± .01 .XXX ± .005		TOLERANCES		FRACTIONS ± 1/64 ANGLES ± 0° 30'	CODE C	5401-30 (6832)						

REQ. PER UNIT	USED ON			TF5027	Ø
	MODEL	ASS'Y. NO.	DATE		
1	PSPA-1				



INDUCTANCE : 1.5 HENRIES
DC. RESISTANCE : 40 Ω MAX
CURRENT : 300 MA MAX.
INSULATION : 1000 VOLTS

REQ.	ITEM	PART NO.	DESCRIPTION			SYMBOL
			THE TECHNICAL MATERIEL CORP. MAMARONECK. NEW YORK			
		STOCK SIZE	REACTOR, FILTER, 1.5H.			
		5401-30				
		MATERIAL				
Ø	ORIGINAL RELEASE	9/26/69	②			
SYM	DESCRIPTION	DATE	CH. NO.	DRAFTS	CHECKER	ENG. APP.
UNLESS OTHERWISE SPECIFIED DIMENSIONS ARE IN INCHES AND INCLUDE CHEMICALLY APPLIED OR PLATED FINISHES		SCALE				
DECIMALS .X ± .05 .XX ± .01 .XXX ± .005	TOLERANCES	FRACTIONS ± 1/64 ANGLES ± 0° 30'	CODE			
					W.A. PALMER	
		TYPE & TEMPER	HEAT TREAT. SPEC.	DRAWN	CHECKED	FINAL APPROVAL
					W.A. PALMER	TF-5027
		FINISH & SPEC. NO.	ELEC. DES. APP.	MECH. DES. APP.		Ø