

5

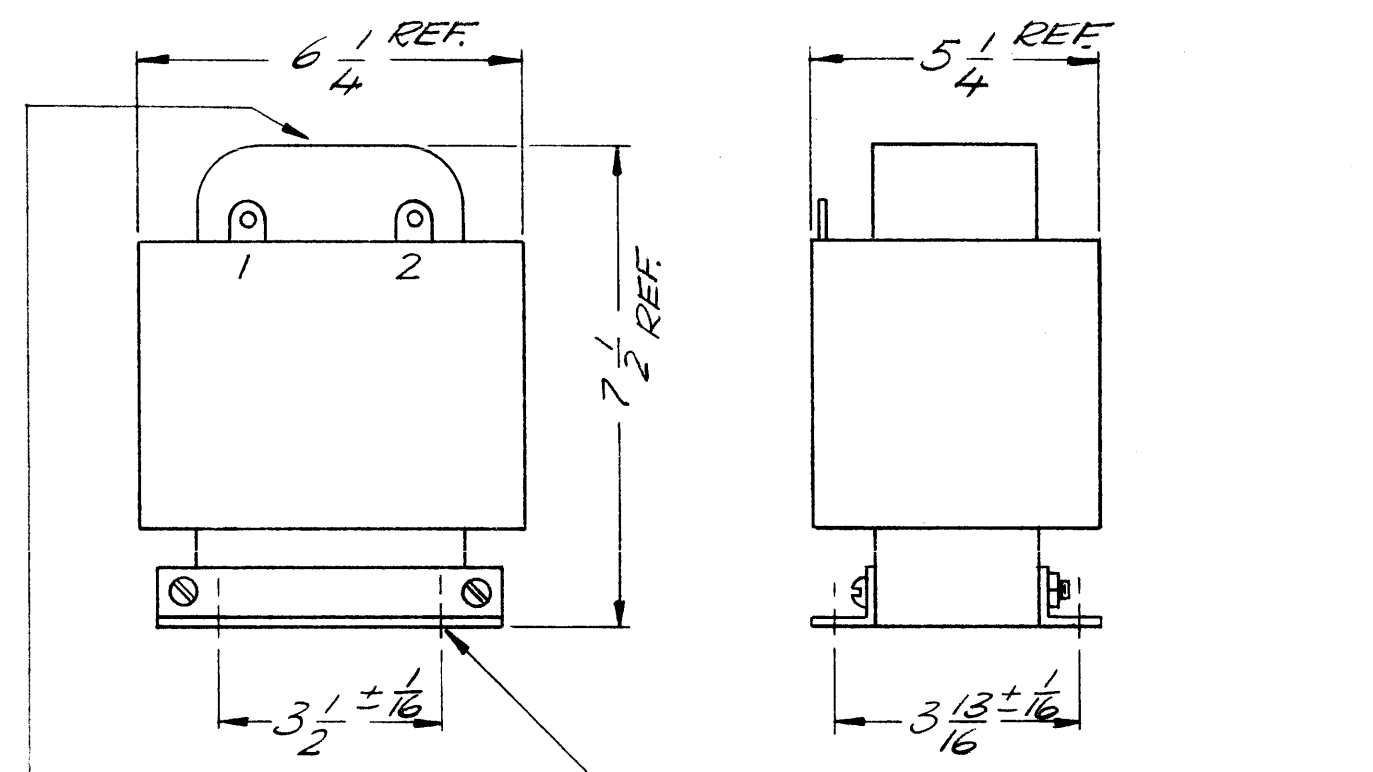
4

3

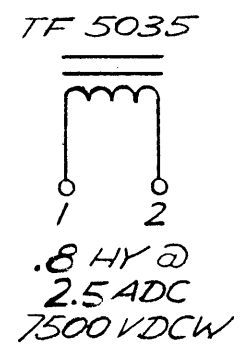
2

1

REVISIONS						
ZONE	LTR	DESCRIPTION	DATE	E.M.N.NO	DRAFT	CHKD APPD
	X	EXP. RELEASE	12/13/69		EH	
	O	ORIGINAL RELEASE	1/11/70		O	
	A	INDUCT. WAS. 2.0HY@1.6ADC	6-27-72	20772	CE	EJ EG



THE TECHNICAL MATERIEL CORP.
MAMARONECK NEW YORK



ELECT. SPECS.

INDUCTANCE: .8 HY AT 2.5 ADC

DC RESISTANCE: 16 Ω APPROX.

INSULATION TEST VOLTAGE: 11500 VRMS

WORKING VOLTAGE: 7,500 VDC

MECH. SPECS.

CASE: OPEN FRAME

FINISH: BLACK MATT

(EXCEPT TERMINALS)

DIMENSIONS: SHOWN PICTORIALY

TERMINALS: SOLDER LUG TYPE

MARKING: ACCORDING TO TMC SPEC S 727
WHITE GOTHIC LETTERING AND LINE WORK.

SCHEMATIC TO BE PLACED AS SHOWN.

NOTE:

MANUFACTURED IN ACCORDANCE WITH MIL-SPEC.
T-27-A, EXCEPT THAT MIL-SPEC. T-27-A
SHALL NOT APPEAR ON CASE AND QUALIFICATION
TESTING IS NOT REQUIRED.

1	PALA-10K	AP 148
QTY / UNIT	MODEL USED ON	ASS'Y NO.
APPLICATION		
	CODE	S401-30 (6239)

NOTICE TO PERSONS RECEIVING THIS DRAWING
THE TECHNICAL MATERIEL CORPORATION claims proprietary right in the material disclosed hereon. This drawing is issued in confidence for engineering information only and may not be reproduced or used to manufacture anything shown hereon without permission from THE TECHNICAL MATERIEL CORPORATION to the user. This drawing is loaned for mutual assistance and is subject to recall at any time.

UNLESS OTHERWISE SPECIFIED
DIMENSIONS ARE IN INCHES
AND INCLUDE CHEMICALLY APPLIED
OR PLATED FINISHES

DECIMALS	FRACTIONS
.X ± .05	TOLS. 1/64
.XX ± .01	ANGLES 0° -30'
.XXX ± .005	

MATERIAL

FINISH

REQ'D	ITEM	PART NUMBER	DESCRIPTION	SYM.
		BUDETTI	LIST OF MATERIAL	
THE TECHNICAL MATERIEL CORP. MAMARONECK, NEW YORK				
REACTOR				
FINAL APPROV.	DATE	THE TECHNICAL MATERIEL CORP. MAMARONECK, NEW YORK		
MECH. DES.	DATE			
ELECT. DES.	DATE			
CHECKED	DATE			
DRAWN	DATE	SIZE	CODE IDENT. NO.	DWG NO.
		B	82679	TF 5035
		SCALE	SHEET	OF
				A

5

4

3

2

1