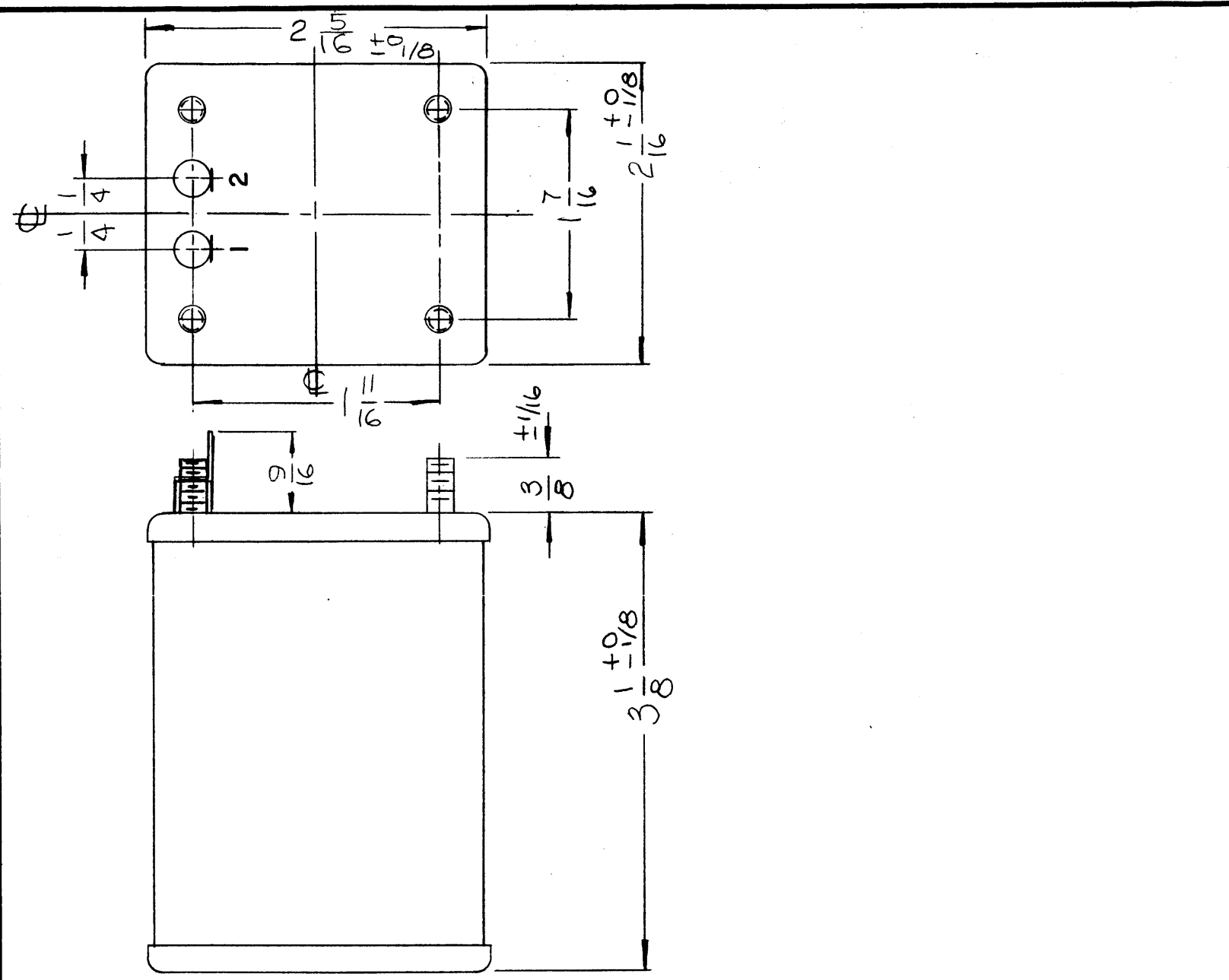


STANDARD DRAWING



TF5030

REVISIONS				
SYM	DESCRIPTION	DATE	E.M.N. NO.	DRAF.
X	EXPERIMENTAL RELEASE	6.2.66	—H	WFW
Ø	ORIGINAL RELEASE FOR PRODUCTION	6-28-66	Ø	GDL

SPECIFICATIONS

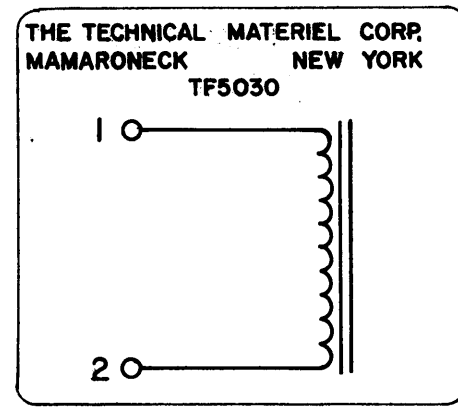
ELECTRICAL:
 INDUCTANCE: 1.5HY ±10%
 DC CURRENT RATING: 300MADC
 DC RESISTANCE: 36Ω APPROX
 INSULATION TEST VOLTAGE: 1KVRMS

MECHANICAL:
 CASE: CR STEEL, HOT TIN DIP, HERMITICALLY SEALED
 FINISH: S115 TMC GRAY (EXCEPT STUD END)
 DIMENSIONS: SHOWN PICTORIALY
 TERMINALS: SOLDER LUG TYPE, CERAMIC STANDOFF
 MTG. STUDS: 6-32 x 3/8 LONG

STAMPING:
 TERMINALS SHALL BE METAL STAMPED AS SHOWN.
 SCHEMATIC DIAGRAM TO BE PLACED ON END OPPOSITE TERMINAL END (AS SHOWN).
 BLACK GOTHIC LETTERING & LINE WORK AS PER TMC SPECIFICATION (S727).

NOTE

MANUFACTURED IN ACCORDANCE WITH MIL-SPEC T-27-A, EXCEPT THAT MIL-SPEC T-27-A SHALL NOT APPEAR ON CASE AND QUALIFICATION TESTING IS NOT REQUIRED



NOTES

1	CFA-2	
Q'TY./UNIT	MODEL USED ON	ASS'Y. NO.
SCALE	CODE	S401-30 (7335)

THE CONTENTS OF THIS DRAWING ARE THE EXCLUSIVE PROPERTY OF THE TECHNICAL MATERIEL CORP. ITS UNAUTHORIZED USE OR REPRODUCTION IN WHOLE OR IN PART IS STRICTLY FORBIDDEN.

REQ'D.	ITEM	PART NUMBER	DESCRIPTION	SYMBOL
DUDDLES LIST OF MATERIAL				
MATERIAL		THE TECHNICAL MATERIEL CORP. MAMARONECK, NEW YORK		
FINISH		TITLE REACTOR		
UNLESS OTHERWISE SPECIFIED DIMENSIONS ARE IN INCHES AND INCLUDE CHEMICALLY APPLIED OR PLATED FINISHES				
DECIMALS	TOLERANCES		FRACTI NS	
.X ± .05			± 1/64	
.XX ± .01			ANGLES	
.XXX ± .005			± 0° 30'	
DRAWN	DATE	FINAL APPROVAL	DATE	
CHECKED	DATE			
ELECT. DES.	DATE			
MECH. DES.	DATE			
			TF5030	Ø
			SHEET	REV. LTR.