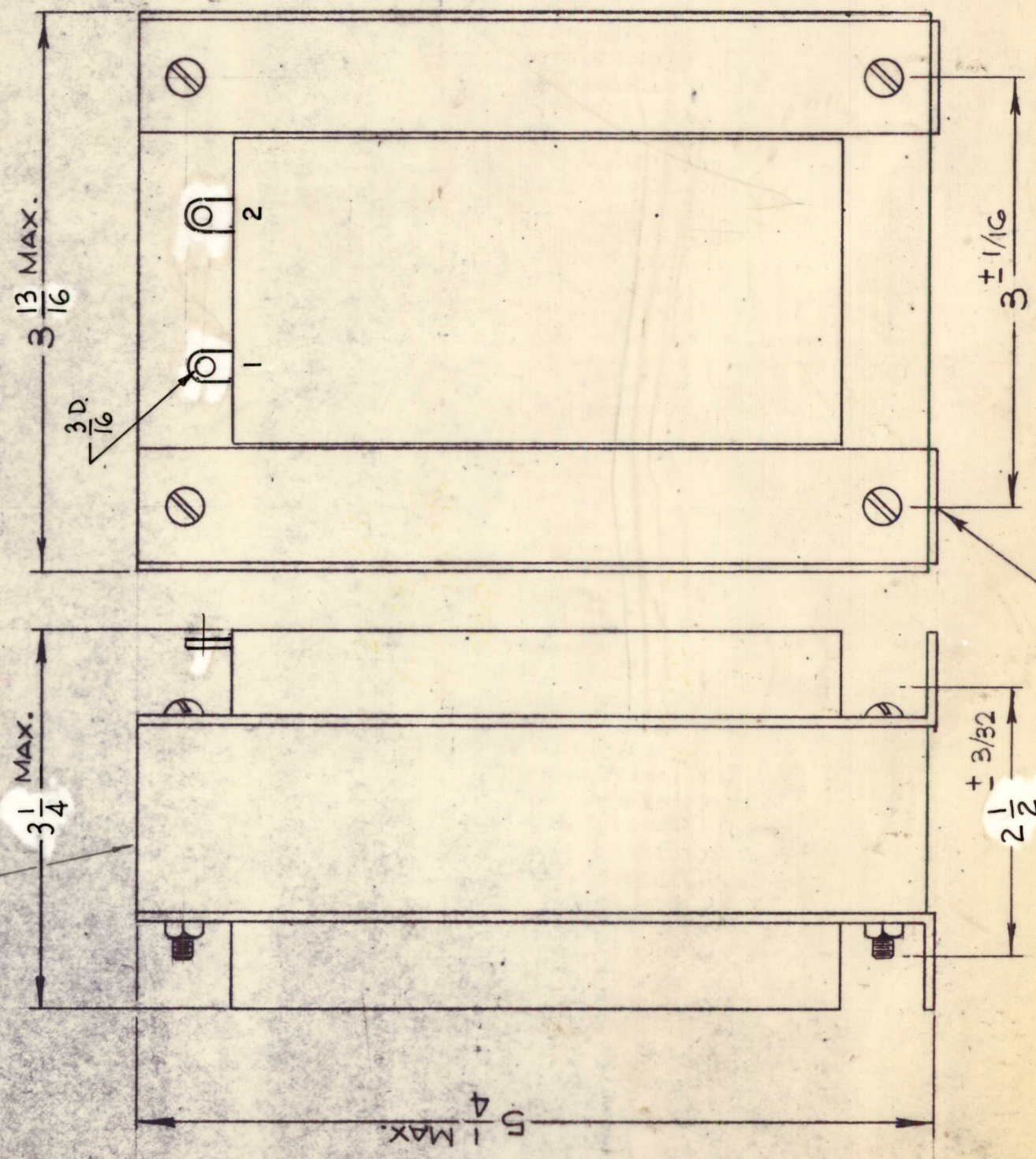


REVISIONS

SYM	DESCRIPTION	DATE	E.M.N. NO.	DRAFT	CHKD	APFD
X1	SPECS & OVERALL SIZE REVISED	6-5-66	X1	L.P.K.		
Ø	ORIGINAL RELEASE FOR PRODUCTION	2-27-67		L.P.K.		

TF 5029

STAMPING



SPECIFICATIONS

INDUCTANCE: 1.7 HY MIN.
 MAXIMUM DC CURRENT - 1.3 ADC
 DC RESISTANCE NOMINAL - 18 OHMS
 INSULATION TEST VOLTAGE - 10,000V ERMS
 WORKING VOLTAGE - 5000 VDC
 CASE - OPEN FRAME
 FINISH: BLACK MATT. (EXCEPT TERMINALS)
 DIMENSIONS: SHOWN PICTORIALY
 TERMINALS: LUGS FOR 8-32 SCREWS
 NOMINAL AMBIENT TEMPERATURE: 50°C
 MARKING: WHITE GOTHIC LETTERING

NOTE: MANUFACTURED IN ACCORDANCE WITH MIL-S-T-27-A, EXCEPT THAT MIL SPEC. T-27-A SHALL NOT APPEAR ON CASE AND QUALIFICATION TESTING IS NOT REQUIRED.

THE TECHNICAL MATERIEL CORPORATION
 MAMARONECK
 TF5029

THE TECHNICAL MATERIEL CORPORATION
 MAMARONECK, NEW YORK

STAMP ON TOP OF REACTOR

REQ'D.	ITEM	PART NUMBER	DESCRIPTION	SYMBOL
	BUDETTI		LIST OF MATERIAL	
	MATERIAL		THE TECHNICAL MATERIEL CORP. MAMARONECK, NEW YORK	
	FINISH		REACTOR	

UNLESS OTHERWISE SPECIFIED DIMENSIONS ARE IN INCHES AND INCLUDE CHEMICALLY APPLIED OR PLATED FINISHES	DATE	DATE	DATE	DATE	DATE
DRAWN G.D.L.	4-29-66				
CHECKED					
ELECT. DESIGNED					
MECH. DESIGNED					

DECIMALS	FRACTIONS	TOLERANCES	ANGLES
.XX ± .01	± 1/64	± .005	± 0° 30'

QTY./UNIT	AP-129	MODEL USED ON	A5476
SCALE		CODE	S401-30 (7358)

THE CONTENTS OF THIS DRAWING ARE THE EXCLUSIVE PROPERTY OF THE TECHNICAL MATERIEL CORP. ITS UNAUTHORIZED USE OR REPRODUCTION IN WHOLE OR IN PART IS STRICTLY FORBIDDEN.

NOTES