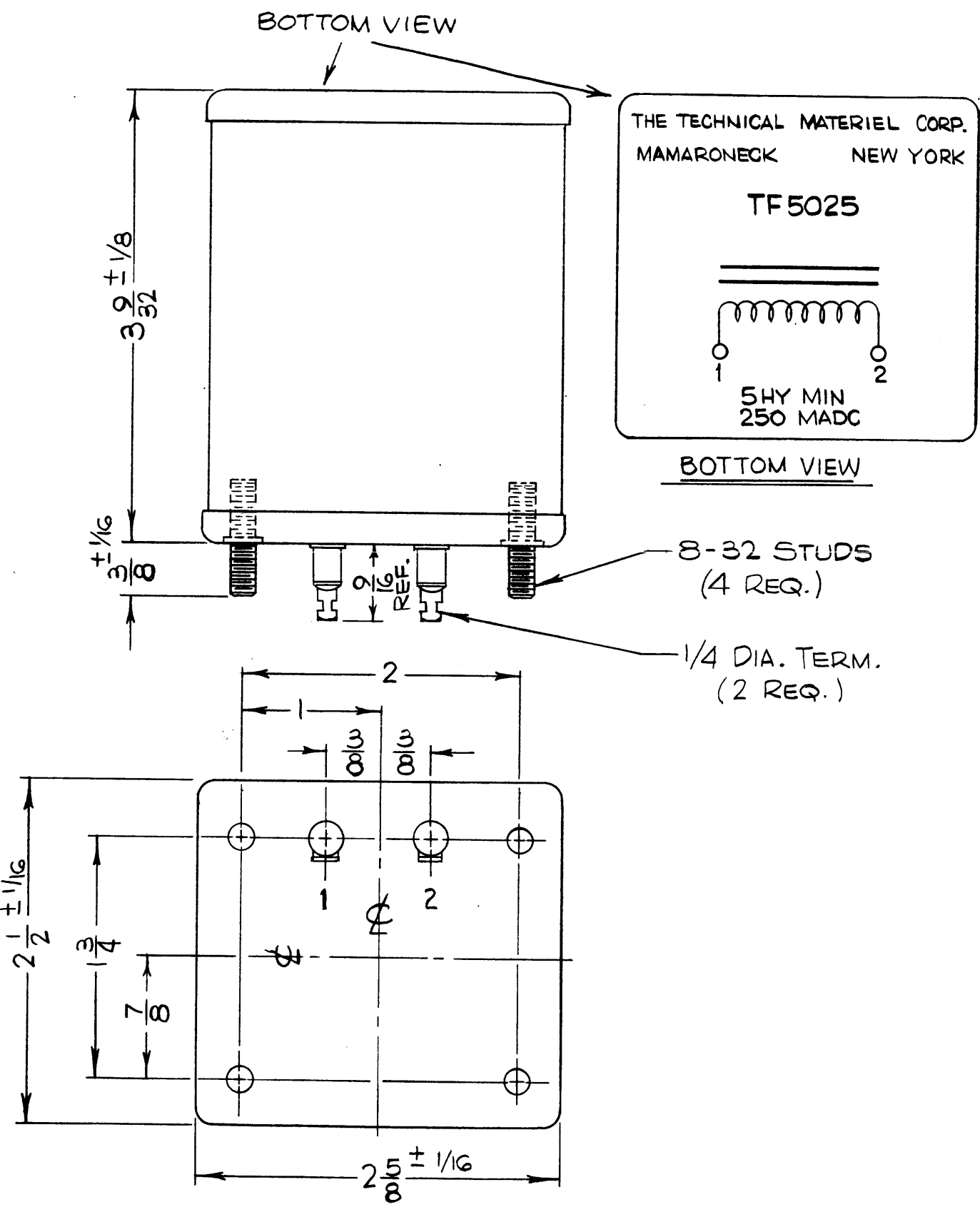


# STANDARD DRAWING

A  
TF5025

REVISIONS						
SYM	DESCRIPTION	DATE	E.M.N. NO.	DRAFT	CHKD	APPD
XI	90 OHMS ADDED TO DC RES. NOM.	10/4/65	M	JC		
0	ORIGINAL RELEASE FOR PROD	10/26/65				
A	ADDED LETTERING 1 & 2 TO TERM	8-11-66	16732	RME		



**SPECIFICATIONS:**

**INDUCTANCE:** 5 HY MINIMUM  
**MAXIMUM DC CURRENT:** 250 MADC  
**DC RESISTANCE NOMINAL:** 90 OHMS  
**INSULATION TEST VOLTAGE:** 1500 V DC  
**WORKING VOLTAGE:** 450V, 120 CPS; 30V, 400 CPS  
**CASE:** RECTANGULAR STEEL, HERMETICALLY SEALED  
**FINISH:** S-115 TMC SMOOTH GRAY ENAMEL (EXCEPT STUD END)  
**DIMENSIONS:** SHOWN PICTORIALY  
**TERMINALS:** SOLDER LUG TYPE, CERAMIC STANDOFF  
**NOMINAL AMBIENT TEMPERATURE:** 50°C

**STAMPING:**

TERMINALS SHALL BE METAL STAMPED 1-2 AS SHOWN. SCHEMATIC DIAGRAM TO BE PLACED ON END OPPOSITE TERMINAL END, AS SHOWN. BLACK GOTHIC LETTERING AND LINE WORK.

**NOTE:**

MANUFACTURED IN ACCORDANCE WITH MIL-SPEC. T-27-A, EXCEPT THAT MIL SPEC. T-27-A SHALL NOT APPEAR ON CASE AND QUALIFICATION TESTING IS NOT REQUIRED.

REQ'D.	ITEM	PART NUMBER	DESCRIPTION	SYMBOL
--------	------	-------------	-------------	--------

<b>BUDETTI</b>	<b>LIST OF MATERIAL</b>
MATERIAL	<b>THE TECHNICAL MATERIEL CORP. MAMARONECK, NEW YORK</b>
FINISH	<b>REACTOR</b>

UNLESS OTHERWISE SPECIFIED DIMENSIONS ARE IN INCHES AND INCLUDE CHEMICALLY APPLIED OR PLATED FINISHES		DRAWN H. AUSTIN	DATE 9-21-65	FINAL APPROVAL <i>[Signature]</i>	DATE 10/21/65
		CHECKED <i>[Signature]</i>	DATE 10/5/65	<b>TF5025</b> A	
		ELECT. DES. <i>[Signature]</i>	DATE 11/19/66		
		MECH. DES. <i>[Signature]</i>	DATE 10/26/65	SHEET REV. LTR.	
		M/L <i>[Signature]</i>	DATE 10/25/65		

2	AP128	A5256
Q'TY./UNIT	MODEL USED ON	ASS'Y. NO.
SCALE —A—	CODE C	S401-30 (GG25)

**NOTES**

THE CONTENTS OF THIS DRAWING ARE THE EXCLUSIVE PROPERTY OF THE TECHNICAL MATERIEL CORP. ITS UNAUTHORIZED USE OR REPRODUCTION IN WHOLE OR IN PART IS STRICTLY FORBIDDEN.