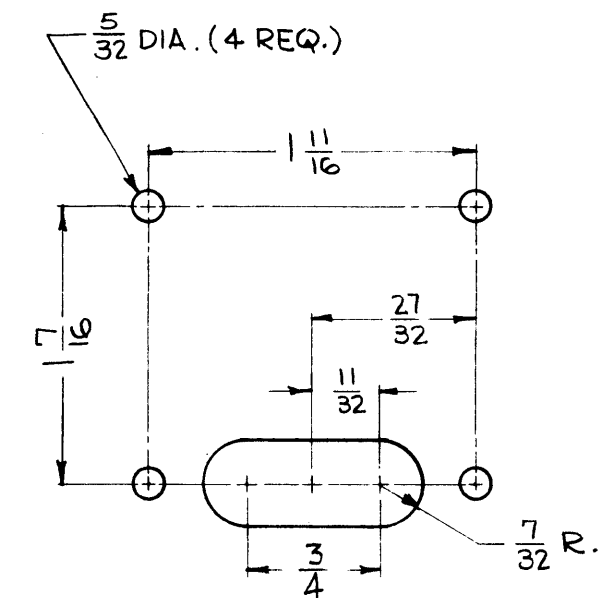
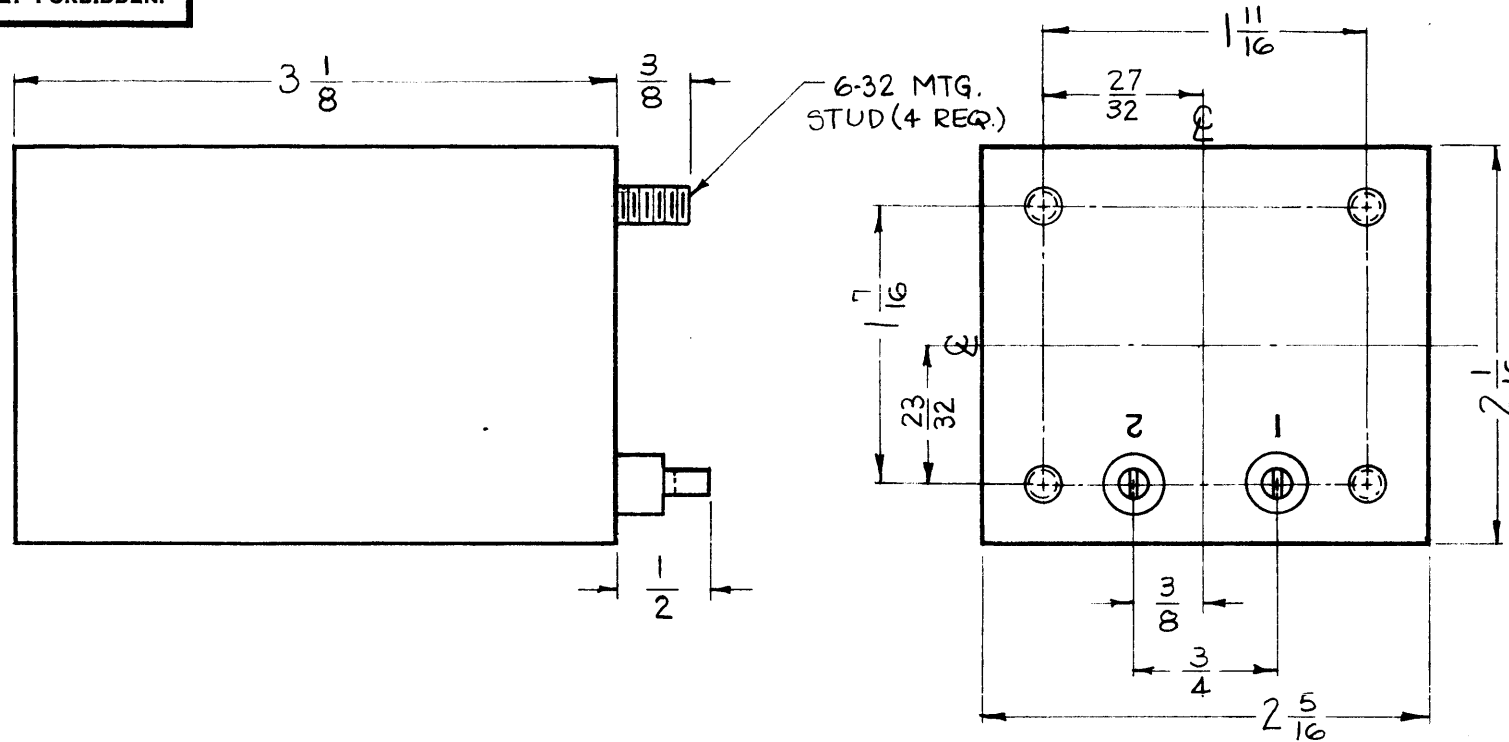


THE CONTENTS OF THIS DRAWING ARE THE EXCLUSIVE PROPERTY OF THE TECHNICAL MATERIEL CORP. ITS UNAUTHORIZED USE OR REPRODUCTION IN WHOLE OR IN PART IS STRICTLY FORBIDDEN.

TF-5017

THE TECHNICAL MATERIEL CORPORATION
MAMARONECK, NEW YORK
TF-5017

8 HY
160 MA



MOUNTING DETAIL

S P E C I F I C A T I O N S

STAMPING -

TERMINALS SHALL BE METAL STAMPED 1-2 AS SHOWN.
SCHEMATIC DIAGRAM TO BE PLACED ON END OPPOSITE TERMINAL END, AS SHOWN.
BLACK GOTHIC LETTERING AND LINE WORK.

INDUCTANCE - 8 hy AT 160 MADC AT 120 cps

MAXIMUM DC CURRENT - 160 MA

DC RESISTANCE NOMINAL - 180 OHMS

INSULATION TEST VOLTAGE - 1500 V DC

CASE - RECTANGULAR STEEL, HERMETICALLY SEALED

FINISH - S-115 TMC SMOOTH GRAY ENAMEL (EXCEPT STUD END)

DIMENSIONS - SHOWN PICTORIALY

TERMINALS - SOLDER LUG TYPE, CERAMIC STANDOFF

NOMINAL AMBIENT TEMPERATURE 50°C.

NOTE: MANUFACTURED IN ACCORDANCE WITH MIL SPEC T-27-A, EXCEPT THAT MIL SPEC T-27-A SHALL NOT APPEAR ON CASE AND QUALIFICATION TESTING IS NOT REQUIRED.

SYM	DESCRIPTION	DATE	CH. NO.	DRAFTS	CHECKER	ENG. APP.
UNLESS OTHERWISE SPECIFIED:						
DIMENSIONS ARE IN INCHES		SCALE: FULL				
TOLERANCES ON FRACTIONS ± 1/64 DECIMALS ± .005 ANGLES ± 1/2°		MAXIMUM ALLOWABLE TOLERANCES HAVE BEEN DETERMINED AND ANY DEVIATIONS WILL BE CAUSE FOR REJECTION. REMOVE ALL BURRS AND SHARP EDGES				

REQ. PER UNIT	MODEL	SECTION	ASS'Y. NO.	DATE
1	TTR-10	PWR SUPPLY	AX-413	6-6-63
2	LFA-4			4-30-63

USED ON

REQ.	ITEM	PART NO.	O. POSE	DESCRIPTION	R. KOHN	SYMBOL
THE TECHNICAL MATERIEL CORP. MAMARONECK, NEW YORK						
REACTOR						
MATERIAL						
TYPE & TEMPER			HEAT TREAT. SPEC.		DRAWN CHECKED	
FINISH & SPEC. NO.			ELEC. DES. APP.		MECH. DES. APP.	
			R. KOHN 6/6/63		BP TF-5017	