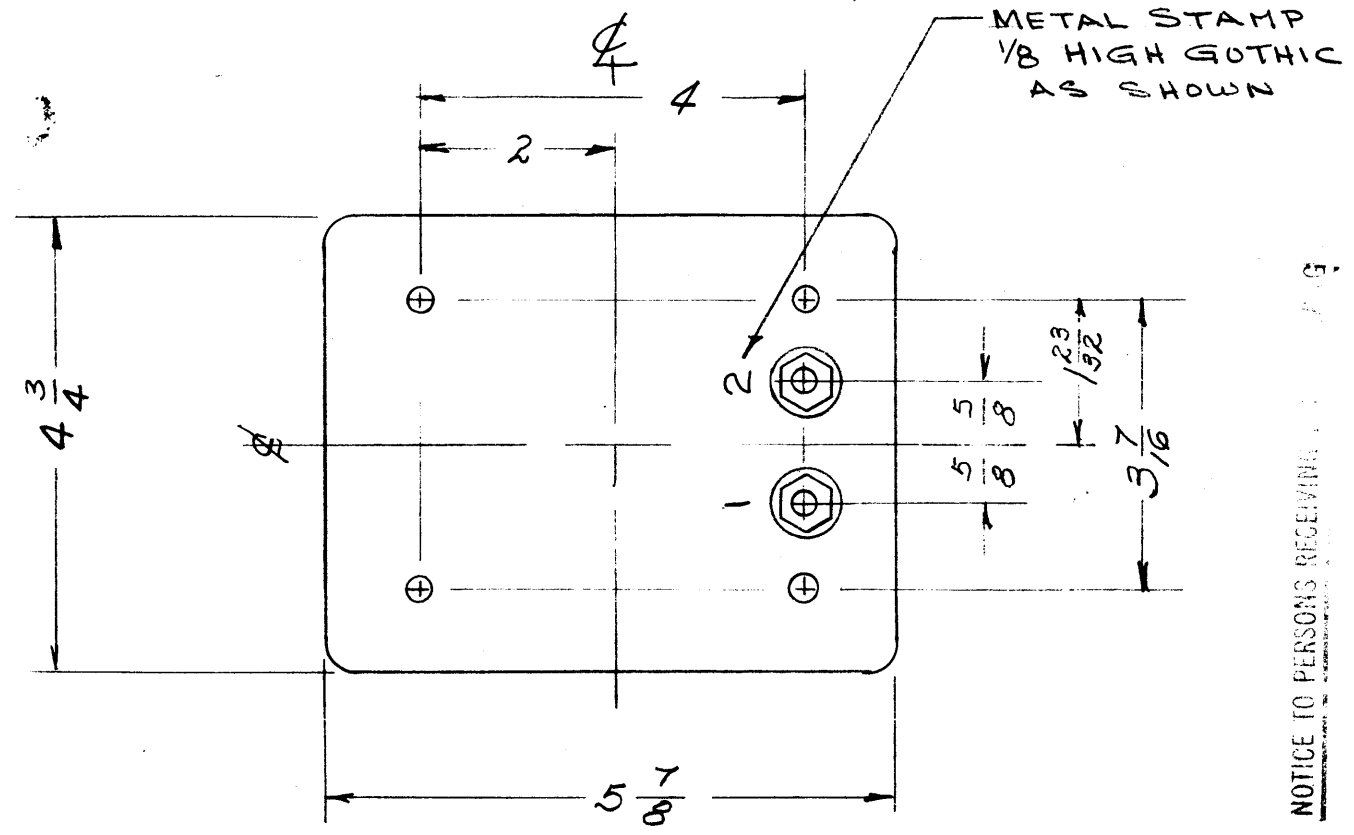


TF-5012 G

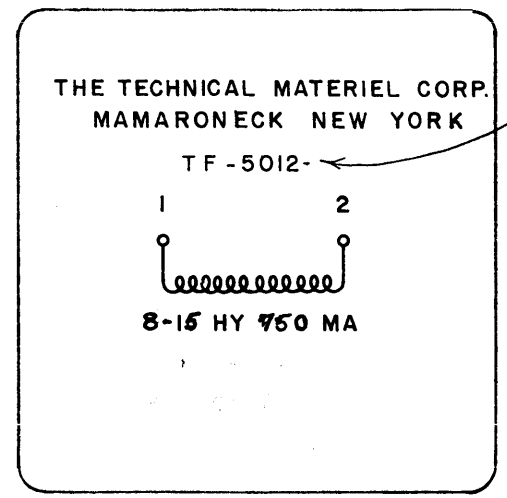


**ELECTRICAL SPECIFICATIONS:**

INDUCTANCE - 8 HY @ 750 MA, 15 HY @ 100 MA  
 D.C. RESISTANCE - APPROX. 42 Ω  
 INSULATION BREAKDOWN TEST VOLTAGE 10,000 VOLTS

NOTICE TO PERSONS RECEIVING THIS DRAWING:  
 THE TECHNICAL MATERIEL CORP. PROPRIETARY RIGHTS RESERVED. THIS DRAWING IS THE PROPERTY OF THE TECHNICAL MATERIEL CORP. AND IS LOANED TO YOU FOR YOUR INFORMATION ONLY. IT IS NOT TO BE REPRODUCED OR TRANSMITTED IN ANY FORM OR BY ANY MEANS, ELECTRONIC OR MECHANICAL, INCLUDING PHOTOCOPYING, RECORDING, OR BY ANY INFORMATION STORAGE AND RETRIEVAL SYSTEM, WITHOUT THE WRITTEN PERMISSION OF THE TECHNICAL MATERIEL CORP. THIS DRAWING IS THE PROPERTY OF THE TECHNICAL MATERIEL CORP. AND IS LOANED TO YOU FOR YOUR INFORMATION ONLY. IT IS NOT TO BE REPRODUCED OR TRANSMITTED IN ANY FORM OR BY ANY MEANS, ELECTRONIC OR MECHANICAL, INCLUDING PHOTOCOPYING, RECORDING, OR BY ANY INFORMATION STORAGE AND RETRIEVAL SYSTEM, WITHOUT THE WRITTEN PERMISSION OF THE TECHNICAL MATERIEL CORP.

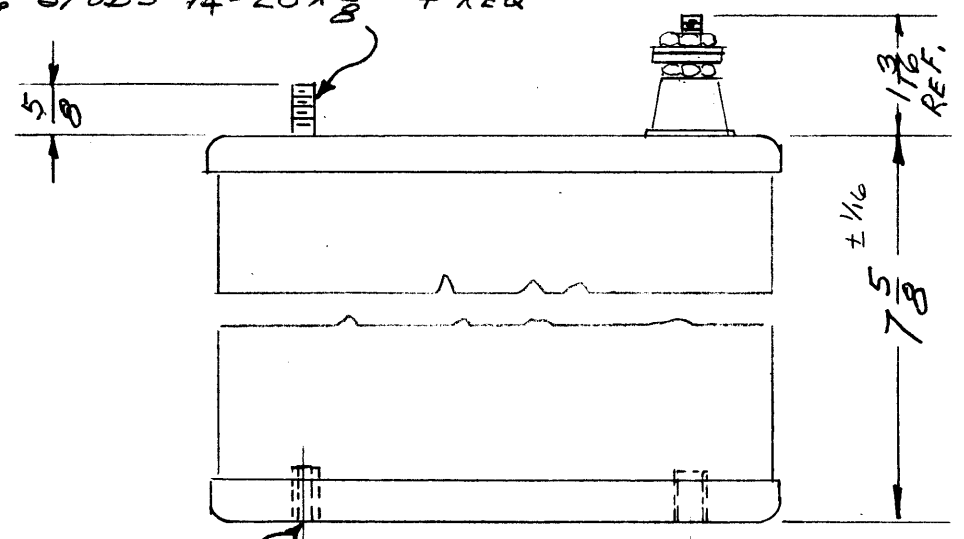
Property of:  
 THE TECHNICAL MATERIEL CORPORATION  
 MAMARONECK, NEW YORK



MARK TMC PT. NO. W/LATEST REVISION LETTER.

NOTE SCHEMATIC DIAGRAM TO APPEAR ON END OPPOSITE TERMINAL END  
 COLOR - BLACK

MOUNTING STUDS 1/4-20 X 5/8 4 REQ



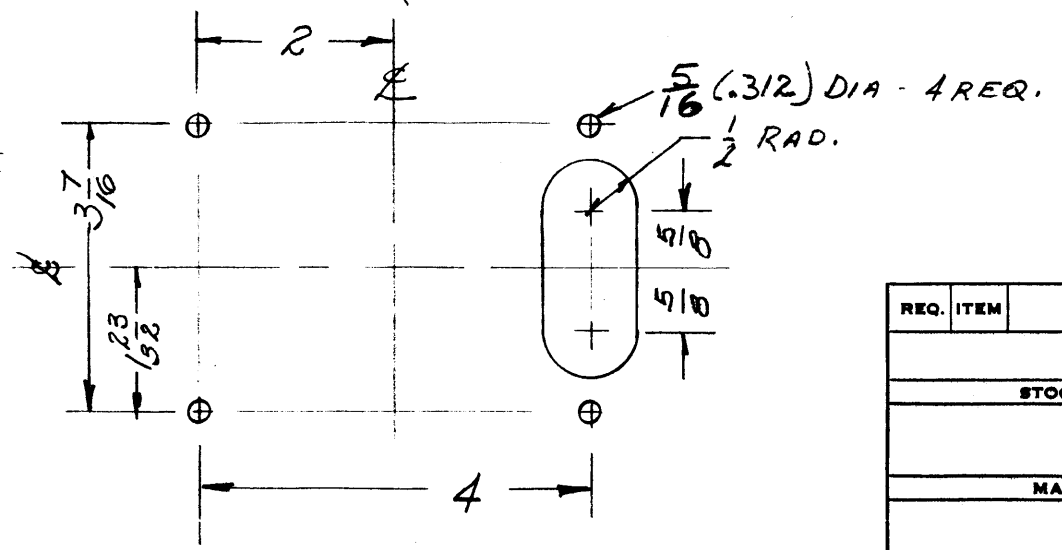
**MECHANICAL SPECIFICATIONS:**

CASE - HERMETICALLY SEALED RECTANGULAR STEEL CASE  
 FINISH - S-115 TMC SMOOTH GRAY ENAMEL, EXCEPT TERMINAL END.  
 SIZE - 5 1/4 X 5 7/8 X 7 5/8 HIGH; EXCLUSIVE OF TERMINALS  
 POTTING COMPOUND - SAND & WAX

NOTE: MANUFACTURED IN ACCORDANCE WITH MIL SPEC T-27-A EXCEPT THAT MIL SPEC T-27-A SHALL NOT APPEAR ON CASE AND QUALIFICATION TESTING IS NOT REQUIRED.

INSERTS 1/4-20 X 1/2 DEEP 4 REQ  
 (SEE DRILLING PLAN FOR INSERT LAYOUT)

**DRILLING PLAN**



ISSUE	ITEM	CHANGED FROM	DATE	CH. NO.	DRAFTS	CHECKER	ENG. APP.
G		ADD TMC PT. NO. REV. NOTE	11/10/66	CC	RME	[Signature]	[Signature]
F	1	POTTING COMPOUND ADD. TO SPECS.	4-15-65	13889	gl.	[Signature]	[Signature]
E	1	SEE EMN #10903	2/14/64	10903	A.M.	T.R.	[Signature]

TOLERANCES: DEC. DIM. ± 1/64, FRAC. DIM. ± 1/64, ANGULAR DIM. ±

SCALE: 2-1247

MAXIMUM ALLOWABLE TOLERANCES HAVE BEEN DETERMINED AND ANY DEVIATIONS WILL BE CAUSE FOR REJECTION. REMOVE ALL BURRS AND SHARP EDGES

REQ. PER UNIT	MODEL	PROJECT NO.	ASS'Y. N.	DATE
1	RTP-2			

USED ON

REQ. ITEM	PART NO.	DESCRIPTION	SYMBOL
		THE TECHNICAL MATERIEL CORP. MAMARONECK, NEW YORK	
		REACTOR, FILTER	
		SWINGING	
		TYPE & TEMPER	HEAT TREAT. SPEC.
		FINISH & SPEC. NO.	

DRAWN: [Signature] CHECKED: [Signature] FINAL APPROVAL: A.J.S. TF-5012 G