

5

4

3

2

1

REVISIONS					DATE	APPROVED
E.M.N. NO.	DRAFT	CHKD	ZONE	LTR	DESCRIPTION	

TRANSFORMER, Audio. TF456

ELECTICAL RATING

IMPEDANCE SOURCE	15,000 OHMS
LOAD	95,000 OHMS
POWER LEVEL	MAXIMUM 10 DBm
LIFE EXPECTANCY	MINIMUM 10,000 HOURS
ALTITUDE	MAXIMUM 10,000 FEET
OPERATING TEMPERATURE	60 DEGREES C WITH 40 DEGREE C HEAT RISE
WORKING VOLTAGE	175 VOLTS
FREQUENCY RANGE	350-7000 CPS + OR - 2DB

PHYSICAL CHARACTERISTICS

CASE SIZE	MAXIMUM 8 OUNCES
WEIGHT	METHOD 2 50 G
SHOCK	MINIMUM 18 AWG
TERMINALS SOLDER LUG	MAXIMUM 0.375 INCHES
TERMINAL HEIGH	

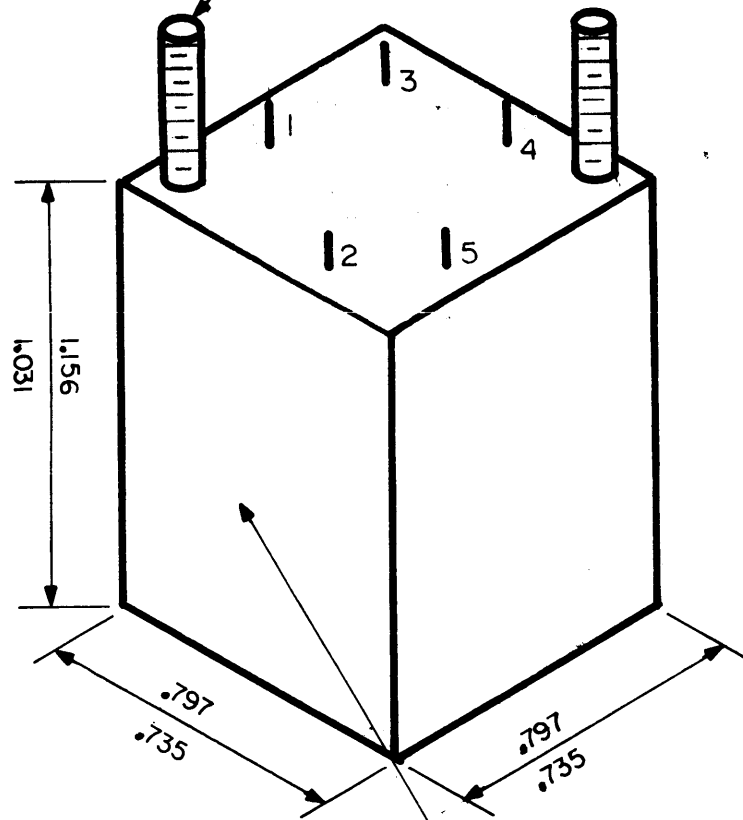
ELECTRICAL PROPERTIES

HARMONIC DISTORTION	MAXIMUM 5% WITH 3.0 MA. DC IN PRIMARY
PRIMARY IMPEDANCE	MINIMUM 2K-OHMS WITH 3.0 VOLTS 60 CPS 3.0 MA. DC
FREQUENCY RESPONSE	MINIMUM 350-7000 CPS + OR - 2 DB
RATED LOAD	
ELECTROSTATIC SHIELDING	MINIMUM VOLTAGE RATIO 5 TO 1 AT 20 KHZ
POLARITY	ADDITIVE WITH 2 AND 3 CONNECTED
RESONANCE	OPEN CIRCUIT PRIMARY RESONANCE 1.4KHZ TO 4.5 KHZ

NOTES

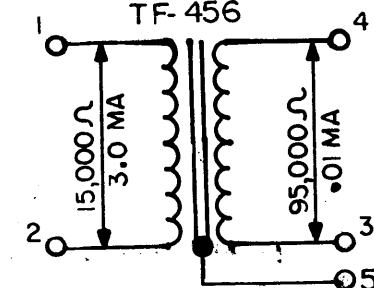
- TRANSFORMER TO CONFORM TO ALL REQUIREMENTS OF MIL-T-27A MODIFIED AS LISTED BELOW
- TERMINAL ARRANGEMENT OPTIONAL WITHIN MOUNTING AREA INDICATED ON THE TEMPLATE BUT TERMINALS MUST MAINTAIN A MINIMUM CLEARANCE OF .060 TO CHASSIS.
- MOUNTING HARDWARE NOT SUPPLIED
- PRESERVATION, PACKAGING, PACKING AND MARKING FOR DOMESTIC SHIPMENT FOR IMMEDIATE USE.
- MARKING MUST INCLUDE TYPE TF4RX20YY CIRCUIT DIAGRAM AND BUREAU OF ORDNANCE DRAWING NO. 1626636.
- CASE YY SAME DIMENSIONS AS TYPE AF CASE EXCEPT FOR MOUNTING STUD LOCATION

440NC. X.38
(2 STUDS)

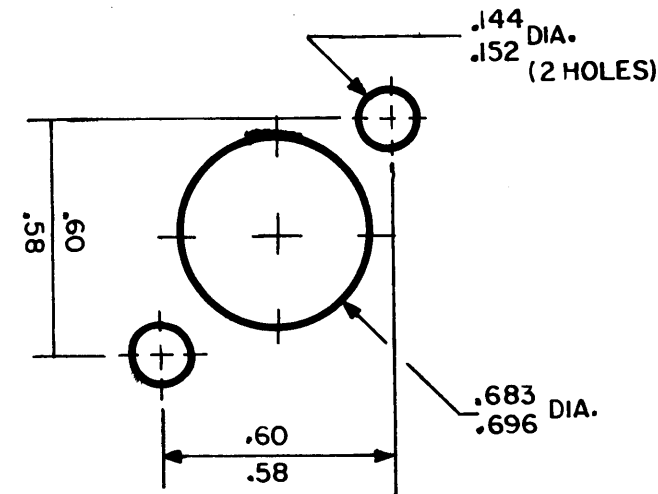


CIRCUIT DIAGRAM & MARKING ON THIS SIDE

TECHNICAL MATERIEL CORPORATION
MAMARONECK, NY 82679
TF-456



BUORD NO.1626636
TF4RX20YY
CIRCUIT DIAGRAM & MARKING



TEMPLATE CHASSIS CUTOUT

REQ'D	ITEM	PART NUMBER	DESCRIPTION	SYM.
LIST OF MATERIAL				
THE TECHNICAL MATERIEL CORP. MAMARONECK, NEW YORK				
TRANSFORMER REF. BUORD. 1626636				
SIZE	CODE IDENT. NO.	DWG NO.	ISSUE	
B	82679	TF456		
SCALE	SHEET		OF	

UNLESS OTHERWISE SPECIFIED DIMENSIONS ARE IN INCHES AND INCLUDE CHEMICALLY APPLIED OR PLATED FINISHES

DECIMALS	FRACTIONS
.X ± .05	1/64
.XX ± .01	TOLS. ANGLES
.XXX ± .005	0° .30'

MATERIAL

FINISH

FINAL APPROVAL	DATE
<i>[Signature]</i>	4/86
MECH. DES.	DATE
ELECT. DES.	DATE
CHECKED	DATE
DRAWN	DATE
RAW	4-86

QTY / UNIT	MODEL USED ON	ASS'Y NO.
APPLICATION		
CODE		

NOTICE TO PERSONS RECEIVING THIS DRAWING
THE TECHNICAL MATERIEL CORPORATION claims proprietary right in the material disclosed hereon. This drawing is issued in confidence for engineering information only and may not be reproduced or used to manufacture anything shown hereon without permission from THE TECHNICAL MATERIEL CORPORATION to the user. This drawing is loaned for mutual assistance and is subject to recall at any time.