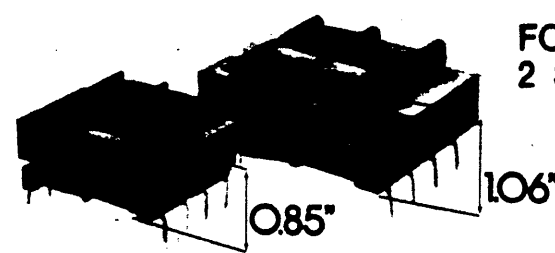


REVISIONS

E.M.N. NO.	DRAFT	CHKD	ZONE	LTR	DESCRIPTION	DATE	APPROVED
21890	RU	RU			REDRAWN & CLARIFIED ON (B) SIZE	8-28-81	

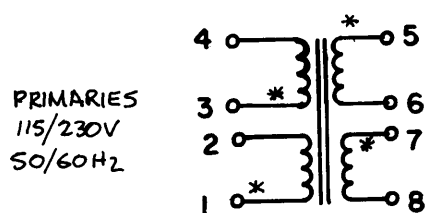
TMC PART NO.	Part No.	Size	SECONDARY*		USED ON
			Series	Parallel	
TF447- TF447-2	LP 16-700	12	16V C.T. @ 700MA	8V @ 1.4A	AMC-8A
	LP 16-350	6	16V C.T. @ 350MA	8V @ 700MA	
	LP 12-450	6	12.6V C.T. @ 450MA	6.3V @ 900MA	
	LP 12-900	12	12.6V C.T. @ 900MA	6.3V @ 1.8A	
	LP 10-600	6	10V C.T. @ 600MA	5V @ 1.2A	
	LP 10-1200	12	10V C.T. @ 1200MA	5V @ 2.4A	
	LP 20-300	6	20V C.T. @ 300MA	10V @ 600MA	
	LP 20-600	12	20V C.T. @ 600MA	10V @ 1.2A	
	LP 24-250	6	24V C.T. @ 250MA	12V @ 500MA	
	LP 24-500	12	24V C.T. @ 500MA	12V @ 1A	
	LP 34-170	6	34V C.T. @ 170MA	17V @ 340MA	
	LP 34-340	12	34V C.T. @ 340MA	17V @ 680MA	
	LP 40-150	6	40V C.T. @ 150MA	20V @ 300MA	
	LP 40-300	12	40V C.T. @ 300MA	20V @ 600MA	
	LP 56-100	6	56V C.T. @ 100MA	28V @ 200MA	
	LP 56-200	12	56V C.T. @ 200MA	28V @ 400MA	
	LP 88-65	6	88V C.T. @ 65MA	44V @ 130MA	
	LP 88-130	12	88V C.T. @ 130MA	44V @ 260MA	
	LP 120-50	6	120V C.T. @ 50MA	60V @ 100MA	
	LP 120-100	12	120V C.T. @ 100MA	60V @ 200MA	
LP 230-25	6	230V C.T. @ 25MA	115V @ 50MA		
LP 230-50	12	230V C.T. @ 50MA	115V @ 100MA		

Regulation of Size 6 units is 30%, i.e., no load-secondary voltage is 30% higher than full load.  
Regulation of Size 12 units is 20%.



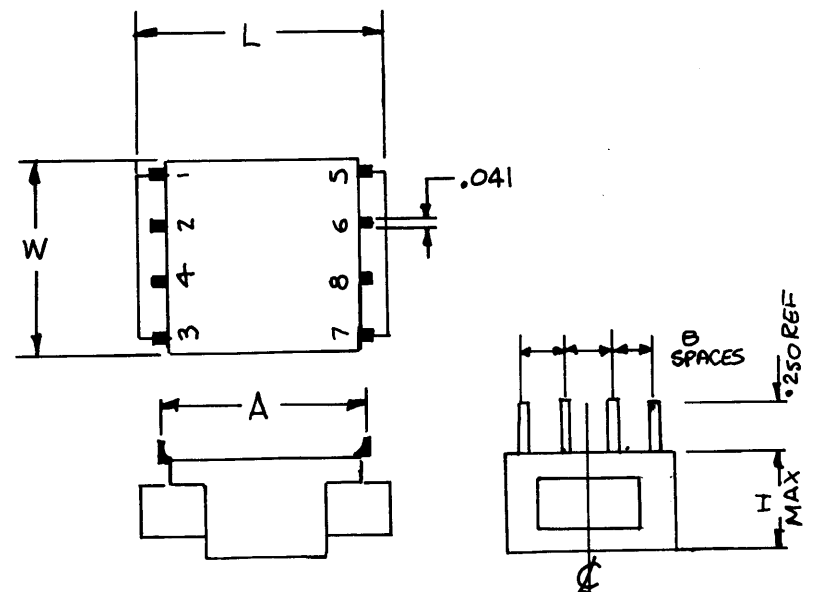
FOR PRINTED CIRCUIT APPLICATIONS  
2 SIZES — 6VA — 0.850 inches high  
12VA — 1.065 inches high

**LOW PROFILE:** Allows 1 inch card spacing for 6va units or 1 1/4 inch card spacing for 12va units.  
**DUAL PRIMARIES:** 115/230v, 50/60 Hz.  
**NON-CONCENTRIC WINDING:** Where secondary is wound alongside primary rather than directly over it. This added isolation reduces inter-winding capacitance and eliminates the need for an electro-static shield.  
**1500V. RMS HIPOT:** Is standard because of the advantage of non-concentric windings.  
**HUM-BUCKING CONSTRUCTION:** (Semi-toroidal) results in reduced radiated magnetic field and balanced windings.  
The LP line of transformers is ideal for low height, critical pc board power applications in semi-conductor control and instrumentation. They are used extensively in single or dual output dc supplies and isolated control circuit and reference supplies.



PRIMARIES  
115/230V  
50/60Hz

\* INDICATES LIKE POLARITY



SIZE	L	W	H	A	B	Oz
6	1 7/8	1 9/16	.850	1.600	.375	7
12	2 1/2	2	1.065	2.000	.500	11

2	AMC-8A	A5782
QTY / UNIT	MODEL USED ON	ASS'Y NO.

APPLICATION	
CODE	S401-SIGNAL TRANSFORMER

**NOTICE TO PERSONS RECEIVING THIS DRAWING**  
THE TECHNICAL MATERIEL CORPORATION claims proprietary right in the material disclosed hereon. This drawing is issued in confidence for engineering information only and may not be reproduced or used to manufacture anything shown hereon without permission from THE TECHNICAL MATERIEL CORPORATION to the user. This drawing is loaned for mutual assistance and is subject to recall at any time.

UNLESS OTHERWISE SPECIFIED DIMENSIONS ARE IN INCHES AND INCLUDE CHEMICALLY APPLIED OR PLATED FINISHES		FINAL APPROVAL	DATE
DECIMALS .X ± .05 .XX ± .01 .XXX ± .005	FRACTIONS 1/64 ANGLES 0° -30'	MECH. DES.	DATE
MATERIAL		ELECT. DES.	DATE
FINISH		CHECKED	DATE
		DRAWN	DATE

REQ'D	ITEM	PART NUMBER	DESCRIPTION	SYM.
LIST OF MATERIAL				
THE TECHNICAL MATERIEL CORP. MAMARONECK, NEW YORK				
TRANSFORMER POWER				
SIZE	CODE IDENT. NO.	DWG NO.	ISSUE	
B	82679	TF447	A	
SCALE			SHEET OF	