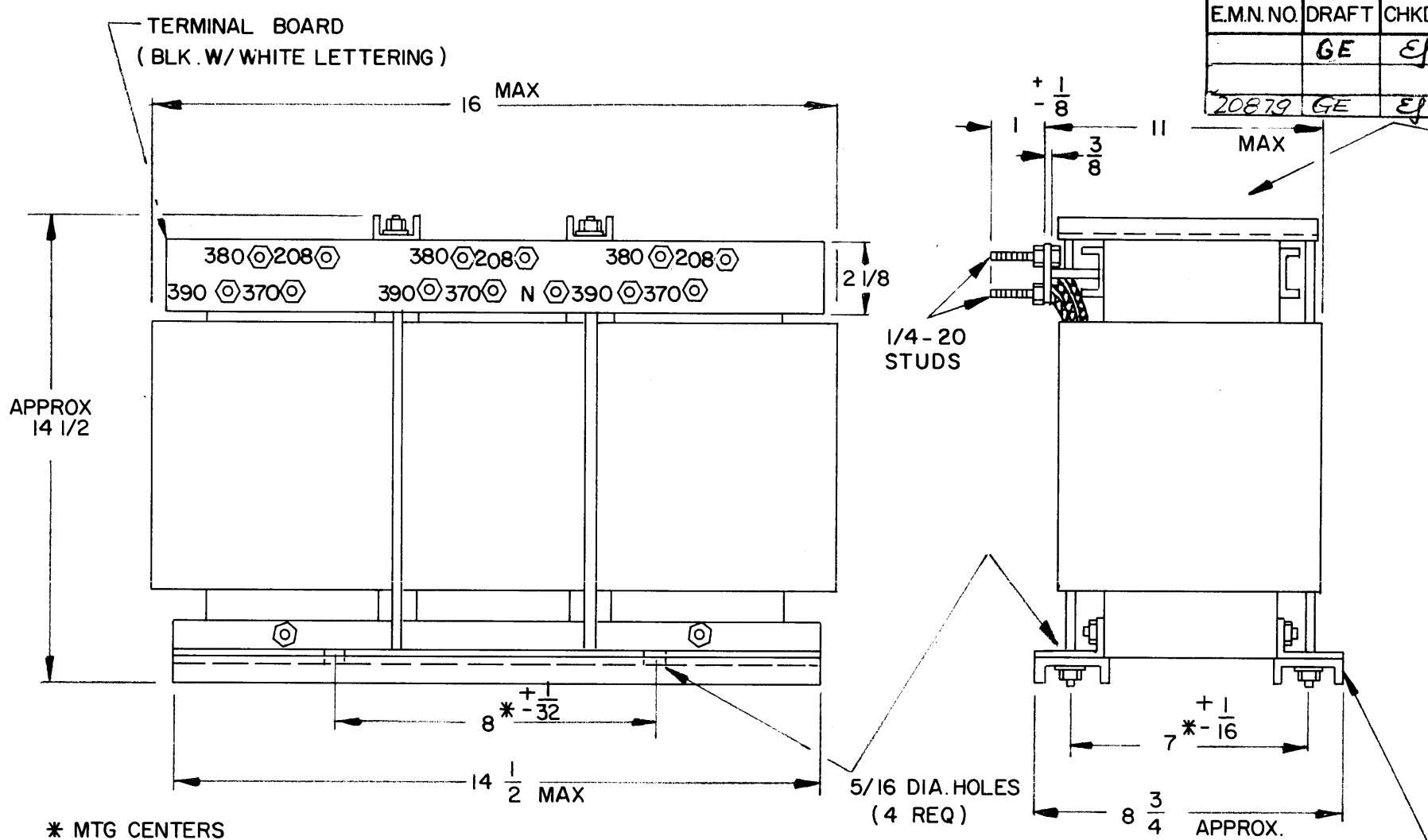
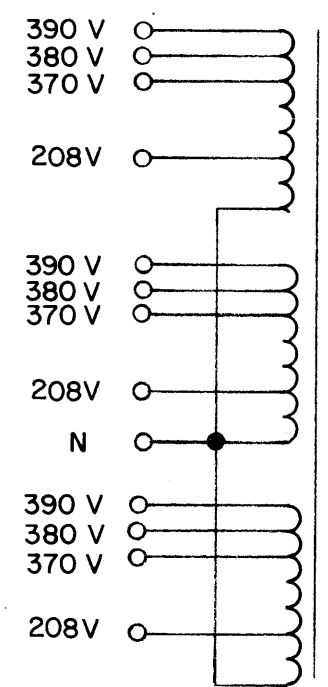


REVISIONS							
EM.N.NO.	DRAFT	CHKD	ZONE	LTR	DESCRIPTION	DATE	APPROVED
	GE	EJ		A	7* WAS 5* - 8 3/4 WAS 6 3/4 &	3/23/72	EJ
					COMPLETELY REDRAWN (ORIG. DESTROYED)		
20879	GE	EJ		B	208V WAS 230V	9/18/72	EJ



THE TECHNICAL MATERIEL CORPORATION
MAMARONECK NEW YORK

TF419



SCHEMATIC TO BE STAMPED ON XMTR, IN WHITE

SPECIFICATIONS

WINDING DATA:

- INPUT: 390, 380, 370 VAC, 50HZ, 3PH
- OUTPUT VOLTAGE: 208 VAC, NEUTRAL
- OUTPUT CURRENT RATING: 100 AMP, RMS
- BREAKDOWN TEST VOLTAGE: 2000 VAC
- CASE: OPEN FRAME
- FINISH: S115 SMOOTH GREY ENAMEL EXCEPT TERMINAL BOARDS & TERMINALS
- TERMINAL BOARD 3/8" THICK

NOTE:
MFG: IN ACCORDANCE WITH MIL-T-27A EXCEPT THAT MIL-T-27A SHALL NOT APPEAR ON CASE AND QUALIFICATION TESTING IS NOT REQUIRED.

1	BCT-10K	
QTY / UNIT	MODEL USED ON	ASS'Y NO.
APPLICATION		
	CODE	

NOTICE TO PERSONS RECEIVING THIS DRAWING
THE TECHNICAL MATERIEL CORPORATION claims proprietary right in the material disclosed hereon. This drawing is issued in confidence for engineering information only and may not be reproduced or used to manufacture anything shown hereon without permission from THE TECHNICAL MATERIEL CORPORATION to the user. This drawing is loaned for mutual assistance and is subject to recall at any time.

UNLESS OTHERWISE SPECIFIED DIMENSIONS ARE IN INCHES AND INCLUDE CHEMICALLY APPLIED OR PLATED FINISHES

DECIMALS .X ± .05 .XX ± .01 .XXX ± .005

FRACTIONS 1/64

TOLS. ANGLES 0° - 30'

MATERIAL SEE SPECS

FINISH SEE SPECS

REQ'D	ITEM	PART NUMBER	DESCRIPTION	SYM.		
F. B. LIST OF MATERIAL						
FINAL APPROVAL		DATE	THE TECHNICAL MATERIEL CORP. MAMARONECK, NEW YORK			
MECH. DES.		DATE				
ELECT. DES.		DATE				
CHECKED		DATE				
DRAWN		DATE	AUTO TRANSFORMER			
		DATE	SIZE	CODE IDENT. NO.	DWG NO.	ISSUE
			B	82679	TF419	B
SCALE			NONE	SHEET		OF