

MARK TMC PART NUMBER
1/8 HIGH GOTHIC WITH LATEST
REVISION LETTER

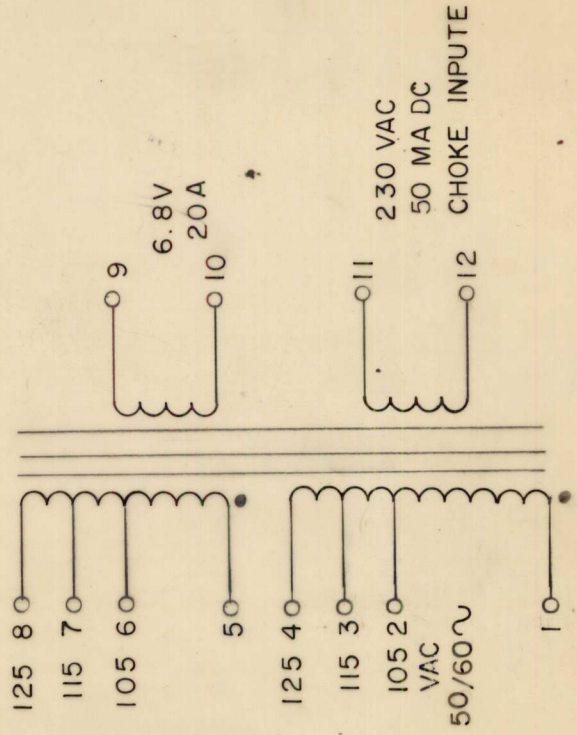
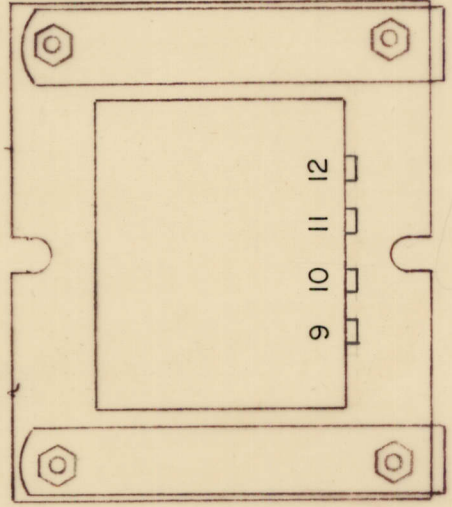
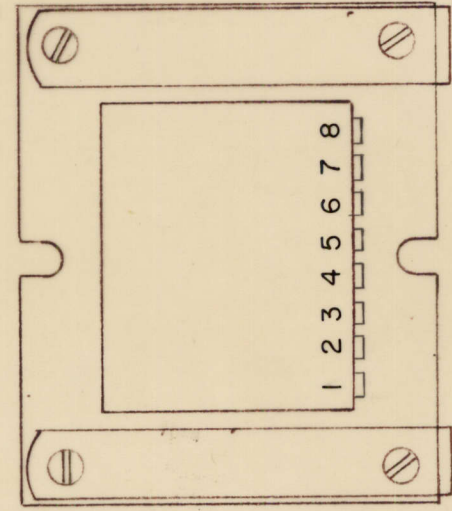
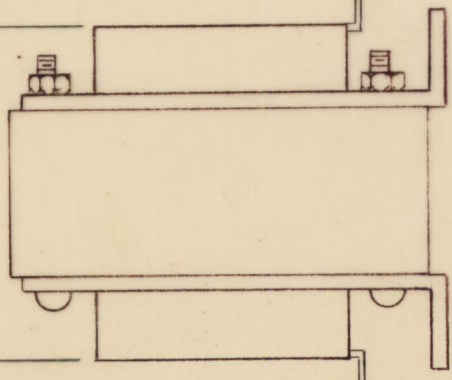
3 7/8 MAX.

3 7/16 MAX.

2 1/16 MAX.

2 13/16 + 1/32

13/64 x 5/16
SLOT (4)



REVISIONS

ZONE	LTR	DESCRIPTION	DATE	E.M.N.NO	DRAFT	CHKD	APPD
	X	EXP RELEASE	8/18/70		GE		
	Ø	ORIGINAL RELEASE	8/19/71		CU		P.E.A.
	A	ADD VAC 50/60 to SCH.	4-26-72	20608	GE	EG	EG

REQ'D	ITEM	PART NUMBER	DESCRIPTION	SYM.
		BUDETTI	LIST OF MATERIAL	
			THE TECHNICAL MATERIEL CORP. MAMARONECK, NEW YORK	
			XFMR, FILA	
			SIZE B	
			CODE IDENT. NO. 82679	
			DWG NO. TF 414	
			ISSUE A	
			SCALE DG 1/8"	
			SHEET 1	

FINAL APPROVAL	DATE	MECH. DES.	DATE	ELECT. DES.	DATE	CHECKED	DATE	DRAWN	DATE
[Signature]	3/26/71	[Signature]	3/26/71	[Signature]	3/26/71	[Signature]	3/26/71	[Signature]	3/26/71

UNLESS OTHERWISE SPECIFIED DIMENSIONS ARE IN INCHES AND INCLUDE CHEMICALLY APPLIED OR PLATED FINISHES	DECIMALS	FRACTIONS
.X ± .05	1/64	
.XX ± .01		ANGLES
.XXX ± .005		0° - 30°

QTY / UNIT	MODEL USED ON	ASSY NO.
1	HFLM-1K	API49

NOTICE TO PERSONS RECEIVING THIS DRAWING
THE TECHNICAL MATERIEL CORPORATION claims proprietary right in the material disclosed hereon. This drawing is issued in confidence for engineering information only and may not be reproduced or used to manufacture anything shown hereon without permission from THE TECHNICAL MATERIEL CORPORATION to the user. This drawing is loaned for mutual assistance and is subject to recall at any time.