

5

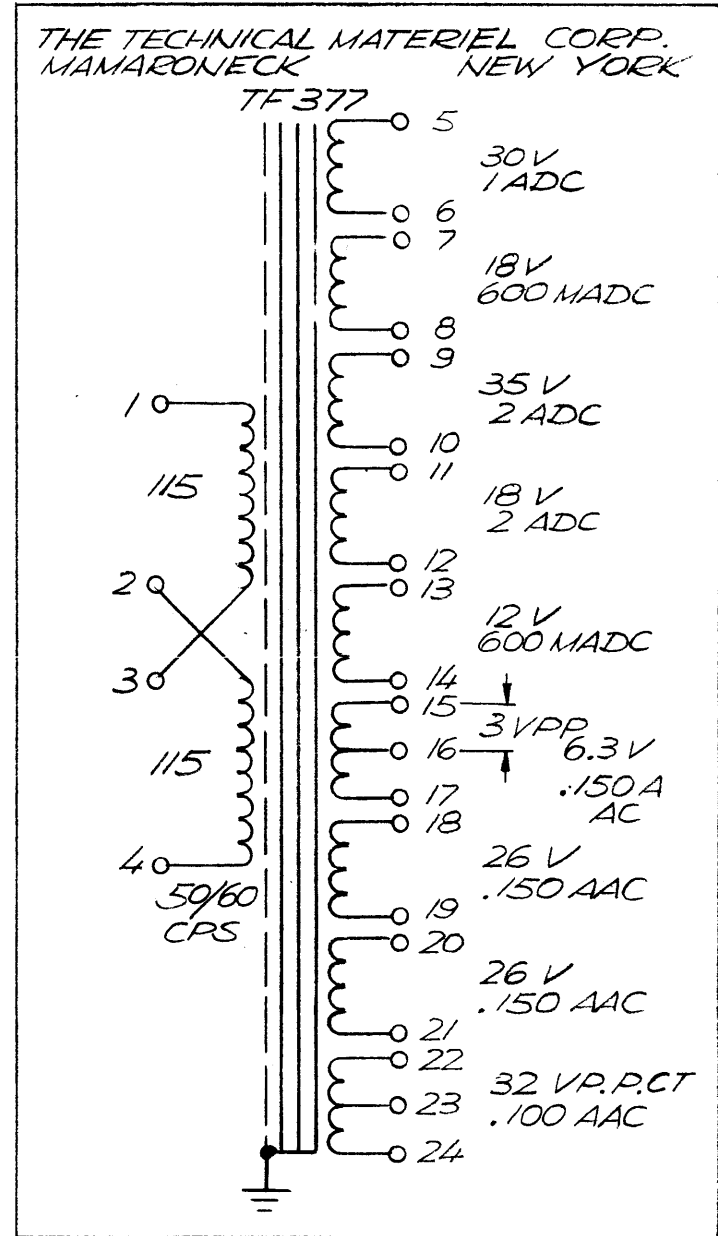
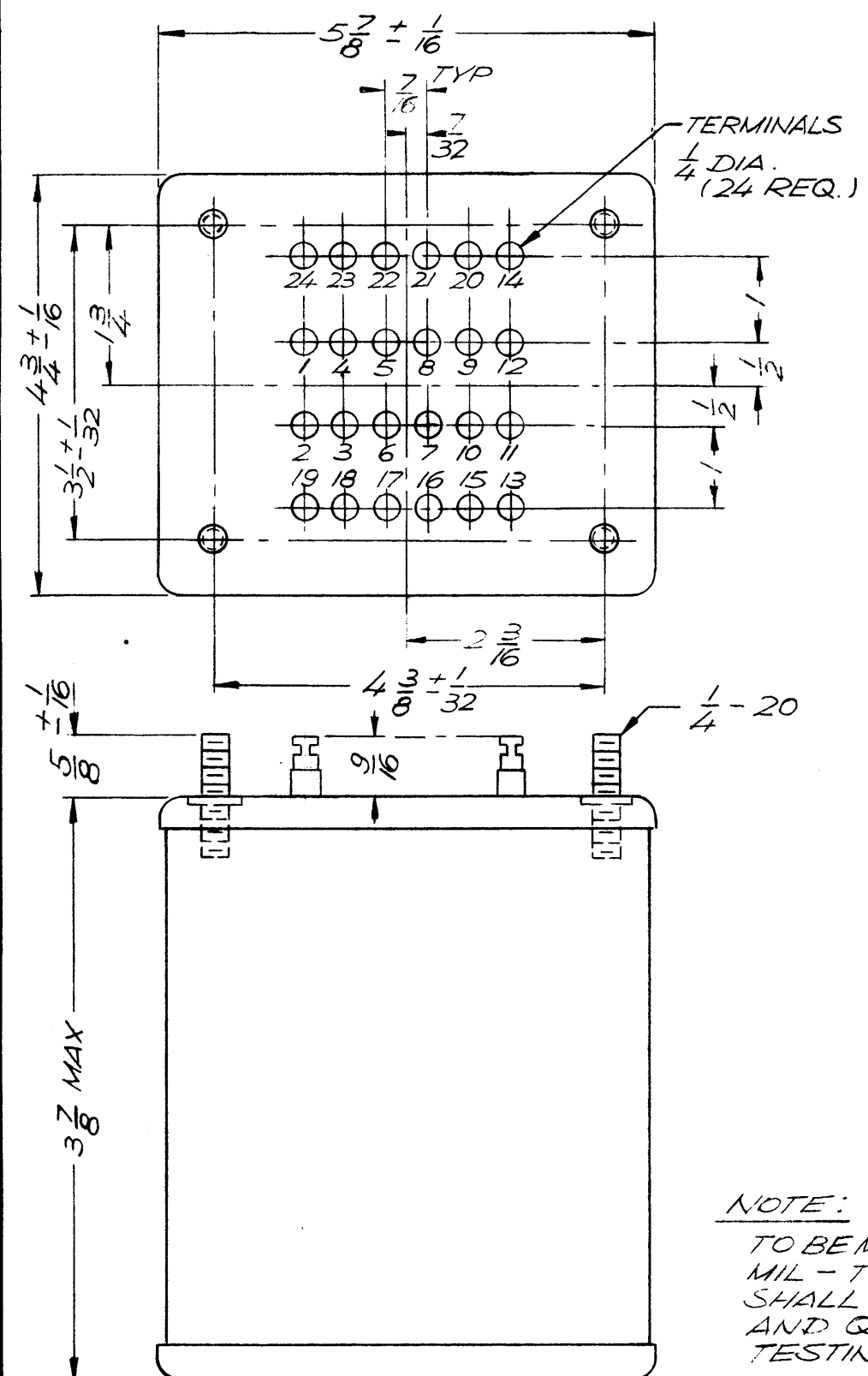
4

3

2

1

REVISIONS						
ZONE	LTR	DESCRIPTION	DATE	E.M.N.NO	DRAFT	CHKD APPD
	X	EXP. RELEASE	11/12/68		K.H.	
	Ø	ORIG. RELEASE FOR PROD.	11.20.68	Ø	R.G.	J.H.



MARKING

**NOTE:**  
 TO BE MANUFACTURED IN ACC/W  
 MIL - T - 27, EXCEPT THAT MIL - T - 27  
 SHALL NOT APPEAR ON CASE  
 AND QUALIFICATION  
 TESTING IS NOT REQUIRED.

**PRIMARY WINDING:**  
 VOLTAGE: 115 / 230  
 FREQUENCY: 50 / 60 Hz  
 PHASE: 1

**SECONDARY WINDING:**  
**FULL LOAD**  
 VOLTAGE: AS SHOWN IN MARKING DETAIL

**NO LOAD**  
 VOLTAGE: TERM. (5-6) 31.2; (7-8) 18.6; (9-10) 36.1;  
 (11-12) 18.6; (13-14) 12.6; (15-16) 1.09;  
 (15-17) 6.55; (18-19) 26.8; (20-21) 26.8;  
 (22-23-24) 24 VCT

**CURRENT:**  
 BREAK DOWN VOLTAGE: 1000

**NOTE: ELECTRO-STATIC SHIELDING TO BE PROVIDED**

**CASE DATA:**  
 HERMETICALLY SEALED  
 CASE TYPE: STEEL  
 CASE DIMENSIONS: SHOWN PICTORALLY

**TERMINAL DATA:**  
 NO. OF TERMINALS: 24  
 TYPE: SOLDER TYPE INSULATED  
 FINISH: SMOOTH GRAY ENAMEL (TMC S115)  
 EXCEPT TERM. END  
 MARKING: ALL TERM. NOS. TO BE METAL STAMPED  
 SCHEMATIC DIAGRAM TO BE MARKED  
 IN BLACK AS PER TMC SPEC, S 727

PLACE MARKING ON THIS END

QTY / UNIT	RTTD - 4	ASS'Y NO.
APPLICATION		
CODE	S401-30(7951)	

**NOTICE TO PERSONS RECEIVING THIS DRAWING**  
 THE TECHNICAL MATERIEL CORPORATION claims proprietary right in the material disclosed hereon. This drawing is issued in confidence for engineering information only and may not be reproduced or used to manufacture anything shown hereon without permission from THE TECHNICAL MATERIEL CORPORATION to the user. This drawing is loaned for mutual assistance and is subject to recall at any time.

DECIMALS X ± .05 .XX ± .01 .XXX ± .005	FRACTIONS 1/64 ANGLES 0° .30'	TOLS.
MATERIAL		
FINISH		

REQ'D	ITEM	PART NUMBER	DESCRIPTION	SYM.
S. De MARCO LIST OF MATERIAL				
THE TECHNICAL MATERIEL CORP. MAMARONECK, NEW YORK				
TRANSFORMER, POWER, STEP-DOWN				
SIZE	CODE IDENT. NO.	DWG NO.	ISSUE	
B	82679	TF 377	Ø	
SCALE			SHEET OF	

5

4

3

2

1