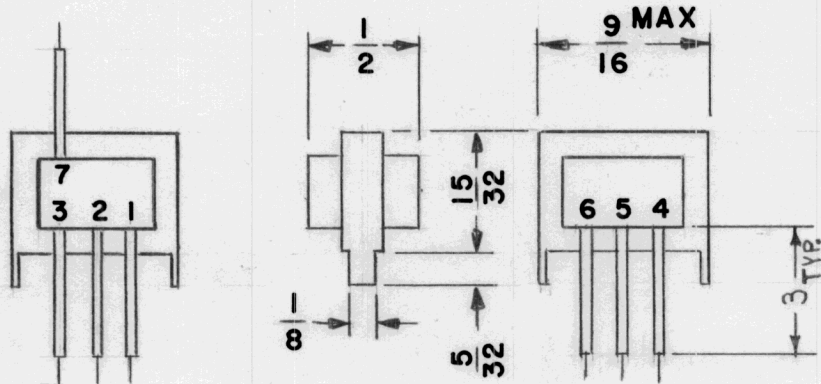


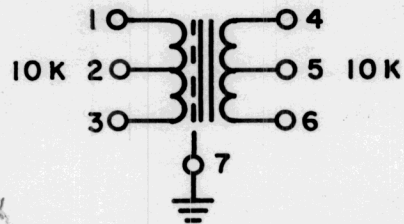
REQ. PER UNIT	USED ON			TF 350	∅
	MODEL	ASS'Y. NO.	DATE		
1	TF 351	A4498	8-26-66		

SPECIFICATIONS

1. INPUT IMP. : 10K CT
2. OUTPUT IMP. : 10K CT  
FOR USE WITH A 600 Ω LINE, OUTPUT LOAD.
3. ZERO DB REF. 1VRMS.
4. INSERTION LOSS : 4.3 dB MAX.
5. RESPONSE 300 TO 3500 CPS : ± 2DB MAX.
6. DC RES. - PRI. 450 Ω  
SEC. 570 Ω
7. CASE TYPE : OPEN FRAME
8. MARKING : LEADS NUMBERED AS SHOWN,  
TMC P/N STAMPED, LOCATION OPTIONAL.



SCHEMATIC DIAGRAM



REQ.	ITEM	PART NO.	DESCRIPTION	SYMBOL
			POSE	
STOCK SIZE			THE TECHNICAL MATERIEL CORP. MAMARONECK. NEW YORK	
			TRANSFORMER, ISOLATION	
MATERIAL				
UNLESS OTHERWISE SPECIFIED DIMENSIONS ARE IN INCHES AND INCLUDE CHEMICALLY APPLIED OR PLATED FINISHES			SCALE	
DECIMALS .X ± .05 .XX ± .01 .XXX ± .005			FRACTIONS ± 1/64 ANGLES, ± 0° 30'	
TOLERANCES			CODE	
			S401-30 (7307)	
FINISH & SPEC. NO.			ELEC. DES. APP. MECH. DES. APP.	
			TF 350 ∅	