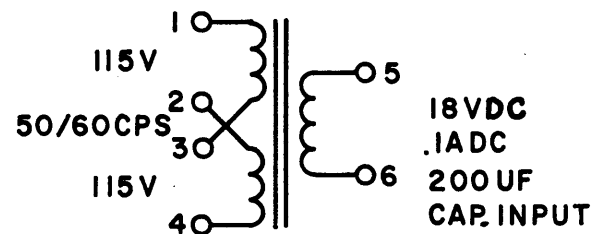
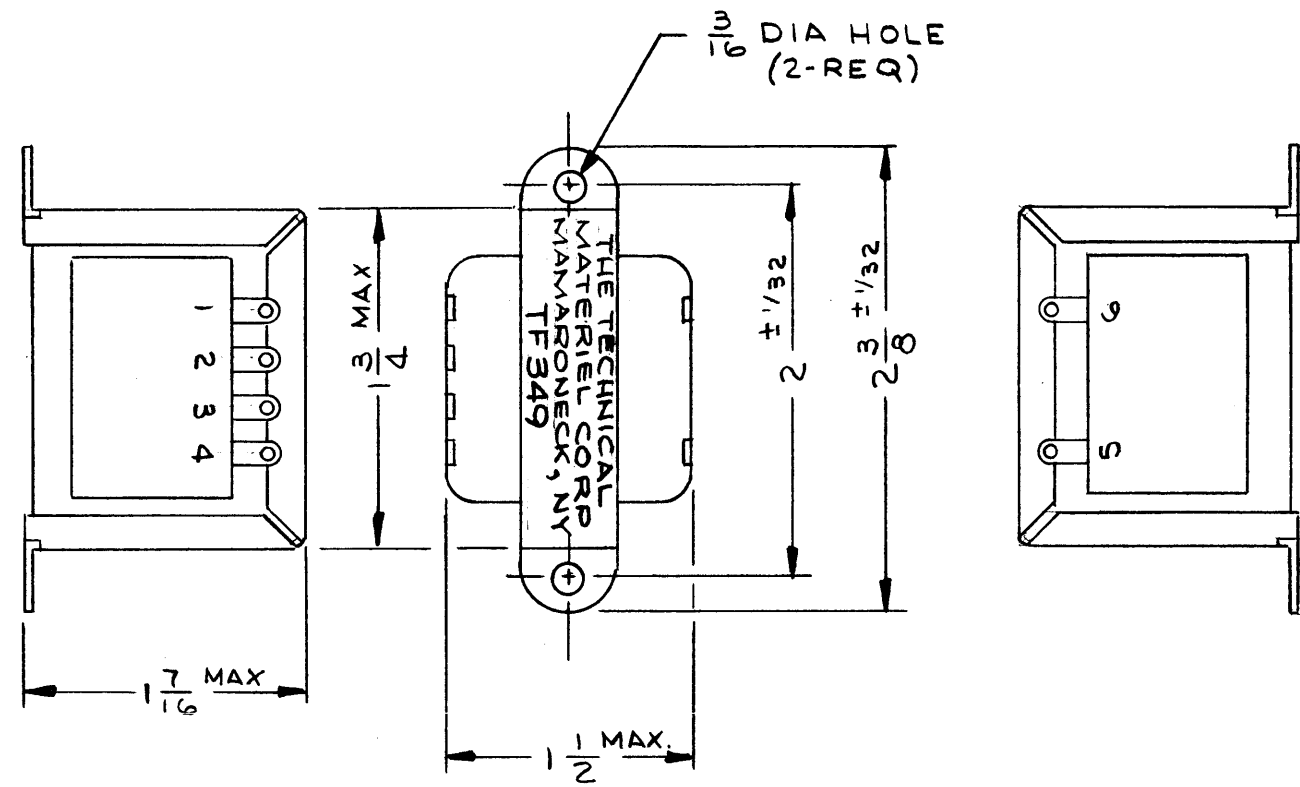


STANDARD DRAWING

TF 349 A



SCHMATIC

REVISIONS						
SYM	DESCRIPTION	DATE	E.M.N. NO.	DRAFT	CHKD	APPD
X	EXP. RELEASE	11/17/66		JL	JL	
Ø	ORIGINAL RELEASE FOR PRODUCTION	12/2/66	Ø	CV		
A	MFG NOTE DEL ; FINISH & MARKING SPECS REVISED.	7.25.67	18398	GW		EFM

SPECIFICATIONS

TRANSFORMER POWER:

PRIMARY WINDING:

VOLTAGE: 115/230 V AC
 FREQUENCY: 50/60 CPS
 PHASE: 1

SECONDARY WINDING:

FULL LOAD:
 VOLTAGE RMS: TERM 5&6 15.7 VOLTS RMS, 18 VDC
 CURRENT: .1A DC
 NO LOAD:
 VOLTAGE RMS: 18.4 V
 CURRENT (RMS): 0.1 ADC

DC SPECS IF ANY: (INCLUDE TYPE OF POWER SUPPLY): DC RATINGS SPECIFIED FOR BRIDGE RECTIFIER WITH 200 uF CAP. INPUT

BREAKDOWN VOLTAGE:

CASE DATA:

HERMETICALLY SEALED: NO
 CASE TYPE: OPEN FRAME
 CASE DIMENSIONS: SHOWN PICTORIALY

MOUNTING DATA: SHOWN PICTORIALY

TERMINAL DATA:

NO OF TERM: 6
 TYPE: SOLDER LUG

FINISH:

CADMIUM FINISH, CLEAR VARNISH

MARKING:

TERMINAL NUMBERS AND TMC IDENTIFICATION TO BE MARKED, LOCATION OF TMC IDENTIFICATION AS SHOWN MARKING TO BE PER TMC SPECS S566 AND S727

REQ'D.	ITEM	PART NUMBER	DESCRIPTION	SYMBOL
LIST OF MATERIAL				
MATERIAL		THE TECHNICAL MATERIEL CORP. MAMARONECK, NEW YORK		
FINISH		TITLE TRANSFORMER, POWER-STEP-DOWN		
UNLESS OTHERWISE SPECIFIED DIMENSIONS ARE IN INCHES AND INCLUDE CHEMICALLY APPLIED OR PLATED FINISHES		DRAWN J.L.	DATE 10-17-66	FINAL APPROVAL <i>[Signature]</i>
		CHECKED <i>[Signature]</i>	DATE 11/29/66	DATE 12/1/66
		ELECT. DES. <i>[Signature]</i>	DATE 12/1/66	REV. LTR. A
		MECH. DES.	DATE	SHEET

Q'TY./UNIT	MODEL USED ON	ASS'Y. NO.
SCALE	CODE	S401-30(7452)

THE CONTENTS OF THIS DRAWING ARE THE EXCLUSIVE PROPERTY OF THE TECHNICAL MATERIEL CORP. ITS UNAUTHORIZED USE OR REPRODUCTION IN WHOLE OR IN PART IS STRICTLY FORBIDDEN.

NOTES