

APPLICATION

QTY	MODEL USED ON	ASS'Y NO.	LTR
	AK101A		X
	AK102A		Ø

REVISIONS

DESCRIPTION	DATE	E.M.N.NO	DRAFT	CHKD	AP.
EXPERIMENTAL RELEASE	9/30/69		C.V.		
ORIG. RELEASE FOR PROD.	2/28/69		RG		

SPECIFICATIONS

IMPEDANCE

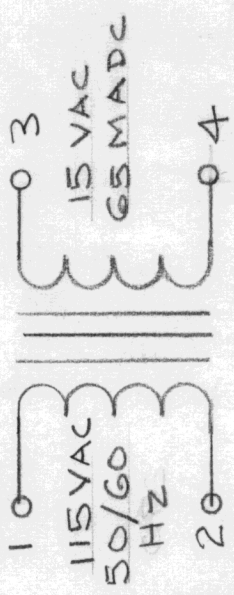
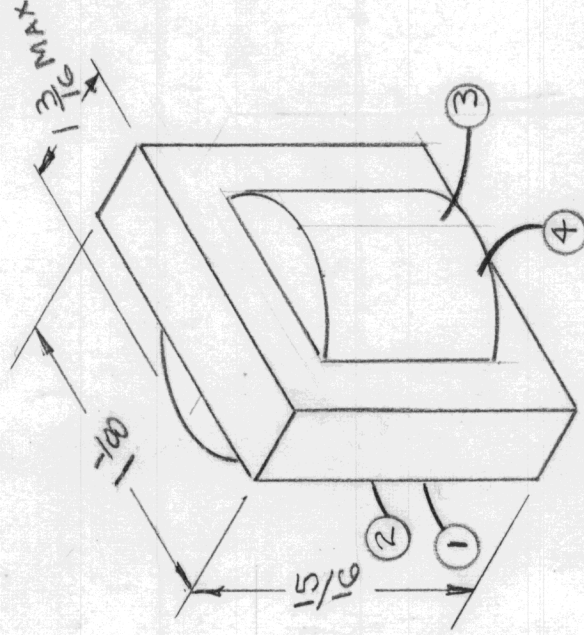
PRIMARY: 115 VAC
 SECONDARY: 115 VAC @65 MADC
 FREQ. RANGE: 50/60 Hz

CASE DATA:

TYPE: CHANNEL FRAME
 MATERIAL: STEEL
 FINISH: CADMIUM PLATED

TERMINAL DATA:

4 WIRE LEADS



UNLESS OTHERWISE SPECIFIED DIMENSIONS ARE IN INCHES AND INCLUDE CHEMICALLY APPLIED OR PLATED FINISHES

DECIMALS 1/64
 .X ± .05 TOLS. ANGLES
 .XX ± .01 0° - 30'
 .XXX ± .005

MATERIAL

FINISH

S401-30(1552)

REQ'D ITEM PART NUMBER

F. BUDETTI

DESCRIPTION

LIST OF MATERIAL

SYM.

FINAL APPROVALS	DATE
<i>[Signature]</i>	2/30/69
MECH. DES.	DATE
<i>[Signature]</i>	
ELECT. DES.	DATE
<i>[Signature]</i>	2/27/69
CHECKED	DATE
<i>[Signature]</i>	
DRAWN	DATE
<i>[Signature]</i>	2/26/69

THE TECHNICAL MATERIEL CORP.

MAMARONECK, NEW YORK

TRANSFORMER, STEP-DOWN

NOTICE TO PERSONS RECEIVING THIS DRAWING
 THE TECHNICAL MATERIEL CORPORATION claims proprietary right in the material disclosed hereon. This drawing is issued in confidence for engineering information only and may not be reproduced or used to manufacture anything shown hereon without permission from THE TECHNICAL MATERIEL CORPORATION to the user. This drawing is loaned for mutual assistance and is subject to recall at any time.

SIZE CODE IDENT. NO. DWG NO.

A 82679

TF 348

ISSUE

Ø

SCALE

SHEET

OF